

## Product datasheet for **TA802776M**

### beta 2 Microglobulin (B2M) Mouse Monoclonal Antibody [Clone ID: OTI1A9]

#### Product data:

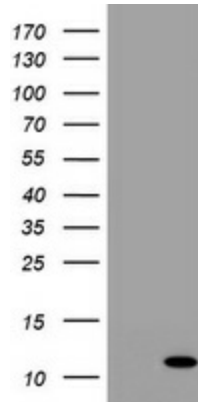
|                         |   |
|-------------------------|---|
| Product Type:           | Primary Antibodies  |
| Clone Name:             | OTI1A9  |
| Applications:           | ELISA, IHC, WB  |
| Recommended Dilution:   | WB 1:2000, IHC 1:150  |
| Reactivity:             | Human   |
| Host:                   | Mouse   |
| Isotype:                | IgG1  |
| Clonality:              | Monoclonal  |
| Immunogen:              | Purified native Human beta 2 Microglobulin protein  |
| Formulation:            | PBS (pH 7.3) containing 1% BSA, 50% glycerol and 0.02% sodium azide.  |
| Concentration:          | 1 mg/ml   |
| Purification:           | Purified from mouse ascites fluids or tissue culture supernatant by affinity chromatography (protein A/G)   |
| Conjugation:            | Unconjugated  |
| Storage:                | Store at -20°C as received.   |
| Stability:              | Stable for 12 months from date of receipt.  |
| Predicted Protein Size: | 11.7 kDa  |
| Gene Name:              | beta-2-microglobulin  |
| Database Link:          | <a href="#">NP_004039</a><br><a href="#">Entrez Gene 567 Human</a><br><a href="#">P61769</a>  |
| Background:             | This gene encodes a serum protein found in association with the major histocompatibility complex (MHC) class I heavy chain on the surface of nearly all nucleated cells. The protein has a predominantly beta-pleated sheet structure that can form amyloid fibrils in some pathological conditions. A mutation in this gene has been shown to result in hypercatabolic hypoproteinemia. [provided by RefSeq, Sep 2009] |
| Synonyms:               | IMD43   |

[View online »](#)

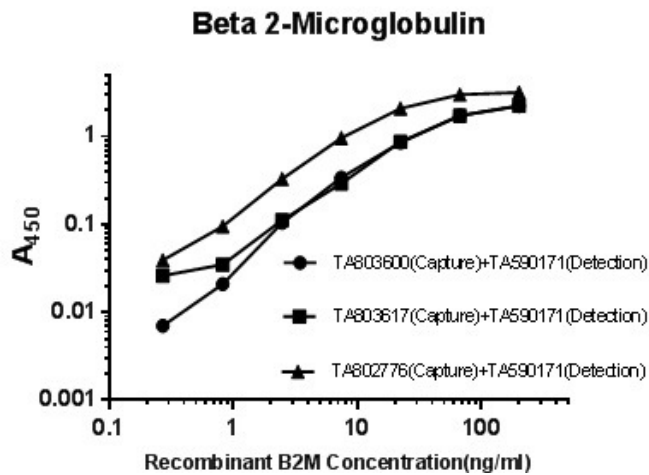
**Protein Families:** Druggable Genome, Secreted Protein

**Protein Pathways:** Antigen processing and presentation

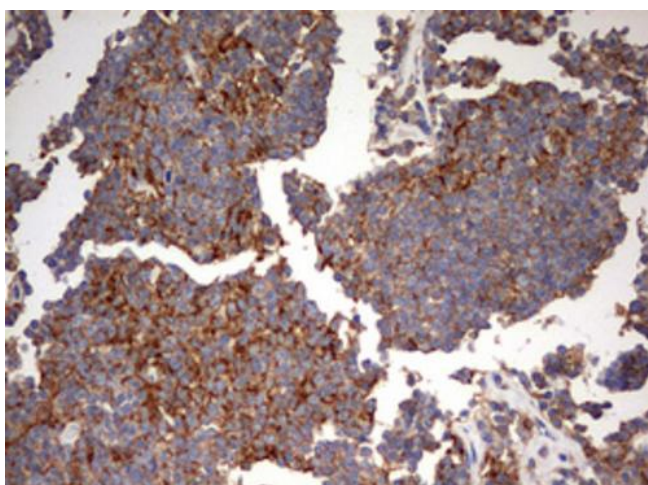
**Product images:**



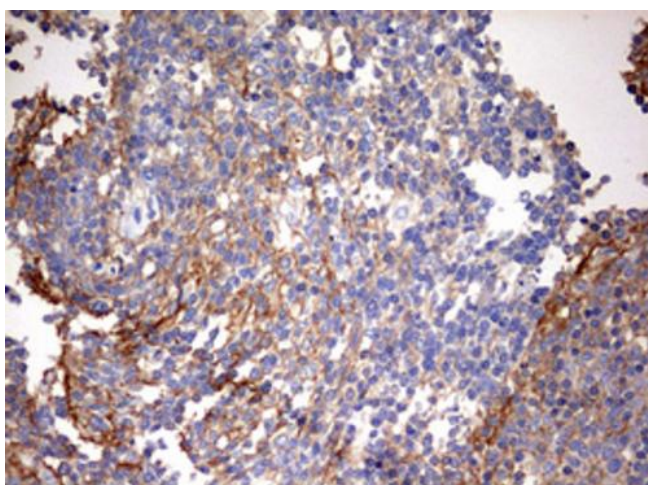
HEK293T cells were transfected with the pCMV6-ENTRY control (Left lane) or pCMV6-ENTRY B2M ([RC207587], Right lane) cDNA for 48 hrs and lysed. Equivalent amounts of cell lysates (5 ug per lane) were separated by SDS-PAGE and immunoblotted with anti-B2M. Positive lysates [LY401311] (100ug) and [LC401311] (20ug) can be purchased separately from OriGene.



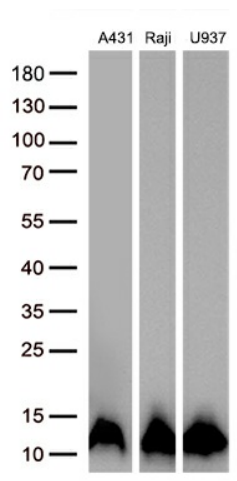
Standard curve for ELISA analysis with B2M recombinant protein (dilution range from 0.3ng/ml to 200ng/ml) using B2M Capture Antibody (Cat# [TA803600]/[TA803617]/[TA802776]) at 5ug/ml and HRP conjugated B2M Detection mAb (Cat# [TA590171]) at 0.125ug/ml.



Immunohistochemical staining of paraffin-embedded Human lymphoma tissue using anti-B2M mouse monoclonal antibody. Heat-induced epitope retrieval by EDTA solution buffer pH 8.0 at 120°C for 3 min.



Immunohistochemical staining of paraffin-embedded Human tonsil within the normal limits using anti-B2M mouse monoclonal antibody. Heat-induced epitope retrieval by EDTA solution buffer pH 8.0 at 120°C for 3 min.



Western blot analysis of extracts (30ug per lane) from 3 different cell lines lysates by using anti-B2M antibody ([TA802776], 1:1000; 1 mg/ml).