

## Product datasheet for **TA802776**

### beta 2 Microglobulin (B2M) Mouse Monoclonal Antibody [Clone ID: OTI1A9]

#### Product data:

Product Type:	Primary Antibodies
Clone Name:	OTI1A9
Applications:	ELISA, IHC, WB
Recommended Dilution:	WB 1:2000, IHC 1:150
Reactivity:	Human
Host:	Mouse
Isotype:	IgG1
Clonality:	Monoclonal
Immunogen:	Purified native Human beta 2 Microglobulin protein
Formulation:	PBS (pH 7.3) containing 1% BSA, 50% glycerol and 0.02% sodium azide.
Concentration:	1 mg/ml
Purification:	Purified from mouse ascites fluids or tissue culture supernatant by affinity chromatography (protein A/G)
Conjugation:	Unconjugated
Storage:	Store at -20°C as received.
Stability:	Stable for 12 months from date of receipt.
Predicted Protein Size:	11.7 kDa
Gene Name:	beta-2-microglobulin
Database Link:	<a href="#">NP_004039</a> <a href="#">Entrez Gene 567 Human</a> <a href="#">P61769</a>
Background:	This gene encodes a serum protein found in association with the major histocompatibility complex (MHC) class I heavy chain on the surface of nearly all nucleated cells. The protein has a predominantly beta-pleated sheet structure that can form amyloid fibrils in some pathological conditions. A mutation in this gene has been shown to result in hypercatabolic hypoproteinemia. [provided by RefSeq, Sep 2009]
Synonyms:	IMD43

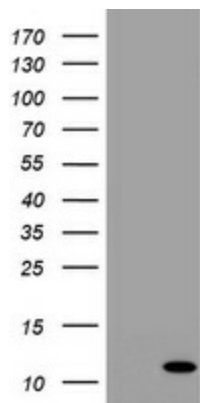


[View online »](#)

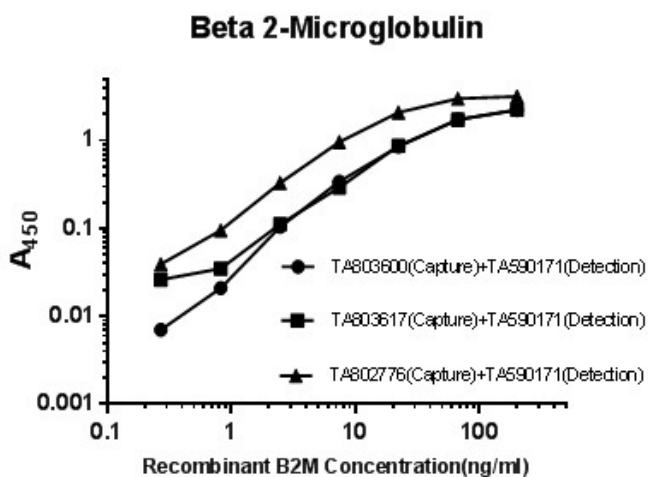
**Protein Families:** Druggable Genome, Secreted Protein

**Protein Pathways:** Antigen processing and presentation

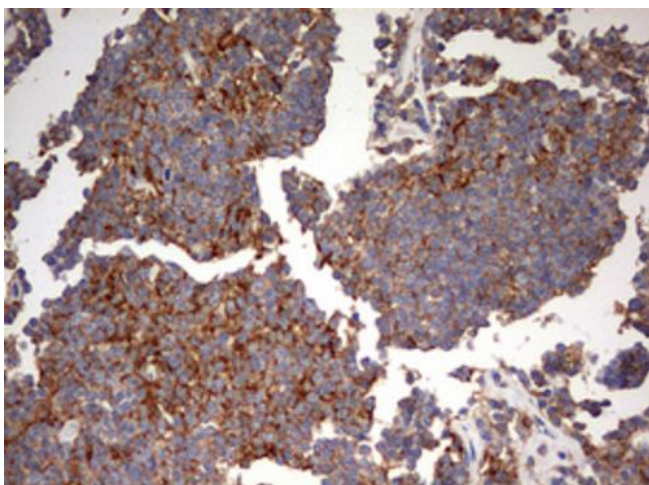
**Product images:**



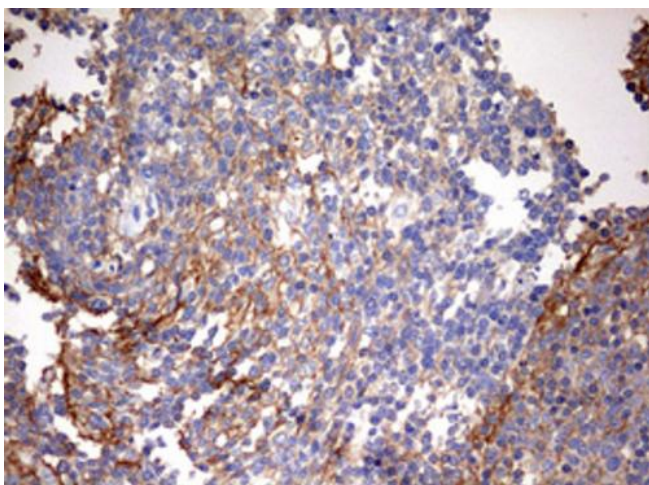
HEK293T cells were transfected with the pCMV6-ENTRY control (Left lane) or pCMV6-ENTRY B2M ([RC207587], Right lane) cDNA for 48 hrs and lysed. Equivalent amounts of cell lysates (5 ug per lane) were separated by SDS-PAGE and immunoblotted with anti-B2M. Positive lysates [LY401311] (100ug) and [LC401311] (20ug) can be purchased separately from OriGene.



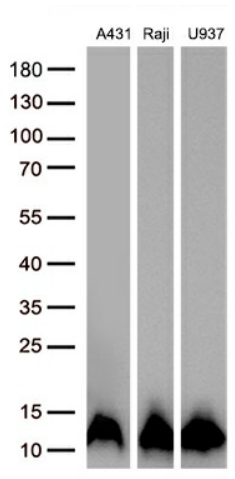
Standard curve for ELISA analysis with B2M recombinant protein (dilution range from 0.3ng/ml to 200ng/ml) using B2M Capture Antibody (Cat# [TA803600]/[TA803617]/TA802776) at 5ug/ml and HRP conjugated B2M Detection mAb (Cat# [TA590171]) at 0.125ug/ml.



Immunohistochemical staining of paraffin-embedded Human lymphoma tissue using anti-B2M mouse monoclonal antibody. Heat-induced epitope retrieval by EDTA solution buffer pH 8.0 at 120°C for 3 min.



Immunohistochemical staining of paraffin-embedded Human tonsil within the normal limits using anti-B2M mouse monoclonal antibody. Heat-induced epitope retrieval by EDTA solution buffer pH 8.0 at 120°C for 3 min.



Western blot analysis of extracts (30ug per lane) from 3 different cell lines lysates by using anti-B2M antibody (TA802776, 1:1000; 1mg/ml).