

## Product datasheet for **TA802723S**

### ART1 Mouse Monoclonal Antibody [Clone ID: OTI6E2]

#### Product data:

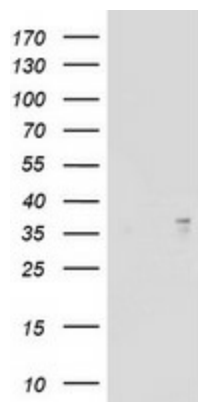
Product Type:	Primary Antibodies
Clone Name:	OTI6E2
Applications:	WB
Recommended Dilution:	WB 1:2000
Reactivity:	Human
Host:	Mouse
Isotype:	IgG2b
Clonality:	Monoclonal
Immunogen:	Human recombinant protein fragment corresponding to amino acids 83-295 of human ART1 (NP_004305) produced in E.coli.
Formulation:	PBS (pH 7.3) containing 1% BSA, 50% glycerol and 0.02% sodium azide.
Concentration:	1 mg/ml
Purification:	Purified from mouse ascites fluids or tissue culture supernatant by affinity chromatography (protein A/G)
Conjugation:	Unconjugated
Storage:	Store at -20°C as received.
Stability:	Stable for 12 months from date of receipt.
Predicted Protein Size:	36.2 kDa
Gene Name:	ADP-ribosyltransferase 1
Database Link:	<a href="#">NP_004305</a> <a href="#">Entrez Gene 417 Human</a> <a href="#">P52961</a>
Background:	ADP-ribosyltransferase catalyzes the ADP-ribosylation of arginine residues in proteins. Mono-ADP-ribosylation is a posttranslational modification of proteins that is interfered with by a variety of bacterial toxins including cholera, pertussis, and heat-labile enterotoxins of E. coli. The amino acid sequence consists of predominantly hydrophobic N- and C-terminal regions, which is characteristic of glycosylphosphatidylinositol (GPI)-anchored proteins. This gene was previously designated ART2. [provided by RefSeq, Jul 2008]



[View online »](#)

Synonyms: ART2; ARTC1; CD296; RT6

### Product images:



HEK293T cells were transfected with the pCMV6-ENTRY control (Cat# [PS100001], Left lane) or pCMV6-ENTRY ART1 (Cat# [RC220129], Right lane) cDNA for 48 hrs and lysed. Equivalent amounts of cell lysates (5 ug per lane) were separated by SDS-PAGE and immunoblotted with anti-ART1 (Cat# [TA802723]). Positive lysates [LY418071] (100ug) and [LC418071] (20ug) can be purchased separately from OriGene.