

## Product datasheet for **TA802668BM**

### **PARN Mouse Monoclonal Antibody (HRP conjugated) [Clone ID: OTI4D12]**

#### **Product data:**

Product Type:	Primary Antibodies
Clone Name:	OTI4D12
Applications:	IHC, WB
Recommended Dilution:	WB 1:2000, IHC 1:150
Reactivity:	Human, Mouse, Rat
Host:	Mouse
Isotype:	IgG2a
Clonality:	Monoclonal
Immunogen:	Human recombinant protein fragment corresponding to amino acids 1-266 of human PARN (NP_002573) produced in E.coli.
Formulation:	PBS (pH 7.3) containing 1% BSA, 50% glycerol.
Concentration:	0.5 mg/ml
Purification:	Purified from mouse ascites fluids or tissue culture supernatant by affinity chromatography (protein A/G)
Conjugation:	HRP
Storage:	Store at -20°C as received.
Stability:	Stable for 12 months from date of receipt.
Predicted Protein Size:	73.3 kDa
Gene Name:	poly(A)-specific ribonuclease
Database Link:	<a href="#">NP_002573</a> <a href="#">Entrez Gene 74108 Mouse</a> <a href="#">Entrez Gene 5073 Human</a> <a href="#">O95453</a>



[View online »](#)

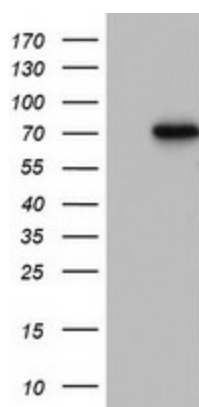
**Background:** The protein encoded by this gene is a 3'-exoribonuclease, with similarity to the RNase D family of 3'-exonucleases. It prefers poly(A) as the substrate, hence, efficiently degrades poly(A) tails of mRNAs. Exonucleolytic degradation of the poly(A) tail is often the first step in the decay of eukaryotic mRNAs. This protein is also involved in silencing of certain maternal mRNAs during oocyte maturation and early embryonic development, as well as in nonsense-mediated decay (NMD) of mRNAs that contain premature stop codons. Alternatively spliced transcript variants encoding different isoforms have been found for this gene. [provided by RefSeq, Aug 2008]

**Synonyms:** DAN

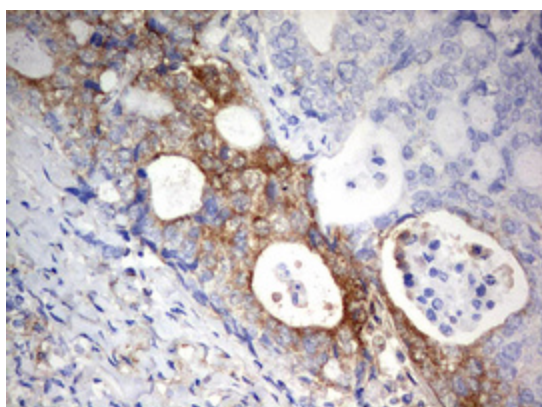
**Protein Families:** Transcription Factors

**Protein Pathways:** RNA degradation

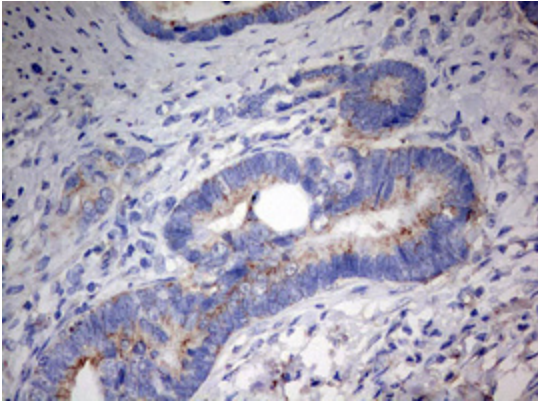
### Product images:



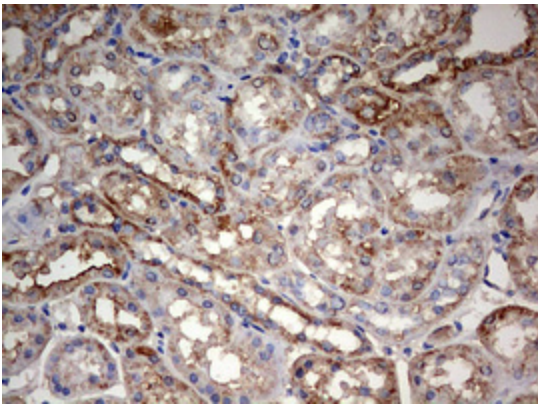
HEK293T cells were transfected with the pCMV6-ENTRY control (Cat# [PS100001], Left lane) or pCMV6-ENTRY PARN (Cat# [RC207220], Right lane) cDNA for 48 hrs and lysed. Equivalent amounts of cell lysates (5 ug per lane) were separated by SDS-PAGE and immunoblotted with anti-PARN (Cat# [TA802668]). Positive lysates [LY419233] (100ug) and [LC419233] (20ug) can be purchased separately from OriGene.



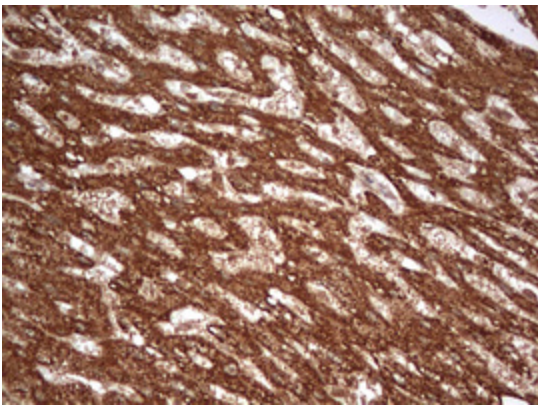
Immunohistochemical staining of paraffin-embedded Adenocarcinoma of Human breast tissue using anti-PARN mouse monoclonal antibody. (Heat-induced epitope retrieval by 10mM citric buffer, pH6.0, 120°C for 3min, [TA802668])



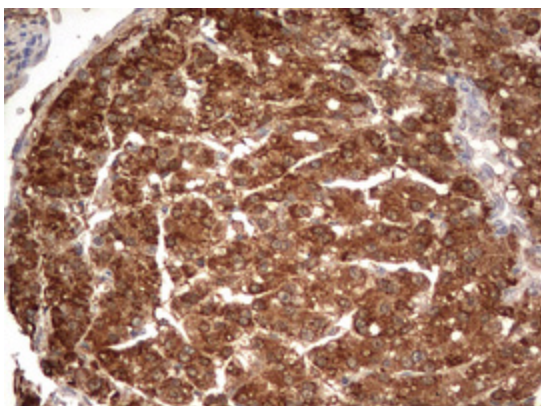
Immunohistochemical staining of paraffin-embedded Adenocarcinoma of Human colon tissue using anti-PARN mouse monoclonal antibody. (Heat-induced epitope retrieval by 10mM citric buffer, pH6.0, 120°C for 3min, [TA802668])



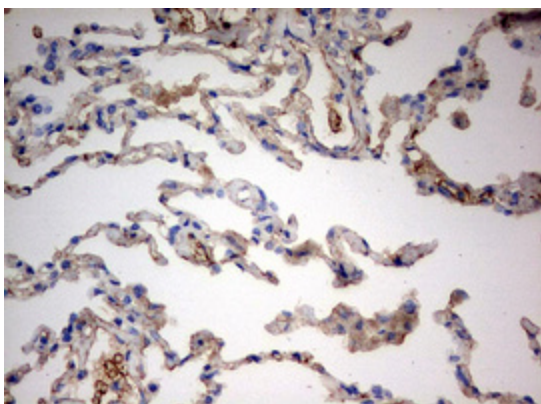
Immunohistochemical staining of paraffin-embedded Human Kidney tissue within the normal limits using anti-PARN mouse monoclonal antibody. (Heat-induced epitope retrieval by 10mM citric buffer, pH6.0, 120°C for 3min, [TA802668])



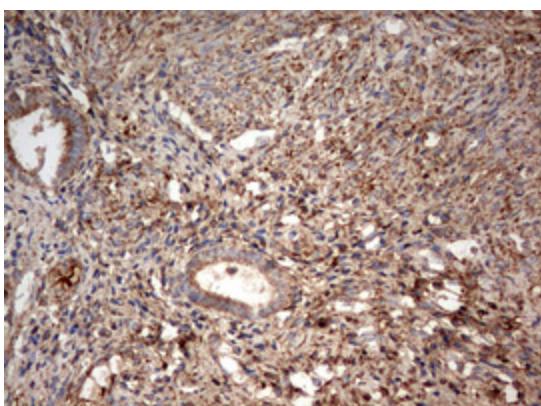
Immunohistochemical staining of paraffin-embedded Human liver tissue within the normal limits using anti-PARN mouse monoclonal antibody. (Heat-induced epitope retrieval by 10mM citric buffer, pH6.0, 120°C for 3min, [TA802668])



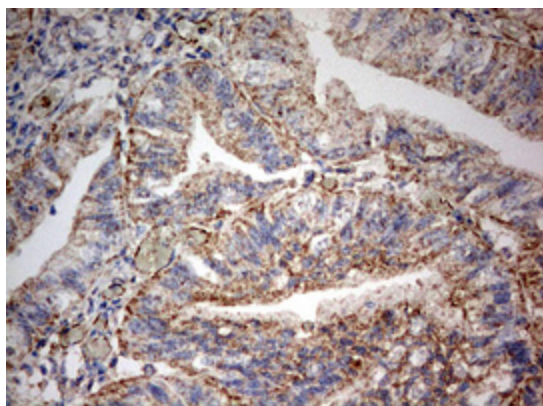
Immunohistochemical staining of paraffin-embedded Carcinoma of Human liver tissue using anti-PARN mouse monoclonal antibody. (Heat-induced epitope retrieval by 10mM citric buffer, pH6.0, 120°C for 3min, [TA802668])



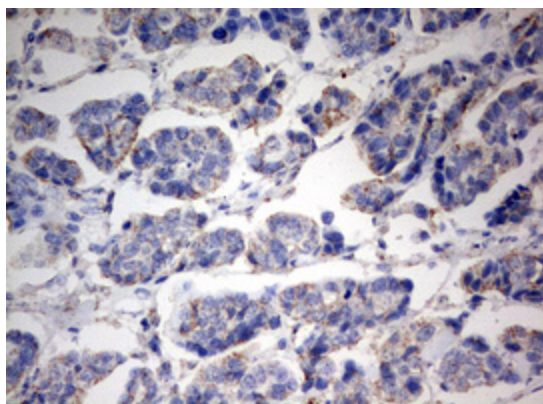
Immunohistochemical staining of paraffin-embedded Human lung tissue within the normal limits using anti-PARN mouse monoclonal antibody. (Heat-induced epitope retrieval by 10mM citric buffer, pH6.0, 120°C for 3min, [TA802668])



Immunohistochemical staining of paraffin-embedded Human endometrium tissue within the normal limits using anti-PARN mouse monoclonal antibody. (Heat-induced epitope retrieval by 10mM citric buffer, pH6.0, 120°C for 3min, [TA802668])



Immunohistochemical staining of paraffin-embedded Adenocarcinoma of Human endometrium tissue using anti-PARN mouse monoclonal antibody. (Heat-induced epitope retrieval by 10mM citric buffer, pH6.0, 120°C for 3min, [TA802668])



Immunohistochemical staining of paraffin-embedded Carcinoma of Human bladder tissue using anti-PARN mouse monoclonal antibody. (Heat-induced epitope retrieval by 10mM citric buffer, pH6.0, 120°C for 3min, [TA802668])