

Product datasheet for **TA802667S**

CDX2 Mouse Monoclonal Antibody [Clone ID: OTI3B1]

Product data:

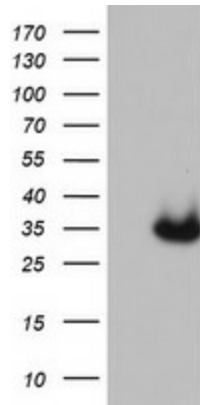
Product Type:	Primary Antibodies
Clone Name:	OTI3B1
Applications:	IHC, WB
Recommended Dilution:	WB 1:2000, IHC 1:150
Reactivity:	Human, Mouse, Rat
Host:	Mouse
Isotype:	IgG1
Clonality:	Monoclonal
Immunogen:	Full length human recombinant protein of human CDX2 (NP_001256) produced in E.coli.
Formulation:	PBS (pH 7.3) containing 1% BSA, 50% glycerol and 0.02% sodium azide.
Concentration:	1 mg/ml
Purification:	Purified from mouse ascites fluids or tissue culture supernatant by affinity chromatography (protein A/G)
Conjugation:	Unconjugated
Storage:	Store at -20°C as received.
Stability:	Stable for 12 months from date of receipt.
Predicted Protein Size:	33.3 kDa
Gene Name:	caudal type homeobox 2
Database Link:	NP_001256 Entrez Gene 12591 Mouse Entrez Gene 66019 Rat Entrez Gene 1045 Human Q99626
Background:	This gene is a member of the caudal-related homeobox transcription factor gene family. The encoded protein is a major regulator of intestine-specific genes involved in cell growth and differentiation. This protein also plays a role in early embryonic development of the intestinal tract. Aberrant expression of this gene is associated with intestinal inflammation and tumorigenesis. [provided by RefSeq, Jan 2012]
Synonyms:	CDX-3; CDX2/AS; CDX3



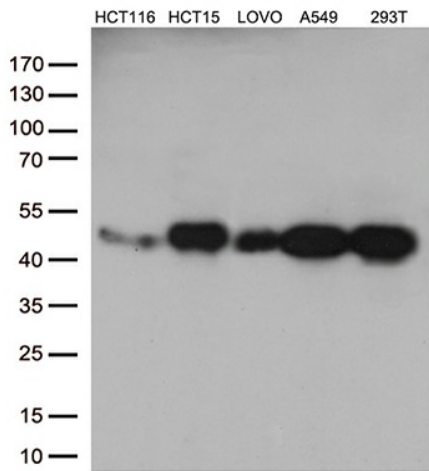
[View online »](#)

Protein Families: Adult stem cells, Druggable Genome, Embryonic stem cells, ES Cell Differentiation/IPS, Transcription Factors

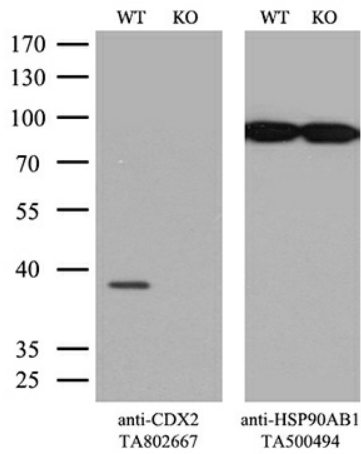
Product images:



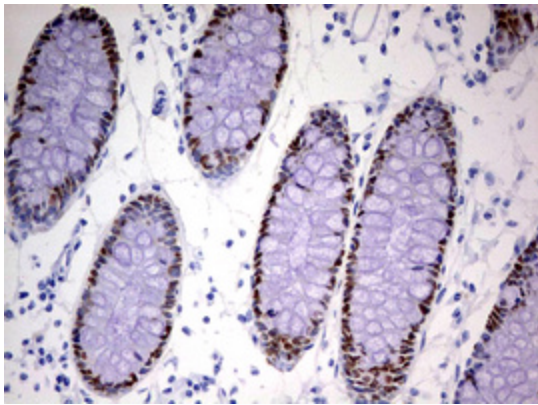
HEK293T cells were transfected with the pCMV6-ENTRY control (Left lane) or pCMV6-ENTRY CDX2 ([RC204883], Right lane) cDNA for 48 hrs and lysed. Equivalent amounts of cell lysates (5 ug per lane) were separated by SDS-PAGE and immunoblotted with anti-CDX2. Positive lysates [LY420044] (100ug) and [LC420044] (20ug) can be purchased separately from OriGene.



Western blot analysis of extracts (35ug) from 5 different cell lines by using anti-MGMT monoclonal antibody (1:500).



Equivalent amounts of cell lysates (10 ug per lane) of wild-type 293T cells (WT, Cat# LC810293T) and CDX2-Knockout 293T cells (KO, Cat# [LC810043]) were separated by SDS-PAGE and immunoblotted with anti-CDX2 monoclonal antibody [TA802667]. Then the blotted membrane was stripped and reprobed with anti-b-actin antibody ([TA811000]) as a loading control (1:500).



Immunohistochemical staining of paraffin-embedded Human colon tissue within the normal limits using anti-CDX2 mouse monoclonal antibody. (Heat-induced epitope retrieval by 10mM citric buffer, pH6.0, 120°C for 3min, [TA802667]) (1:150)