

## Product datasheet for **TA802664AM**

### Cytokeratin 20 (KRT20) Mouse Monoclonal Antibody (Biotin conjugated) [Clone ID: OTI5F1]

#### Product data:

Product Type:	Primary Antibodies
Clone Name:	OTI5F1
Applications:	WB
Recommended Dilution:	WB 1:2000
Reactivity:	Human
Host:	Mouse
Isotype:	IgG2a
Clonality:	Monoclonal
Immunogen:	Full length human recombinant protein of human KRT20 (NP_061883) produced in E.coli.
Formulation:	PBS (pH 7.3) containing 1% BSA, 50% glycerol and 0.02% sodium azide.
Concentration:	0.5 mg/ml
Purification:	Purified from mouse ascites fluids or tissue culture supernatant by affinity chromatography (protein A/G)
Conjugation:	Biotin
Storage:	Store at -20°C as received.
Stability:	Stable for 12 months from date of receipt.
Predicted Protein Size:	48.3 kDa
Gene Name:	keratin 20
Database Link:	<a href="#">NP_061883</a> <a href="#">Entrez Gene 54474 Human</a> <a href="#">P35900</a>

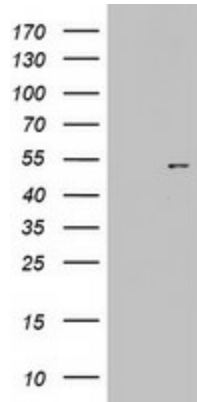
**Background:** The protein encoded by this gene is a member of the keratin family. The keratins are intermediate filament proteins responsible for the structural integrity of epithelial cells and are subdivided into cytokeratins and hair keratins. The type I cytokeratins consist of acidic proteins which are arranged in pairs of heterotypic keratin chains. This cytokeratin is a major cellular protein of mature enterocytes and goblet cells and is specifically expressed in the gastric and intestinal mucosa. The type I cytokeratin genes are clustered in a region of chromosome 17q12-q21. [provided by RefSeq, Jul 2008]



[View online »](#)

Synonyms: CD20; CK-20; CK20; K20; KRT21

**Product images:**



HEK293T cells were transfected with the pCMV6-ENTRY control (Left lane) or pCMV6-ENTRY KRT20 ([RC206784], Right lane) cDNA for 48 hrs and lysed. Equivalent amounts of cell lysates (5 ug per lane) were separated by SDS-PAGE and immunoblotted with anti-KRT20. Positive lysates [LY402725] (100ug) and [LC402725] (20ug) can be purchased separately from OriGene.