

Product datasheet for **TA802572BM**

VEGF Receptor 2 (KDR) Mouse Monoclonal Antibody (HRP conjugated) [Clone ID: OTI12C1]

Product data:

Product Type:	Primary Antibodies
Clone Name:	OTI12C1
Applications:	WB
Recommended Dilution:	WB 1:2000
Reactivity:	Human, Mouse, Rat
Host:	Mouse
Isotype:	IgG2a
Clonality:	Monoclonal
Immunogen:	Human recombinant protein fragment corresponding to amino acids 786-1356 of human KDR (NP_002244) produced in HEK293T cell.
Formulation:	PBS (pH 7.3) containing 1% BSA, 50% glycerol.
Concentration:	0.5 mg/ml
Purification:	Purified from mouse ascites fluids or tissue culture supernatant by affinity chromatography (protein A/G)
Conjugation:	HRP
Storage:	Store at -20°C as received.
Stability:	Stable for 12 months from date of receipt.
Gene Name:	kinase insert domain receptor
Database Link:	NP_002244 Entrez Gene 16542 Mouse Entrez Gene 25589 Rat Entrez Gene 3791 Human P35968



[View online »](#)

Background:

Vascular endothelial growth factor (VEGF) is a major growth factor for endothelial cells. This gene encodes one of the two receptors of the VEGF. This receptor, known as kinase insert domain receptor, is a type III receptor tyrosine kinase. It functions as the main mediator of VEGF-induced endothelial proliferation, survival, migration, tubular morphogenesis and sprouting. The signalling and trafficking of this receptor are regulated by multiple factors, including Rab GTPase, P2Y purine nucleotide receptor, integrin alphaVbeta3, T-cell protein tyrosine phosphatase, etc.. Mutations of this gene are implicated in infantile capillary hemangiomas. [provided by RefSeq, May 2009]

Synonyms:

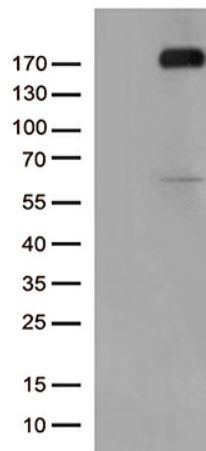
CD309; FLK1; VEGFR; VEGFR2

Protein Families:

Druggable Genome, ES Cell Differentiation/IPS, Protein Kinase, Transmembrane

Protein Pathways:

Cytokine-cytokine receptor interaction, Endocytosis, Focal adhesion, VEGF signaling pathway

Product images:

HEK293T cells were transfected with the pCMV6-ENTRY control (Left lane) or pCMV6-ENTRY KDR ([RC219851], Right lane) cDNA for 48 hrs and lysed. Equivalent amounts of cell lysates (5 ug per lane) were separated by SDS-PAGE and immunoblotted with anti-KDR. (1:50. Positive lysates [LY400826] (100ug) and [LC400826] (20ug) can be purchased separately from OriGene.