

## Product datasheet for **TA802554AM**

### **LKB1 (STK11) Mouse Monoclonal Antibody (Biotin conjugated) [Clone ID: OTI10A3]**

#### **Product data:**

<b>Product Type:</b>	Primary Antibodies
<b>Clone Name:</b>	OTI10A3
<b>Applications:</b>	IHC, WB
<b>Recommended Dilution:</b>	WB 1:2000, IHC 1:150
<b>Reactivity:</b>	Human, Mouse, Rat
<b>Host:</b>	Mouse
<b>Isotype:</b>	IgG1
<b>Clonality:</b>	Monoclonal
<b>Immunogen:</b>	Human recombinant protein fragment corresponding to amino acids 1-236 of human STK11 (NP_000446) produced in E.coli.
<b>Formulation:</b>	PBS (pH 7.3) containing 1% BSA, 50% glycerol and 0.02% sodium azide.
<b>Concentration:</b>	0.5 mg/ml
<b>Purification:</b>	Purified from mouse ascites fluids or tissue culture supernatant by affinity chromatography (protein A/G)
<b>Conjugation:</b>	Biotin
<b>Storage:</b>	Store at -20°C as received.
<b>Stability:</b>	Stable for 12 months from date of receipt.
<b>Predicted Protein Size:</b>	48.5 kDa
<b>Gene Name:</b>	serine/threonine kinase 11
<b>Database Link:</b>	<a href="#">NP_000446</a> <a href="#">Entrez Gene 20869 Mouse</a> <a href="#">Entrez Gene 314621 Rat</a> <a href="#">Entrez Gene 6794 Human</a> <a href="#">Q15831</a>
<b>Background:</b>	This gene, which encodes a member of the serine/threonine kinase family, regulates cell polarity and functions as a tumor suppressor. Mutations in this gene have been associated with Peutz-Jeghers syndrome, an autosomal dominant disorder characterized by the growth of polyps in the gastrointestinal tract, pigmented macules on the skin and mouth, and other neoplasms. Alternate transcriptional splice variants of this gene have been observed but have not been thoroughly characterized. [provided by RefSeq, Jul 2008]



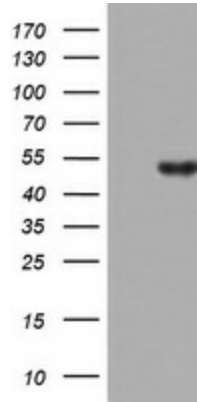
[View online »](#)

**Synonyms:** hLKB1; LKB1; PJS

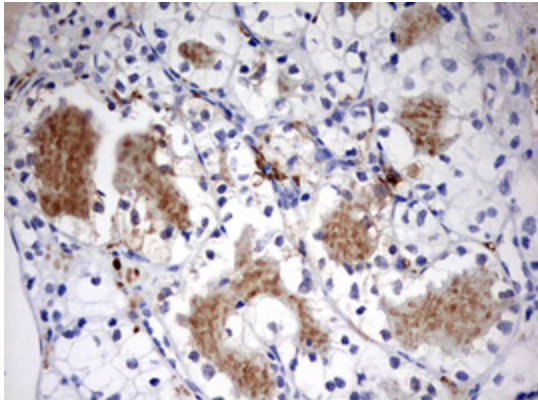
**Protein Families:** Druggable Genome, Protein Kinase

**Protein Pathways:** Adipocytokine signaling pathway, mTOR signaling pathway

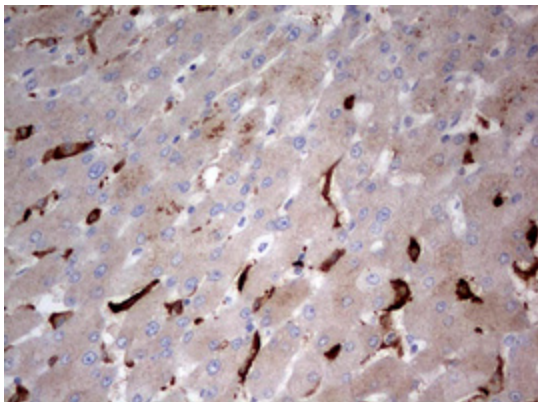
**Product images:**



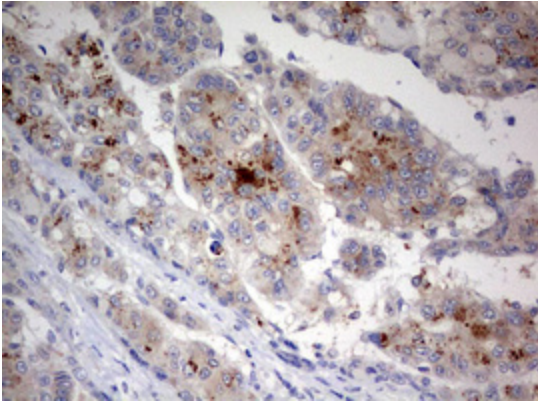
HEK293T cells were transfected with the pCMV6-ENTRY control (Cat# [PS100001], Left lane) or pCMV6-ENTRY STK11 (Cat# [RC202885], Right lane) cDNA for 48 hrs and lysed. Equivalent amounts of cell lysates (5 ug per lane) were separated by SDS-PAGE and immunoblotted with anti-STK11 (Cat# [TA802554]). Positive lysates [LY424705] (100ug) and [LC424705] (20ug) can be purchased separately from OriGene.



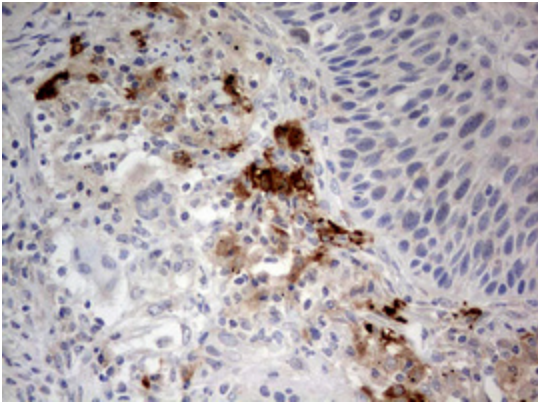
Immunohistochemical staining of paraffin-embedded Carcinoma of Human kidney tissue using anti-STK11 mouse monoclonal antibody. (Heat-induced epitope retrieval by 10mM citric buffer, pH6.0, 120°C for 3min, [TA802554])



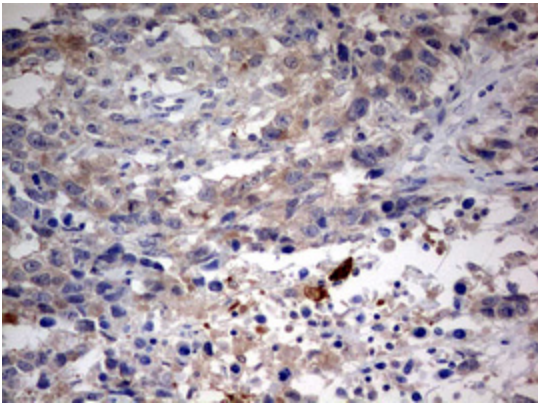
Immunohistochemical staining of paraffin-embedded Human liver tissue within the normal limits using anti-STK11 mouse monoclonal antibody. (Heat-induced epitope retrieval by 10mM citric buffer, pH6.0, 120°C for 3min, [TA802554])



Immunohistochemical staining of paraffin-embedded Carcinoma of Human liver tissue using anti-STK11 mouse monoclonal antibody. (Heat-induced epitope retrieval by 10mM citric buffer, pH6.0, 120°C for 3min, [TA802554])

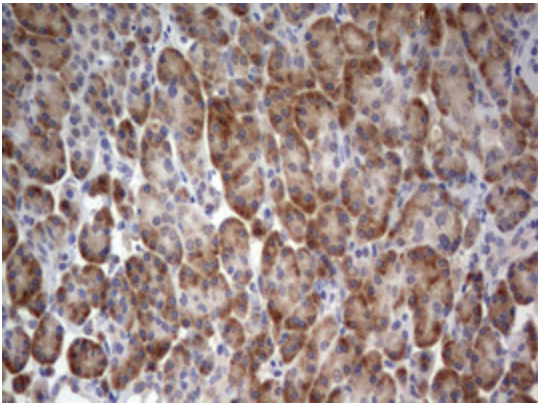


Immunohistochemical staining of paraffin-embedded Carcinoma of Human lung tissue using anti-STK11 mouse monoclonal antibody. (Heat-induced epitope retrieval by 10mM citric buffer, pH6.0, 120°C for 3min, [TA802554])

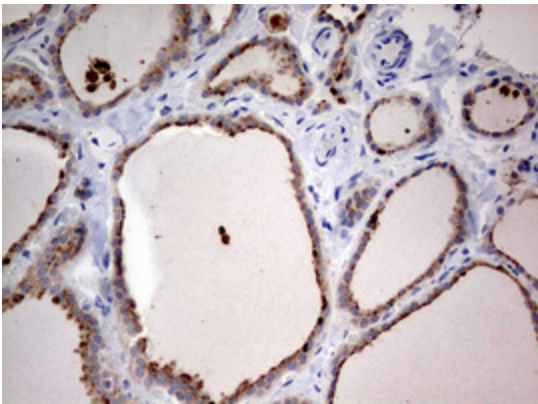


Immunohistochemical staining of paraffin-embedded Adenocarcinoma of Human ovary tissue using anti-STK11 mouse monoclonal antibody. (Heat-induced epitope retrieval by 10mM citric buffer, pH6.0, 120°C for 3min, [TA802554])

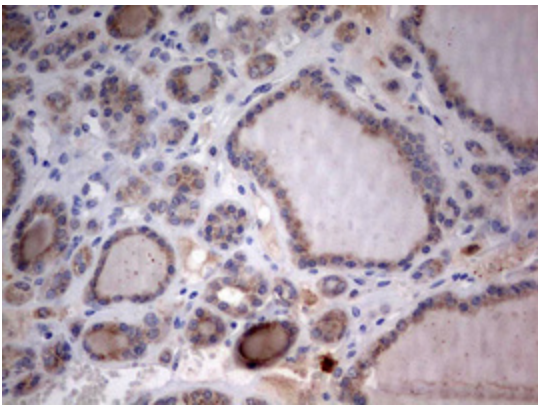




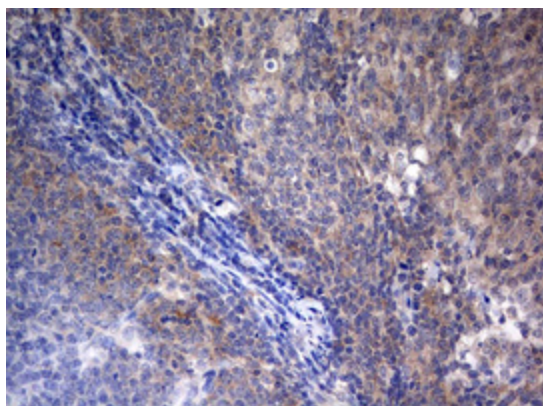
Immunohistochemical staining of paraffin-embedded Human pancreas tissue within the normal limits using anti-STK11 mouse monoclonal antibody. (Heat-induced epitope retrieval by 10mM citric buffer, pH6.0, 120°C for 3min, [TA802554])



Immunohistochemical staining of paraffin-embedded Human thyroid tissue within the normal limits using anti-STK11 mouse monoclonal antibody. (Heat-induced epitope retrieval by 10mM citric buffer, pH6.0, 120°C for 3min, [TA802554])



Immunohistochemical staining of paraffin-embedded Carcinoma of Human thyroid tissue using anti-STK11 mouse monoclonal antibody. (Heat-induced epitope retrieval by 10mM citric buffer, pH6.0, 120°C for 3min, [TA802554])



Immunohistochemical staining of paraffin-embedded Human tonsil within the normal limits using anti-STK11 mouse monoclonal antibody. (Heat-induced epitope retrieval by 10mM citric buffer, pH6.0, 120°C for 3min, [TA802554])