

Product datasheet for **TA802544S**

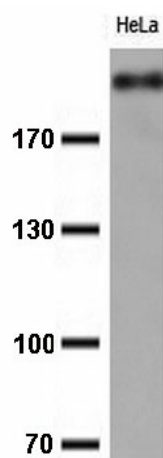
Ki67 (MKI67) Mouse Monoclonal Antibody [Clone ID: OTI8B11]

Product data:

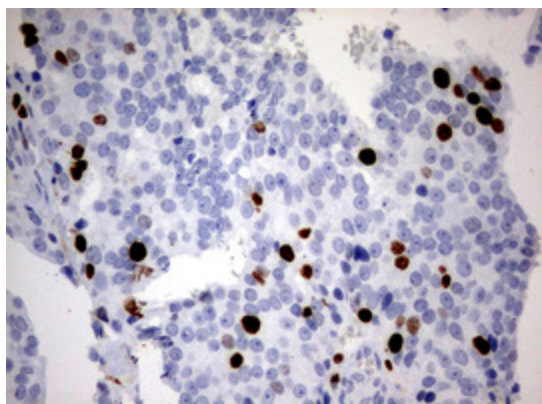
Product Type:	Primary Antibodies
Clone Name:	OTI8B11
Applications:	IHC, WB
Recommended Dilution:	IHC 1:100~500, WB 1:200 - 1:1000
Reactivity:	Human
Host:	Mouse
Isotype:	IgG2a
Clonality:	Monoclonal
Immunogen:	Human recombinant protein fragment corresponding to amino acids 1160-1493 of human MKI67 (NP_002408) produced in E.coli.
Formulation:	PBS (pH 7.3) containing 1% BSA, 50% glycerol and 0.02% sodium azide.
Concentration:	1 mg/ml
Purification:	Purified from mouse ascites fluids or tissue culture supernatant by affinity chromatography (protein A/G)
Conjugation:	Unconjugated
Storage:	Store at -20°C as received.
Stability:	Stable for 12 months from date of receipt.
Gene Name:	marker of proliferation Ki-67
Database Link:	NP_002408 Entrez Gene 4288 Human P46013
Background:	This gene encodes a nuclear protein that is associated with and may be necessary for cellular proliferation. Alternatively spliced transcript variants have been described. A related pseudogene exists on chromosome X. [provided by RefSeq, Mar 2009]
Synonyms:	KIA; MIB-; MIB-1; PPP1R105
Protein Families:	Druggable Genome, ES Cell Differentiation/IPS



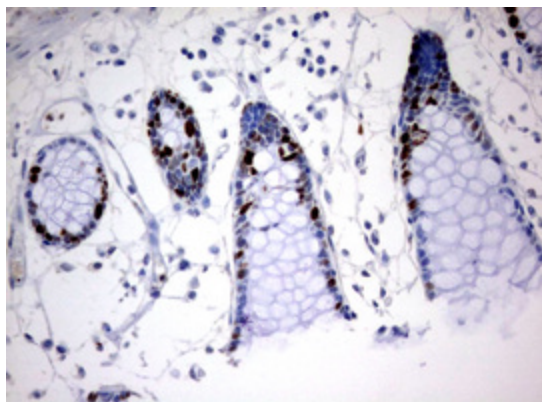
[View online »](#)

Product images:

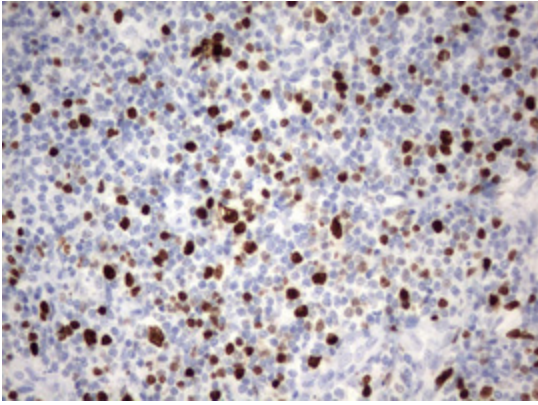
Western blot analysis of extracts (10ug) from 1 cell line by using anti-MKI67 monoclonal antibody at 1:200.



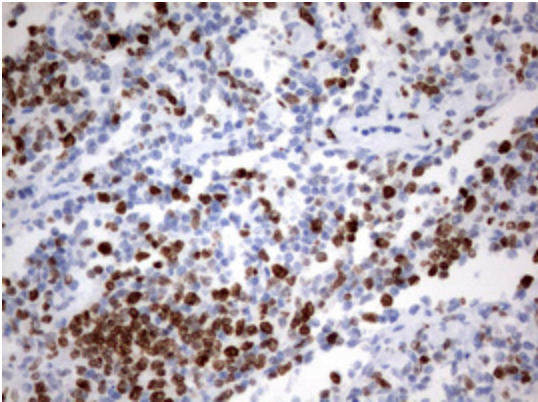
Immunohistochemical staining of paraffin-embedded Adenocarcinoma of Human breast tissue using anti-MKI67 mouse monoclonal antibody. (Heat-induced epitope retrieval by 10mM citric buffer, pH6.0, 120°C for 3min, [TA802544])



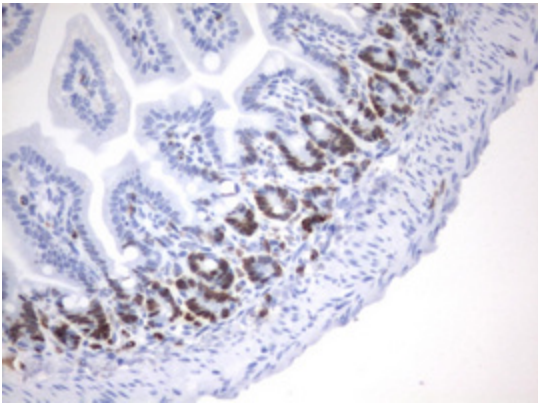
Immunohistochemical staining of paraffin-embedded Human colon tissue within the normal limits using anti-MKI67 mouse monoclonal antibody. (Heat-induced epitope retrieval by 10mM citric buffer, pH6.0, 120°C for 3min, [TA802544])



Immunohistochemical staining of paraffin-embedded Human lymph node tissue within the normal limits using anti-MKI67 mouse monoclonal antibody. (Heat-induced epitope retrieval by 10mM citric buffer, pH6.0, 120°C for 3min, [TA802544])



Immunohistochemical staining of paraffin-embedded Human lymphoma tissue using anti-MKI67 mouse monoclonal antibody. (Heat-induced epitope retrieval by 10mM citric buffer, pH6.0, 120°C for 3min, [TA802544])



Immunohistochemical staining of paraffin-embedded Mouse colon tissue using anti-MKI67 mouse monoclonal antibody. ([TA802544]; heat-induced epitope retrieval by 10mM citric buffer, pH6.0, 120°C for 3min)