

## Product datasheet for **TA802524AM**

### **GAPDH Mouse Monoclonal Antibody (Biotin conjugated) [Clone ID: OTI2F9]**

#### **Product data:**

<b>Product Type:</b>	Primary Antibodies
<b>Clone Name:</b>	OTI2F9
<b>Applications:</b>	IHC, WB
<b>Recommended Dilution:</b>	WB 1:2000, IHC 1:150
<b>Reactivity:</b>	Human, Mouse, Rat
<b>Host:</b>	Mouse
<b>Isotype:</b>	IgG1
<b>Clonality:</b>	Monoclonal
<b>Immunogen:</b>	Full length human recombinant protein of human GAPDH (NP_002037) produced in HEK293T cell.
<b>Formulation:</b>	PBS (PH 7.3) containing 1% BSA, 50% glycerol and 0.02% sodium azide.
<b>Concentration:</b>	0.5 mg/ml
<b>Purification:</b>	Purified from mouse ascites fluids or tissue culture supernatant by affinity chromatography (protein A/G)
<b>Conjugation:</b>	Biotin
<b>Storage:</b>	Store at -20°C as received.
<b>Stability:</b>	Stable for 12 months from date of receipt.
<b>Predicted Protein Size:</b>	35.9 kDa
<b>Gene Name:</b>	glyceraldehyde-3-phosphate dehydrogenase
<b>Database Link:</b>	<a href="#">NP_002037</a> <a href="#">Entrez Gene 14433 Mouse</a> <a href="#">Entrez Gene 24383 Rat</a> <a href="#">Entrez Gene 2597 Human</a> <a href="#">P04406</a>
<b>Background:</b>	The product of this gene catalyzes an important energy-yielding step in carbohydrate metabolism, the reversible oxidative phosphorylation of glyceraldehyde-3-phosphate in the presence of inorganic phosphate and nicotinamide adenine dinucleotide (NAD). The enzyme exists as a tetramer of identical chains. Many pseudogenes similar to this locus are present in the human genome. Two transcript variants encoding different isoforms have been found for this gene. [provided by RefSeq, Feb 2012]

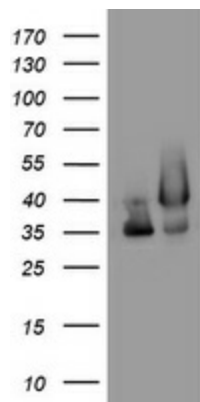


[View online »](#)

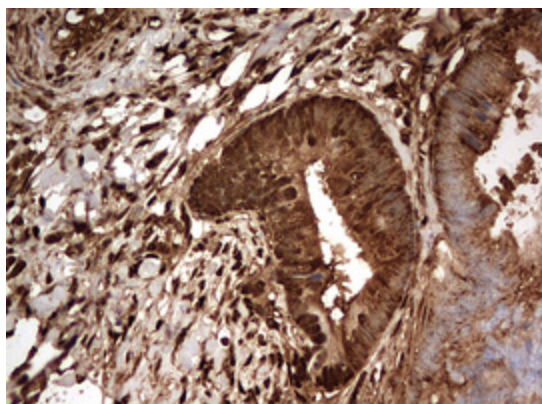
**Synonyms:** G3PD; GAPD; HEL-S-162eP

**Protein Families:** ES Cell Differentiation/IPS

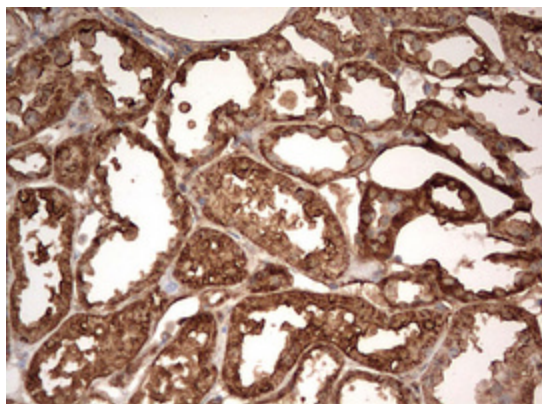
**Protein Pathways:** Alzheimer's disease, Glycolysis / Gluconeogenesis, Metabolic pathways

**Product images:**

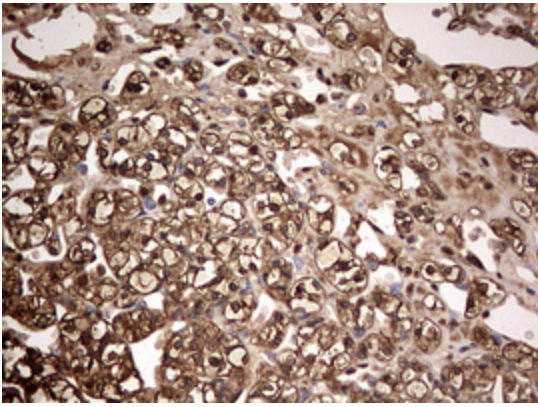
HEK293T cells were transfected with the pCMV6-ENTRY control (Left lane) or pCMV6-ENTRY GAPDH ([RC202309], Right lane) cDNA for 48 hrs and lysed. Equivalent amounts of cell lysates (5 ug per lane) were separated by SDS-PAGE and immunoblotted with anti-GAPDH. Positive lysates [LY419567] (100ug) and [LC419567] (20ug) can be purchased separately from OriGene.



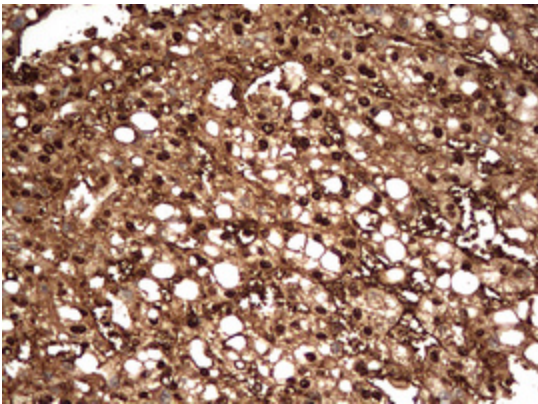
Immunohistochemical staining of paraffin-embedded Adenocarcinoma of Human colon tissue using anti-GAPDH mouse monoclonal antibody. (Heat-induced epitope retrieval by 10mM citric buffer, pH6.0, 120°C for 3min, [TA802524])



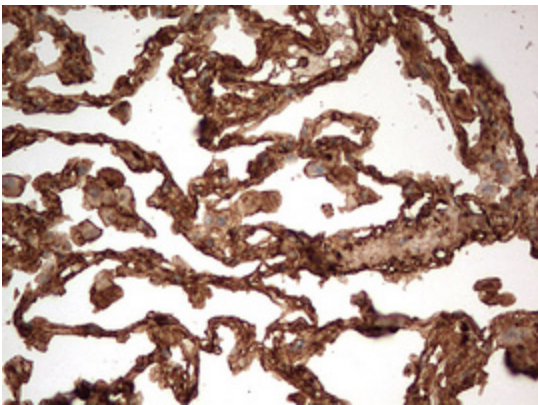
Immunohistochemical staining of paraffin-embedded Human Kidney tissue within the normal limits using anti-GAPDH mouse monoclonal antibody. (Heat-induced epitope retrieval by 10mM citric buffer, pH6.0, 120°C for 3min, [TA802524])



Immunohistochemical staining of paraffin-embedded Carcinoma of Human kidney tissue using anti-GAPDH mouse monoclonal antibody. (Heat-induced epitope retrieval by 10mM citric buffer, pH6.0, 120°C for 3min, [TA802524])

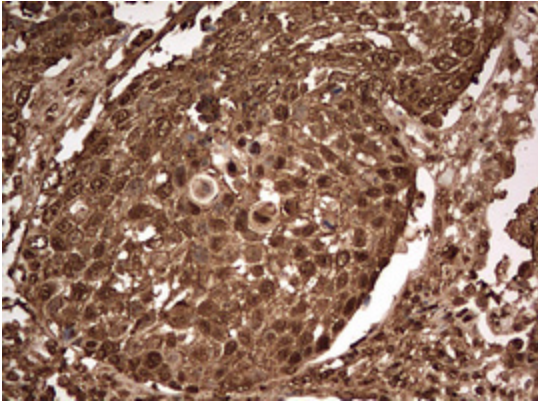


Immunohistochemical staining of paraffin-embedded Carcinoma of Human liver tissue using anti-GAPDH mouse monoclonal antibody. (Heat-induced epitope retrieval by 10mM citric buffer, pH6.0, 120°C for 3min, [TA802524])

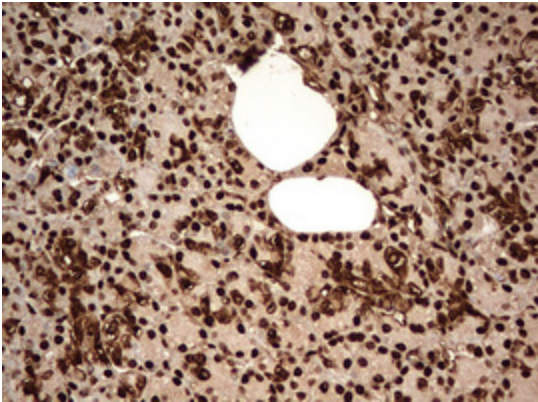


Immunohistochemical staining of paraffin-embedded Human lung tissue within the normal limits using anti-GAPDH mouse monoclonal antibody. (Heat-induced epitope retrieval by 10mM citric buffer, pH6.0, 120°C for 3min, [TA802524])

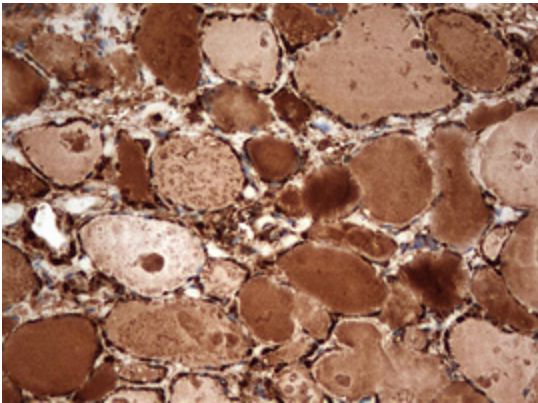




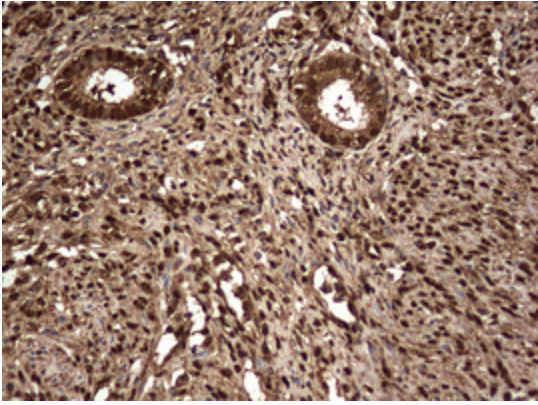
Immunohistochemical staining of paraffin-embedded Carcinoma of Human lung tissue using anti-GAPDH mouse monoclonal antibody. (Heat-induced epitope retrieval by 10mM citric buffer, pH6.0, 120°C for 3min, [TA802524])



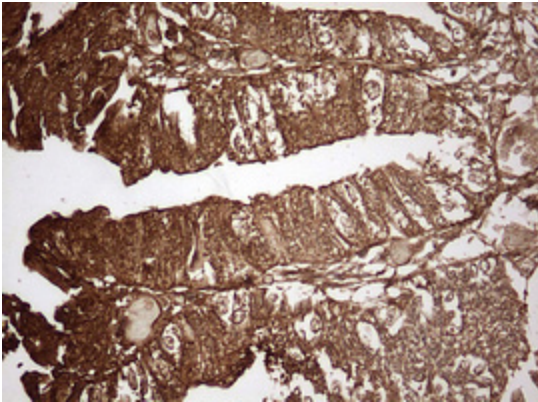
Immunohistochemical staining of paraffin-embedded Human pancreas tissue within the normal limits using anti-GAPDH mouse monoclonal antibody. (Heat-induced epitope retrieval by 10mM citric buffer, pH6.0, 120°C for 3min, [TA802524])



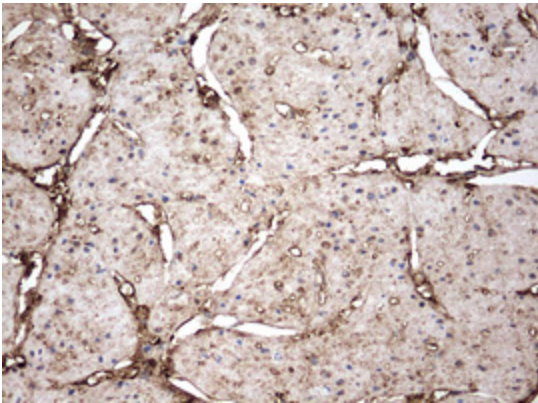
Immunohistochemical staining of paraffin-embedded Human thyroid tissue within the normal limits using anti-GAPDH mouse monoclonal antibody. (Heat-induced epitope retrieval by 10mM citric buffer, pH6.0, 120°C for 3min, [TA802524])



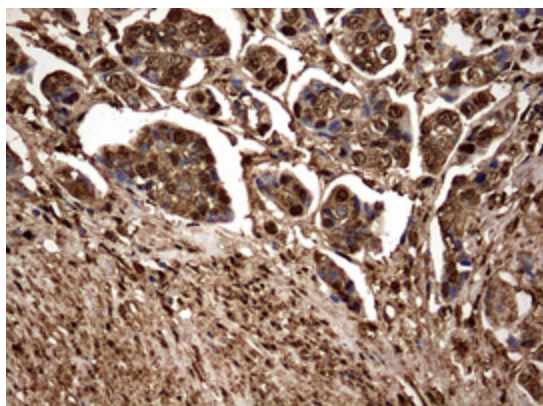
Immunohistochemical staining of paraffin-embedded Human endometrium tissue within the normal limits using anti-GAPDH mouse monoclonal antibody. (Heat-induced epitope retrieval by 10mM citric buffer, pH6.0, 120°C for 3min, [TA802524])



Immunohistochemical staining of paraffin-embedded Adenocarcinoma of Human endometrium tissue using anti-GAPDH mouse monoclonal antibody. (Heat-induced epitope retrieval by 10mM citric buffer, pH6.0, 120°C for 3min, [TA802524])



Immunohistochemical staining of paraffin-embedded Human bladder tissue within the normal limits using anti-GAPDH mouse monoclonal antibody. (Heat-induced epitope retrieval by 10mM citric buffer, pH6.0, 120°C for 3min, [TA802524])



Immunohistochemical staining of paraffin-embedded Carcinoma of Human bladder tissue using anti-GAPDH mouse monoclonal antibody. (Heat-induced epitope retrieval by 10mM citric buffer, pH6.0, 120°C for 3min, [TA802524])