

Product datasheet for **TA802505BM**

Topoisomerase II alpha (TOP2A) Mouse Monoclonal Antibody (HRP conjugated) [Clone ID: OTI6B4]

Product data:

Product Type:	Primary Antibodies
Clone Name:	OTI6B4
Applications:	IHC, WB
Recommended Dilution:	WB 1:2000
Reactivity:	Human, Mouse, Rat
Host:	Mouse
Isotype:	IgG1
Clonality:	Monoclonal
Immunogen:	Human recombinant protein fragment corresponding to amino acids 1100-1531 of human TOP2A(NP_001058) produced in E.coli.
Formulation:	PBS (pH 7.3) containing 1% BSA, 50% glycerol.
Concentration:	0.5 mg/ml
Purification:	Purified from mouse ascites fluids or tissue culture supernatant by affinity chromatography (protein A/G)
Conjugation:	HRP
Storage:	Store at -20°C as received.
Stability:	Stable for 12 months from date of receipt.
Predicted Protein Size:	174.2 kDa
Gene Name:	topoisomerase (DNA) II alpha
Database Link:	NP_001058 Entrez Gene 21973 Mouse Entrez Gene 360243 Rat Entrez Gene 7153 Human P11388



[View online »](#)

Background:

This gene encodes a DNA topoisomerase, an enzyme that controls and alters the topologic states of DNA during transcription. This nuclear enzyme is involved in processes such as chromosome condensation, chromatid separation, and the relief of torsional stress that occurs during DNA transcription and replication. It catalyzes the transient breaking and rejoining of two strands of duplex DNA which allows the strands to pass through one another, thus altering the topology of DNA. Two forms of this enzyme exist as likely products of a gene duplication event. The gene encoding this form, alpha, is localized to chromosome 17 and the beta gene is localized to chromosome 3. The gene encoding this enzyme functions as the target for several anticancer agents and a variety of mutations in this gene have been associated with the development of drug resistance. Reduced activity of this enzyme may also play a role in ataxia-telangiectasia. [provided by RefSeq, Jul

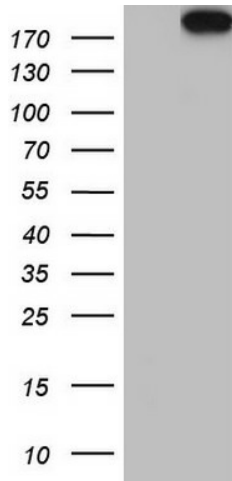
Synonyms:

TOP2; TOP2alpha; TOPIIA; TP2A

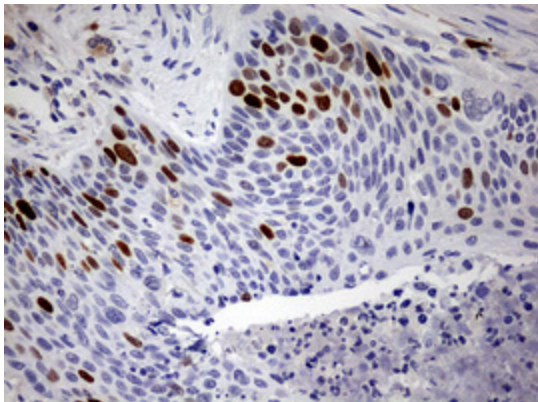
Protein Families:

Druggable Genome

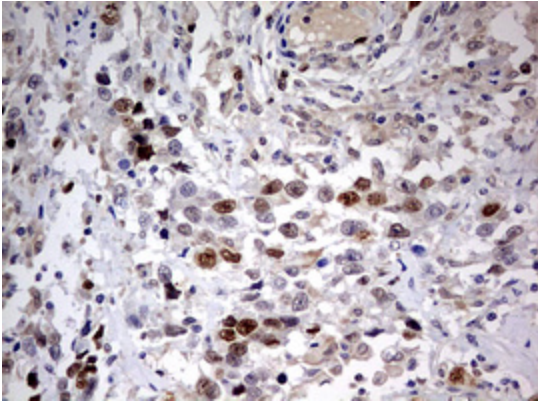
Product images:



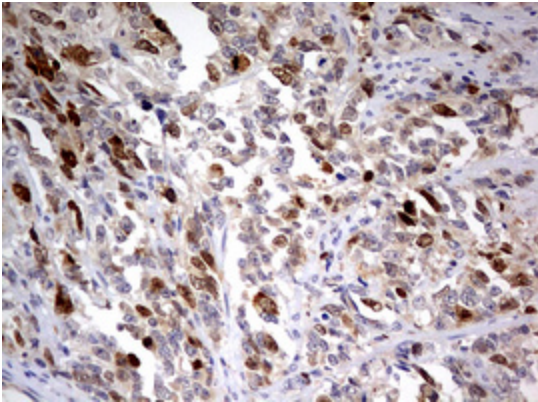
HEK293T cells were transfected with the pCMV6-ENTRY control (Left lane) or pCMV6-ENTRY TOP2A [RC221568], Right lane) cDNA for 48 hrs and lysed. Equivalent amounts of cell lysates (5 ug per lane) were separated by SDS-PAGE and immunoblotted with anti-TOP2A. Positive lysates [LY420704] (100ug) and [LC420704] (20ug) can be purchased separately from OriGene.



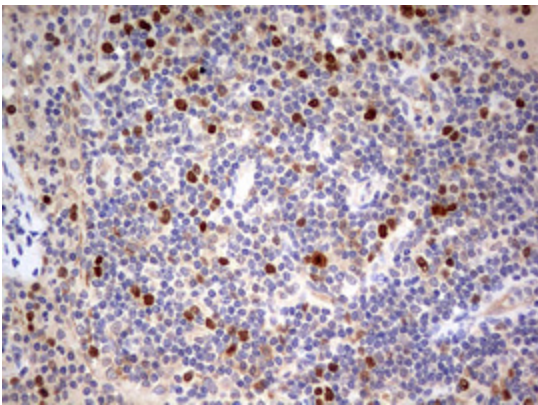
Immunohistochemical staining of paraffin-embedded Carcinoma of Human lung tissue using anti-TOP2A mouse monoclonal antibody. ([TA802505]) Dilution: 1:150



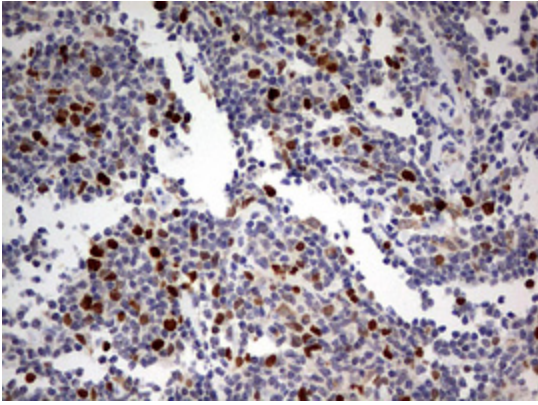
Immunohistochemical staining of paraffin-embedded Adenocarcinoma of Human ovary tissue using anti-TOP2A mouse monoclonal antibody. ([TA802505]) Dilution: 1:150



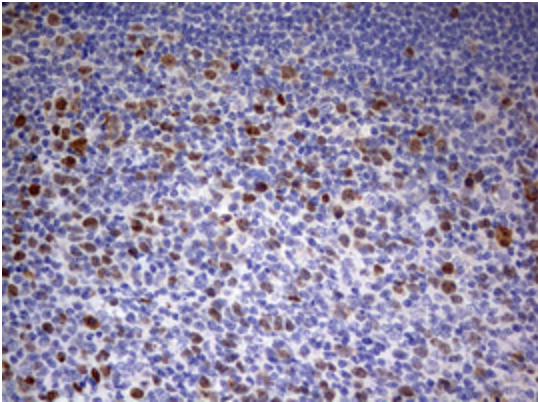
Immunohistochemical staining of paraffin-embedded Adenocarcinoma of Human endometrium tissue using anti-TOP2A mouse monoclonal antibody. ([TA802505]) Dilution: 1:150



Immunohistochemical staining of paraffin-embedded Human lymph node tissue within the normal limits using anti-TOP2A mouse monoclonal antibody. ([TA802505]) Dilution: 1:150



Immunohistochemical staining of paraffin-embedded Human lymphoma tissue using anti-TOP2A mouse monoclonal antibody. ([TA802505]) Dilution: 1:150



Immunohistochemical staining of paraffin-embedded Human tonsil within the normal limits using anti-TOP2A mouse monoclonal antibody. ([TA802505]) Dilution: 1:150