

## Product datasheet for **TA802495BM**

### DOT1L Mouse Monoclonal Antibody (HRP conjugated) [Clone ID: OT11F8]

#### Product data:

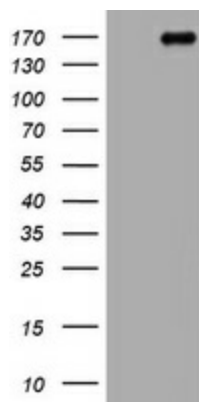
Product Type:	Primary Antibodies
Clone Name:	OT11F8
Applications:	WB
Recommended Dilution:	WB 1:2000
Reactivity:	Human
Host:	Mouse
Isotype:	IgG1
Clonality:	Monoclonal
Immunogen:	Human recombinant protein fragment corresponding to amino acids 1-434 of human DOT1L (NP_115871) produced in E.coli.
Formulation:	PBS (pH 7.3) containing 1% BSA, 50% glycerol.
Concentration:	0.5 mg/ml
Purification:	Purified from mouse ascites fluids or tissue culture supernatant by affinity chromatography (protein A/G)
Conjugation:	HRP
Storage:	Store at -20°C as received.
Stability:	Stable for 12 months from date of receipt.
Predicted Protein Size:	164.7 kDa
Gene Name:	DOT1 like histone lysine methyltransferase
Database Link:	<a href="#">NP_115871</a> <a href="#">Entrez Gene 84444 Human</a> <a href="#">Q8TEK3</a>
Background:	The protein encoded by this gene is a histone methyltransferase that methylates lysine-79 of histone H3. It is inactive against free core histones, but shows significant histone methyltransferase activity against nucleosomes. [provided by RefSeq, Aug 2011]
Synonyms:	DOT1; KMT4
Protein Families:	Druggable Genome



[View online »](#)

Protein Pathways: Lysine degradation

### Product images:



HEK293T cells were transfected with the pCMV6-ENTRY control (Left lane) or pCMV6-ENTRY DOT1L ([RC218547], Right lane) cDNA for 48 hrs and lysed. Equivalent amounts of cell lysates (5 ug per lane) were separated by SDS-PAGE and immunoblotted with anti-DOT1L. Positive lysates [LY410109] (100ug) and [LC410109] (20ug) can be purchased separately from OriGene.