

Product datasheet for **TA802487AM**

C3orf15 (MAATS1) Mouse Monoclonal Antibody (Biotin conjugated) [Clone ID: OTI7F7]

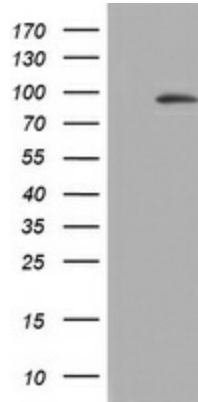
Product data:

Product Type:	Primary Antibodies
Clone Name:	OTI7F7
Applications:	WB
Recommended Dilution:	WB 1:2000
Reactivity:	Human
Host:	Mouse
Isotype:	IgG2b
Clonality:	Monoclonal
Immunogen:	Human recombinant protein fragment corresponding to amino acids 1-313 of human C3orf15 (NP_203528) produced in E.coli.
Formulation:	PBS (pH 7.3) containing 1% BSA, 50% glycerol and 0.02% sodium azide.
Concentration:	0.5 mg/ml
Purification:	Purified from mouse ascites fluids or tissue culture supernatant by affinity chromatography (protein A/G)
Conjugation:	Biotin
Storage:	Store at -20°C as received.
Stability:	Stable for 12 months from date of receipt.
Predicted Protein Size:	89.8 kDa
Gene Name:	MYCBP associated and testis expressed 1
Database Link:	NP_203528 Entrez Gene 89876 Human Q7Z4T9
Synonyms:	AAT1; AAT1alpha; C3orf15; CaM-IP2; SPATA26



[View online »](#)

Product images:



HEK293T cells were transfected with the pCMV6-ENTRY control (Left lane) or pCMV6-ENTRY C3orf15 ([RC221319], Right lane) cDNA for 48 hrs and lysed. Equivalent amounts of cell lysates (5 ug per lane) were separated by SDS-PAGE and immunoblotted with anti-C3orf15. Positive lysates [LY409582] (100ug) and [LC409582] (20ug) can be purchased separately from OriGene.