

## Product datasheet for **TA802387M**

### SOX9 Mouse Monoclonal Antibody [Clone ID: OTI2H10]

#### Product data:

Product Type:	Primary Antibodies
Clone Name:	OTI2H10
Applications:	IHC, WB
Recommended Dilution:	WB 1:2000, IHC 1:150
Reactivity:	Human, Mouse, Rat
Host:	Mouse
Isotype:	IgG1
Clonality:	Monoclonal
Immunogen:	Human recombinant protein fragment corresponding to amino acids 1-205 of human SOX9 (NP_000337) produced in E.coli.
Formulation:	PBS (pH 7.3) containing 1% BSA, 50% glycerol and 0.02% sodium azide.
Concentration:	1 mg/ml
Purification:	Purified from mouse ascites fluids or tissue culture supernatant by affinity chromatography (protein A/G)
Conjugation:	Unconjugated
Storage:	Store at -20°C as received.
Stability:	Stable for 12 months from date of receipt.
Predicted Protein Size:	56 kDa
Gene Name:	SRY-box 9
Database Link:	<a href="#">NP_000337</a> <a href="#">Entrez Gene 20682 Mouse</a> <a href="#">Entrez Gene 140586 Rat</a> <a href="#">Entrez Gene 6662 Human</a> <a href="#">P48436</a>
Background:	The protein encoded by this gene recognizes the sequence CCTTGAG along with other members of the HMG-box class DNA-binding proteins. It acts during chondrocyte differentiation and, with steroidogenic factor 1, regulates transcription of the anti-Muellerian hormone (AMH) gene. Deficiencies lead to the skeletal malformation syndrome campomelic dysplasia, frequently with sex reversal. [provided by RefSeq, Jul 2008]

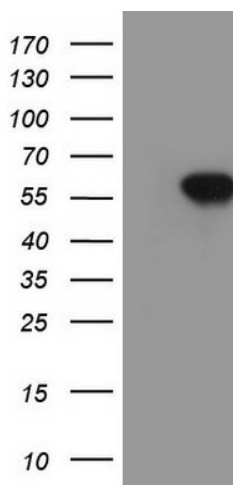


[View online »](#)

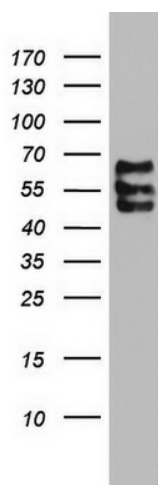
**Synonyms:** CMD1; CMPD1; SRA1; SRXX2; SRXY10

**Protein Families:** Adult stem cells, Druggable Genome, Embryonic stem cells, ES Cell Differentiation/IPS, Induced pluripotent stem cells, Transcription Factors

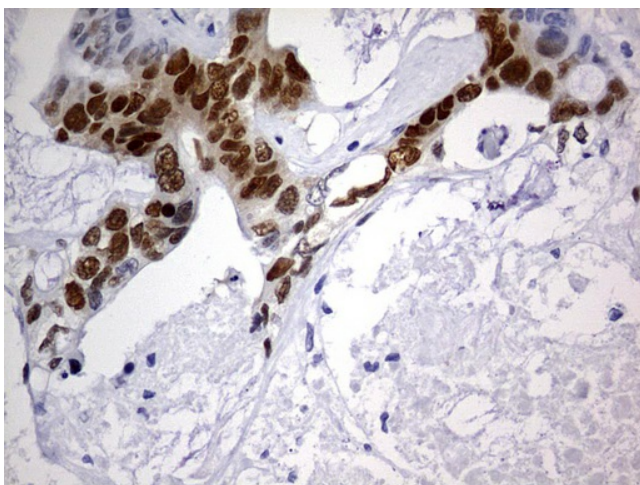
### Product images:



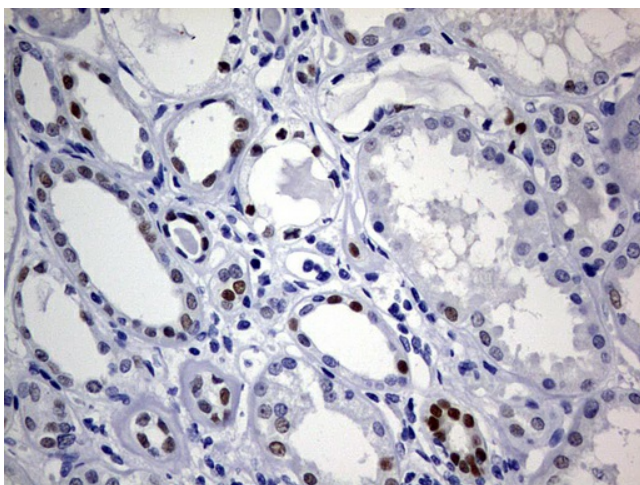
HEK293T cells were transfected with the pCMV6-ENTRY control (Cat# [PS100001], Left lane) or pCMV6-ENTRY SOX9 (Cat# [RC208944], Right lane) cDNA for 48 hrs and lysed. Equivalent amounts of cell lysates (5 ug per lane) were separated by SDS-PAGE and immunoblotted with anti-SOX9 (Cat# [TA802387]). Positive lysates [LY424779] (100ug) and [LC424779] (20ug) can be purchased separately from OriGene.



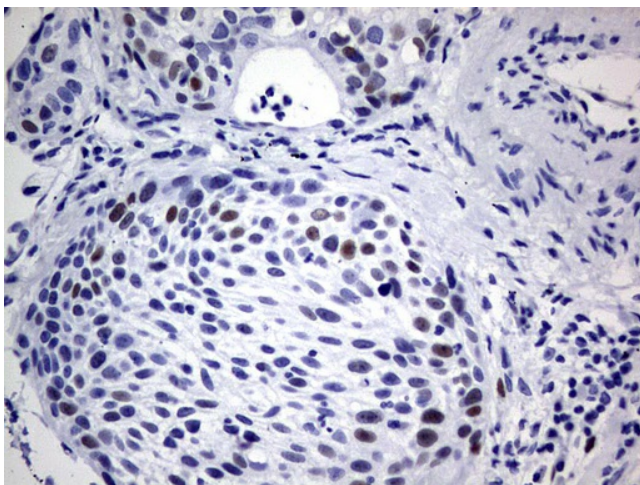
Western blot analysis of HT29 cell lysate (35ug) by using anti-SOX9 monoclonal antibody. Dilution: 1:500



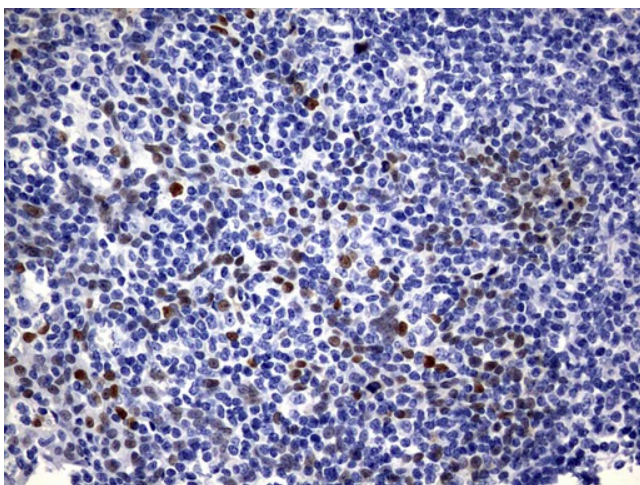
Immunohistochemical staining of paraffin-embedded Adenocarcinoma of Human colon tissue using anti-SOX9 mouse monoclonal antibody. Heat-induced epitope retrieval by EDTA solution buffer pH 8.0 at 120°C for 3 min.



Immunohistochemical staining of paraffin-embedded Human Kidney tissue within the normal limits using anti-SOX9 mouse monoclonal antibody. Heat-induced epitope retrieval by EDTA solution buffer pH 8.0 at 120°C for 3 min.



Immunohistochemical staining of paraffin-embedded Carcinoma of Human lung tissue using anti-SOX9 mouse monoclonal antibody. Heat-induced epitope retrieval by EDTA solution buffer pH 8.0 at 120°C for 3 min.



Immunohistochemical staining of paraffin-embedded Human tonsil within the normal limits using anti-SOX9 mouse monoclonal antibody. Heat-induced epitope retrieval by EDTA solution buffer pH 8.0 at 120°C for 3 min.