

Product datasheet for **TA802374AM**

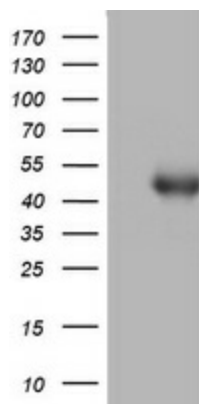
SPATA2L Mouse Monoclonal Antibody (Biotin conjugated) [Clone ID: OTI2D8]

Product data:

Product Type:	Primary Antibodies
Clone Name:	OTI2D8
Applications:	WB
Recommended Dilution:	WB 1:2000
Reactivity:	Human, Mouse, Rat
Host:	Mouse
Isotype:	IgG1
Clonality:	Monoclonal
Immunogen:	Human recombinant protein fragment corresponding to amino acids 179-424 of human SPATA2L (NP_689552) produced in E.coli.
Formulation:	PBS (pH 7.3) containing 1% BSA, 50% glycerol and 0.02% sodium azide.
Concentration:	0.5 mg/ml
Purification:	Purified from mouse ascites fluids or tissue culture supernatant by affinity chromatography (protein A/G)
Conjugation:	Biotin
Storage:	Store at -20°C as received.
Stability:	Stable for 12 months from date of receipt.
Predicted Protein Size:	46 kDa
Gene Name:	spermatogenesis associated 2 like
Database Link:	NP_689552 Entrez Gene 78779 Mouse Entrez Gene 498963 Rat Entrez Gene 124044 Human Q8IUW3
Synonyms:	C16orf76; tam0



[View online »](#)

Product images:

HEK293T cells were transfected with the pCMV6-ENTRY control (Left lane) or pCMV6-ENTRY SPATA2L ([RC208075], Right lane) cDNA for 48 hrs and lysed. Equivalent amounts of cell lysates (5 ug per lane) were separated by SDS-PAGE and immunoblotted with anti-SPATA2L. Positive lysates [LY407590] (100ug) and [LC407590] (20ug) can be purchased separately from OriGene.