

Product datasheet for **TA802342**

AFAP (AFAP1) Mouse Monoclonal Antibody [Clone ID: OTI3C1]

Product data:

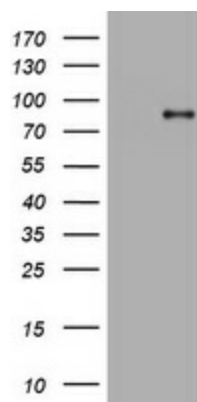
Product Type:	Primary Antibodies
Clone Name:	OTI3C1
Applications:	WB
Recommended Dilution:	WB 1:2000
Reactivity:	Human, Mouse, Rat
Host:	Mouse
Isotype:	IgG1
Clonality:	Monoclonal
Immunogen:	Human recombinant protein fragment corresponding to amino acids 100-386 of human AFAP1 (NP_940997) produced in E.coli.
Formulation:	PBS (pH 7.3) containing 1% BSA, 50% glycerol and 0.02% sodium azide.
Concentration:	1 mg/ml
Purification:	Purified from mouse ascites fluids or tissue culture supernatant by affinity chromatography (protein A/G)
Conjugation:	Unconjugated
Storage:	Store at -20°C as received.
Stability:	Stable for 12 months from date of receipt.
Predicted Protein Size:	80.5 kDa
Gene Name:	actin filament associated protein 1
Database Link:	NP_940997 Entrez Gene 70292 Mouse Entrez Gene 140935 Rat Entrez Gene 60312 Human Q8N556
Background:	The protein encoded by this gene is a Src binding partner. It may represent a potential modulator of actin filament integrity in response to cellular signals, and may function as an adaptor protein by linking Src family members and/or other signaling proteins to actin filaments. Multiple transcript variants encoding different isoforms have been found for this gene. [provided by RefSeq, Aug 2008]



[View online »](#)

Synonyms: AFAP; AFAP-110; AFAP110

Product images:



HEK293T cells were transfected with the pCMV6-ENTRY control (Left lane) or pCMV6-ENTRY AFAP1 ([RC215587], Right lane) cDNA for 48 hrs and lysed. Equivalent amounts of cell lysates (5 ug per lane) were separated by SDS-PAGE and immunoblotted with anti-AFAP1. Positive lysates [LY404799] (100ug) and [LC404799] (20ug) can be purchased separately from OriGene.