

## Product datasheet for **TA802329AM**

### AFAP (AFAP1) Mouse Monoclonal Antibody (Biotin conjugated) [Clone ID: OTI2G9]

#### Product data:

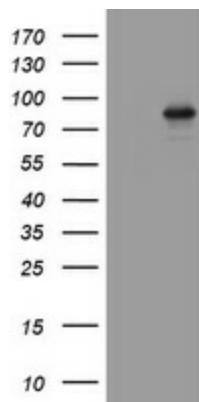
Product Type:	Primary Antibodies
Clone Name:	OTI2G9
Applications:	IHC, WB
Recommended Dilution:	WB 1:2000, IHC 1:150
Reactivity:	Human, Mouse, Rat
Host:	Mouse
Isotype:	IgG1
Clonality:	Monoclonal
Immunogen:	Human recombinant protein fragment corresponding to amino acids 100-386 of human AFAP1 (NP_940997) produced in E.coli.
Formulation:	PBS (pH 7.3) containing 1% BSA, 50% glycerol and 0.02% sodium azide.
Concentration:	0.5 mg/ml
Purification:	Purified from mouse ascites fluids or tissue culture supernatant by affinity chromatography (protein A/G)
Conjugation:	Biotin
Storage:	Store at -20°C as received.
Stability:	Stable for 12 months from date of receipt.
Predicted Protein Size:	80.5 kDa
Gene Name:	actin filament associated protein 1
Database Link:	<a href="#">NP_940997</a> <a href="#">Entrez Gene 70292 Mouse</a> <a href="#">Entrez Gene 140935 Rat</a> <a href="#">Entrez Gene 60312 Human</a> <a href="#">Q8N556</a>
Background:	The protein encoded by this gene is a Src binding partner. It may represent a potential modulator of actin filament integrity in response to cellular signals, and may function as an adaptor protein by linking Src family members and/or other signaling proteins to actin filaments. Multiple transcript variants encoding different isoforms have been found for this gene. [provided by RefSeq, Aug 2008]



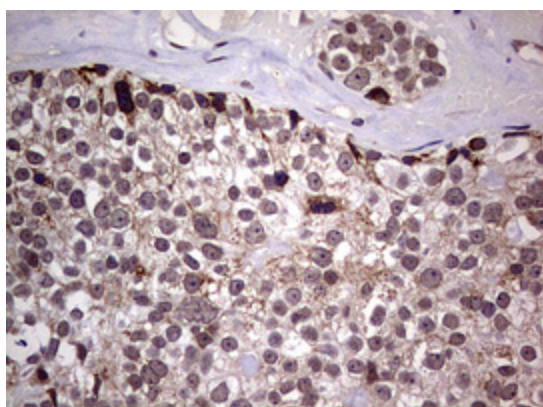
[View online »](#)

Synonyms: AFAP; AFAP-110; AFAP110

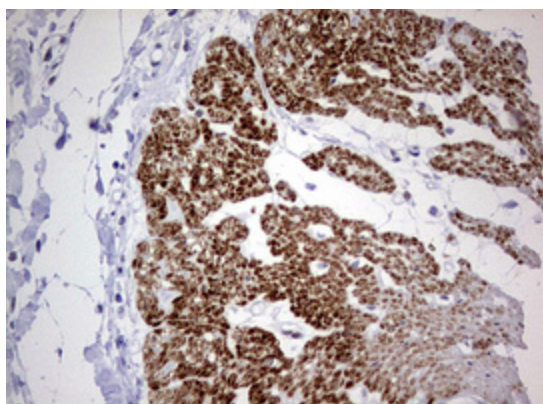
**Product images:**



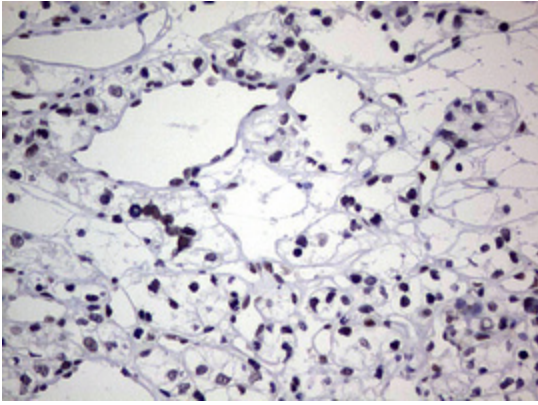
HEK293T cells were transfected with the pCMV6-ENTRY control (Cat# [PS100001], Left lane) or pCMV6-ENTRY AFAP1 (Cat# [RC215587], Right lane) cDNA for 48 hrs and lysed. Equivalent amounts of cell lysates (5 ug per lane) were separated by SDS-PAGE and immunoblotted with anti-AFAP1 (Cat# [TA802329]). Positive lysates [LY404799] (100ug) and [LC404799] (20ug) can be purchased separately from OriGene.



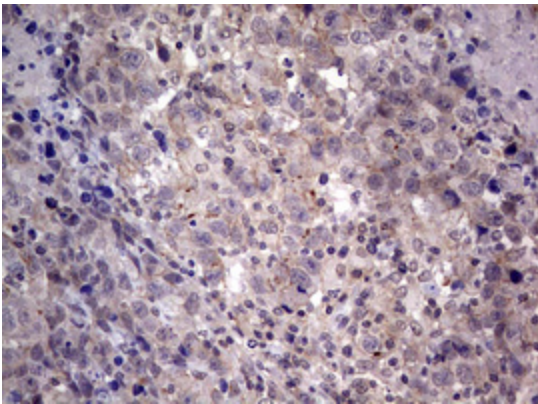
Immunohistochemical staining of paraffin-embedded Adenocarcinoma of Human breast tissue using anti-AFAP1 mouse monoclonal antibody. (Heat-induced epitope retrieval by 10mM citric buffer, pH6.0, 120°C for 3min, [TA802329])



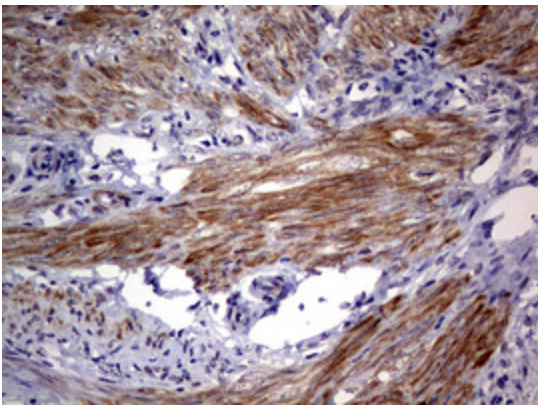
Immunohistochemical staining of paraffin-embedded Human colon tissue within the normal limits using anti-AFAP1 mouse monoclonal antibody. (Heat-induced epitope retrieval by 10mM citric buffer, pH6.0, 120°C for 3min, [TA802329])



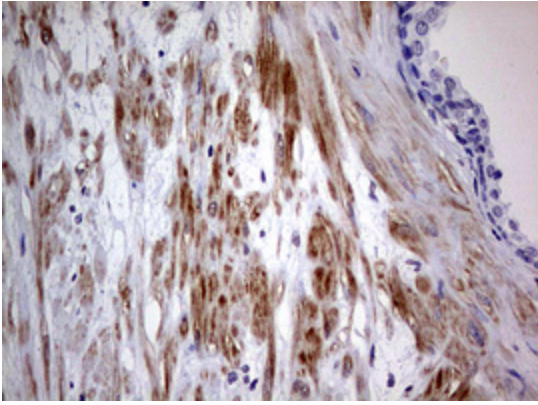
Immunohistochemical staining of paraffin-embedded Carcinoma of Human kidney tissue using anti-AFAP1 mouse monoclonal antibody. (Heat-induced epitope retrieval by 10mM citric buffer, pH6.0, 120°C for 3min, [TA802329])



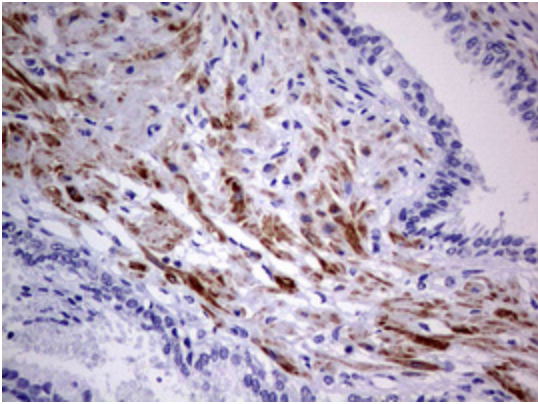
Immunohistochemical staining of paraffin-embedded Adenocarcinoma of Human ovary tissue using anti-AFAP1 mouse monoclonal antibody. (Heat-induced epitope retrieval by 10mM citric buffer, pH6.0, 120°C for 3min, [TA802329])



Immunohistochemical staining of paraffin-embedded Human endometrium tissue within the normal limits using anti-AFAP1 mouse monoclonal antibody. (Heat-induced epitope retrieval by 10mM citric buffer, pH6.0, 120°C for 3min, [TA802329])



Immunohistochemical staining of paraffin-embedded Human prostate tissue within the normal limits using anti-AFAP1 mouse monoclonal antibody. (Heat-induced epitope retrieval by 10mM citric buffer, pH6.0, 120°C for 3min, [TA802329])



Immunohistochemical staining of paraffin-embedded Carcinoma of Human prostate tissue using anti-AFAP1 mouse monoclonal antibody. (Heat-induced epitope retrieval by 10mM citric buffer, pH6.0, 120°C for 3min, [TA802329])