

## Product datasheet for **TA802325AM**

### NDUFS2 Mouse Monoclonal Antibody (Biotin conjugated) [Clone ID: OTI2G2]

#### Product data:

Product Type:	Primary Antibodies
Clone Name:	OTI2G2
Applications:	IHC, WB
Recommended Dilution:	WB 1:2000
Reactivity:	Human, Mouse, Rat
Host:	Mouse
Isotype:	IgG1
Clonality:	Monoclonal
Immunogen:	Human recombinant protein fragment corresponding to amino acids 205-463 of human NDUFS2 (NP_004541) produced in E.coli.
Formulation:	PBS (pH 7.3) containing 1% BSA, 50% glycerol and 0.02% sodium azide.
Concentration:	0.5 mg/ml
Purification:	Purified from mouse ascites fluids or tissue culture supernatant by affinity chromatography (protein A/G)
Conjugation:	Biotin
Storage:	Store at -20°C as received.
Stability:	Stable for 12 months from date of receipt.
Predicted Protein Size:	49.1 kDa
Gene Name:	NADH:ubiquinone oxidoreductase core subunit S2
Database Link:	<a href="#">NP_004541</a> <a href="#">Entrez Gene 226646 Mouse</a> <a href="#">Entrez Gene 289218 Rat</a> <a href="#">Entrez Gene 4720 Human</a> <a href="#">O75306</a>



[View online »](#)

**Background:**

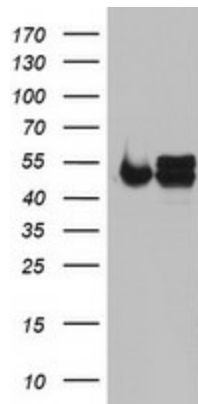
The protein encoded by this gene is a core subunit of the mitochondrial membrane respiratory chain NADH dehydrogenase (complex I). Mammalian mitochondrial complex I is composed of at least 43 different subunits, 7 of which are encoded by the mitochondrial genome, and the rest are the products of nuclear genes. The iron-sulfur protein fraction of complex I is made up of 7 subunits, including this gene product. Complex I catalyzes the NADH oxidation with concomitant ubiquinone reduction and proton ejection out of the mitochondria. Mutations in this gene are associated with mitochondrial complex I deficiency. Alternatively spliced transcript variants encoding different isoforms have been found for this gene. [provided by RefSeq, Oct 2009]

**Synonyms:**

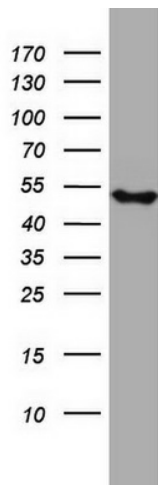
CI-49

**Protein Pathways:**

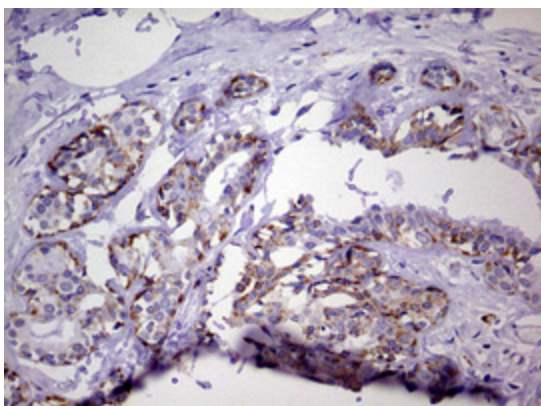
Alzheimer's disease, Huntington's disease, Metabolic pathways, Oxidative phosphorylation, Parkinson's disease

**Product images:**


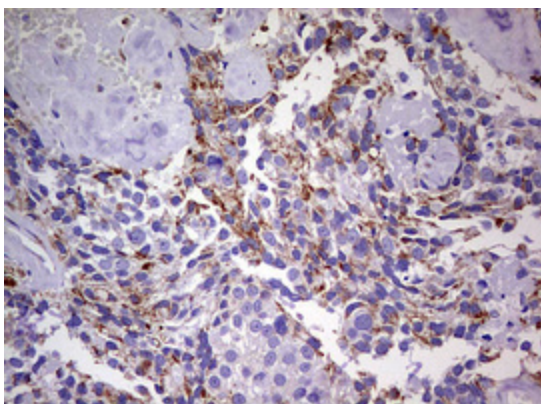
HEK293T cells were transfected with the pCMV6-ENTRY control (Left lane) or pCMV6-ENTRY NDUFS2 ([RC203485], Right lane) cDNA for 48 hrs and lysed. Equivalent amounts of cell lysates (5 ug per lane) were separated by SDS-PAGE and immunoblotted with anti-NDUFS2. Positive lysates [LY417919] (100ug) and [LC417919] (20ug) can be purchased separately from OriGene.



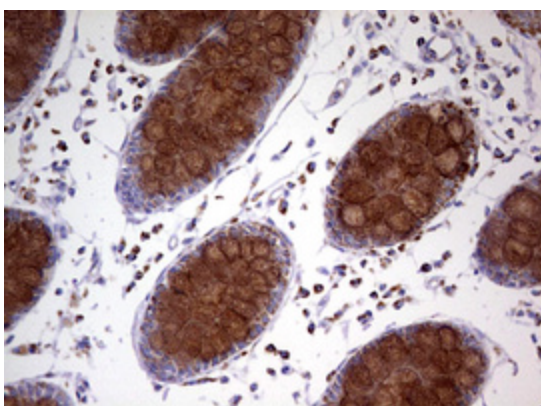
Western blot analysis of A549 cell lysate (35ug) by using anti-NDUFS2 monoclonal antibody. Dilution: 1:500



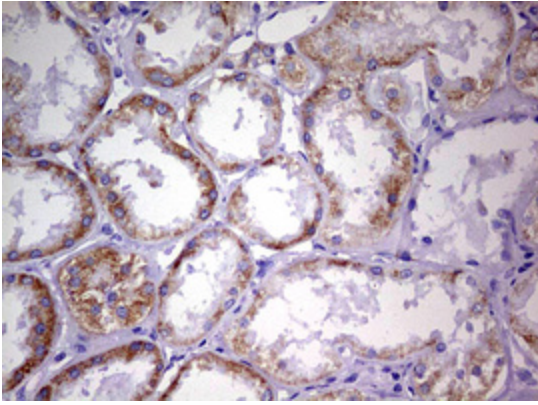
Immunohistochemical staining of paraffin-embedded Human breast tissue within the normal limits using anti-NDUFS2 mouse monoclonal antibody. ([TA802325]) Dilution: 1:150



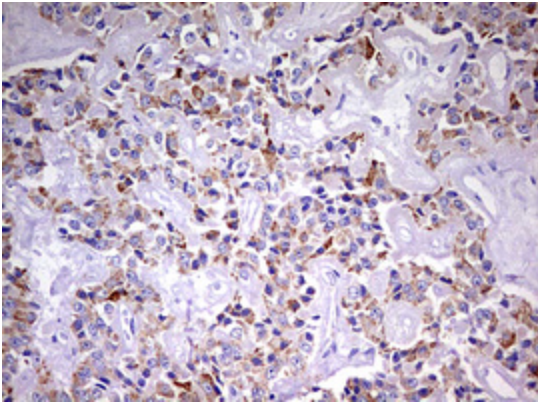
Immunohistochemical staining of paraffin-embedded Adenocarcinoma of Human breast tissue using anti-NDUFS2 mouse monoclonal antibody. ([TA802325]) Dilution: 1:150



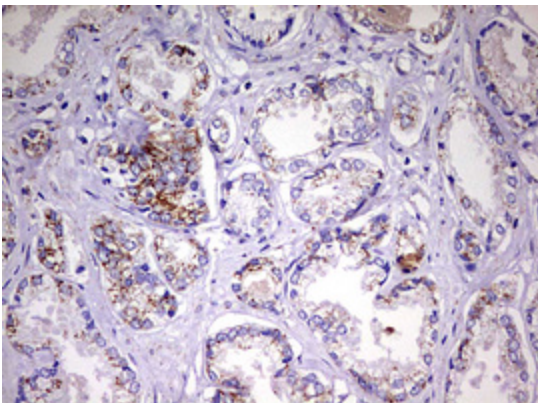
Immunohistochemical staining of paraffin-embedded Human colon tissue within the normal limits using anti-NDUFS2 mouse monoclonal antibody. ([TA802325]) Dilution: 1:150



Immunohistochemical staining of paraffin-embedded Human Kidney tissue within the normal limits using anti-NDUFS2 mouse monoclonal antibody. ([TA802325]) Dilution: 1:150



Immunohistochemical staining of paraffin-embedded Carcinoma of Human pancreas tissue using anti-NDUFS2 mouse monoclonal antibody. ([TA802325]) Dilution: 1:150



Immunohistochemical staining of paraffin-embedded Carcinoma of Human prostate tissue using anti-NDUFS2 mouse monoclonal antibody. ([TA802325]) Dilution: 1:150