

## Product datasheet for TA802302M

### AREB6 (ZEB1) Mouse Monoclonal Antibody [Clone ID: OT18A2]

#### Product data:

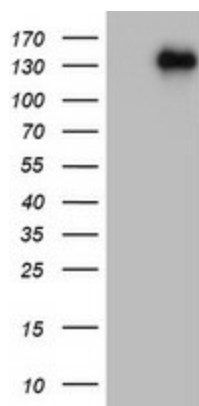
Product Type:	Primary Antibodies
Clone Name:	OT18A2
Applications:	WB
Recommended Dilution:	WB 1:2000
Reactivity:	Human, Mouse, Rat
Host:	Mouse
Isotype:	IgG2b
Clonality:	Monoclonal
Immunogen:	Human recombinant protein fragment corresponding to amino acids 1-350 of human ZEB1 (NP_110378) produced in E.coli.
Formulation:	PBS (pH 7.3) containing 1% BSA, 50% glycerol and 0.02% sodium azide.
Concentration:	1 mg/ml
Purification:	Purified from mouse ascites fluids or tissue culture supernatant by affinity chromatography (protein A/G)
Conjugation:	Unconjugated
Storage:	Store at -20°C as received.
Stability:	Stable for 12 months from date of receipt.
Predicted Protein Size:	123.9 kDa
Gene Name:	zinc finger E-box binding homeobox 1
Database Link:	<a href="#">NP_110378</a> <a href="#">Entrez Gene 21417 Mouse</a> <a href="#">Entrez Gene 25705 Rat</a> <a href="#">Entrez Gene 6935 Human</a> <a href="#">P37275</a>
Background:	This gene encodes a zinc finger transcription factor. The encoded protein likely plays a role in transcriptional repression of interleukin 2. Mutations in this gene have been associated with posterior polymorphous corneal dystrophy-3 and late-onset Fuchs endothelial corneal dystrophy. Alternatively spliced transcript variants encoding different isoforms have been described. [provided by RefSeq, Mar 2010]


[View online »](#)

**Synonyms:** AREB6; BZP; DELTAEF1; FECD6; NIL2A; PPCD3; TCF8; ZFHEP; ZFH1A

**Protein Families:** Transcription Factors

**Product images:**



HEK293T cells were transfected with the pCMV6-ENTRY control (Left lane) or pCMV6-ENTRY ZEB1 ([RC217704], Right lane) cDNA for 48 hrs and lysed. Equivalent amounts of cell lysates (5 ug per lane) were separated by SDS-PAGE and immunoblotted with anti-ZEB1. Positive lysates [LY403073] (100ug) and [LC403073] (20ug) can be purchased separately from OriGene.