

Product datasheet for **TA802282BM**

TGIF (TGIF1) Mouse Monoclonal Antibody (HRP conjugated) [Clone ID: OTI1G5]

Product data:

Product Type:	Primary Antibodies
Clone Name:	OTI1G5
Applications:	WB
Recommended Dilution:	WB 1:2000
Reactivity:	Human, Mouse, Rat
Host:	Mouse
Isotype:	IgG1
Clonality:	Monoclonal
Immunogen:	Full length human recombinant protein of human TGIF1 (NP_775300) produced in E.coli.
Formulation:	PBS (pH 7.3) containing 1% BSA, 50% glycerol.
Concentration:	0.5 mg/ml
Purification:	Purified from mouse ascites fluids or tissue culture supernatant by affinity chromatography (protein A/G)
Conjugation:	HRP
Storage:	Store at -20°C as received.
Stability:	Stable for 12 months from date of receipt.
Predicted Protein Size:	29.6 kDa
Gene Name:	TGFB induced factor homeobox 1
Database Link:	NP_775300 Entrez Gene 21815 Mouse Entrez Gene 316742 Rat Entrez Gene 7050 Human Q15583



[View online »](#)

Background:

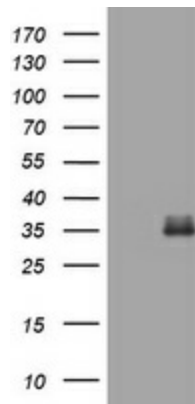
The protein encoded by this gene is a member of the three-amino acid loop extension (TALE) superclass of atypical homeodomains. TALE homeobox proteins are highly conserved transcription regulators. This particular homeodomain binds to a previously characterized retinoid X receptor responsive element from the cellular retinol-binding protein II promoter. In addition to its role in inhibiting 9-cis-retinoic acid-dependent RXR alpha transcription activation of the retinoic acid responsive element, the protein is an active transcriptional co-repressor of SMAD2 and may participate in the transmission of nuclear signals during development and in the adult. Mutations in this gene are associated with holoprosencephaly type 4, which is a structural anomaly of the brain. Alternative splicing has been observed at this locus and eight variants, encoding four distinct isoforms, are described. [provided by RefSeq, Jul 2008]

Synonyms:

HPE4; TGIF

Protein Families:

Druggable Genome, Stem cell - Pluripotency, Stem cell relevant signaling - TGFb/BMP signaling pathway, Transcription Factors

Product images:

HEK293T cells were transfected with the pCMV6-ENTRY control (Left lane) or pCMV6-ENTRY TGIF1 ([RC201549], Right lane) cDNA for 48 hrs and lysed. Equivalent amounts of cell lysates (5 ug per lane) were separated by SDS-PAGE and immunoblotted with anti-TGIF1. Positive lysates [LY406653] (100ug) and [LC406653] (20ug) can be purchased separately from OriGene.