

## Product datasheet for **TA802245AM**

### Argininosuccinate Lyase (ASL) Mouse Monoclonal Antibody (Biotin conjugated) [Clone ID: OTI3D4]

#### Product data:

Product Type:	Primary Antibodies
Clone Name:	OTI3D4
Applications:	IHC, WB
Recommended Dilution:	WB 1:2000
Reactivity:	Human, Mouse, Rat
Host:	Mouse
Isotype:	IgG2a
Clonality:	Monoclonal
Immunogen:	Full length human recombinant protein of human ASL (NP_001020114) produced in HEK293T cell.
Formulation:	PBS (pH 7.3) containing 1% BSA, 50% glycerol and 0.02% sodium azide.
Concentration:	0.5 mg/ml
Purification:	Purified from mouse ascites fluids or tissue culture supernatant by affinity chromatography (protein A/G)
Conjugation:	Biotin
Storage:	Store at -20°C as received.
Stability:	Stable for 12 months from date of receipt.
Predicted Protein Size:	51.5 kDa
Gene Name:	argininosuccinate lyase
Database Link:	<a href="#">NP_001020114</a> <a href="#">Entrez Gene 59085 Rat</a> <a href="#">Entrez Gene 109900 Mouse</a> <a href="#">Entrez Gene 435 Human</a> <a href="#">P04424</a>



[View online »](#)

**Background:**

This gene encodes a member of the lyase 1 family. The encoded protein forms a cytosolic homotetramer and primarily catalyzes the reversible hydrolytic cleavage of argininosuccinate into arginine and fumarate, an essential step in the liver in detoxifying ammonia via the urea cycle. Mutations in this gene result in the autosomal recessive disorder argininosuccinic aciduria, or argininosuccinic acid lyase deficiency. A nontranscribed pseudogene is also located on the long arm of chromosome 22. Alternatively spliced transcript variants encoding different isoforms have been described. [provided by RefSeq, Jul

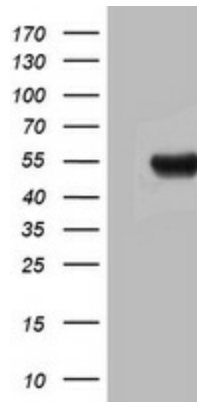
**Synonyms:**

ASAL

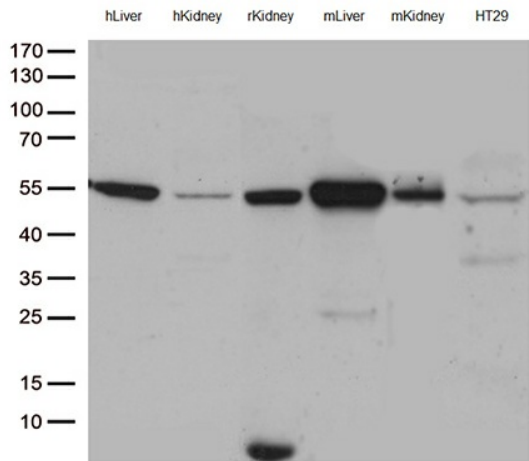
**Protein Pathways:**

Alanine, aspartate and glutamate metabolism, Arginine and proline metabolism, Metabolic pathways

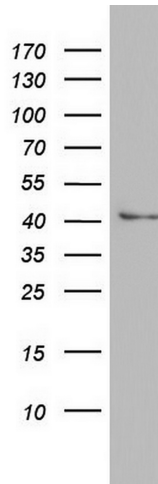
**Product images:**



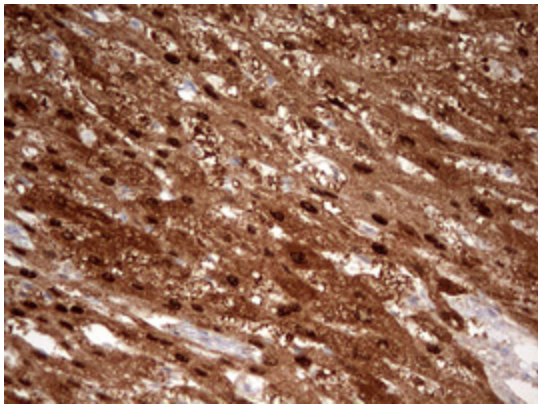
HEK293T cells were transfected with the pCMV6-ENTRY control (Cat# [PS100001], Left lane) or pCMV6-ENTRY ASL (Cat# [RC201568], Right lane) cDNA for 48 hrs and lysed. Equivalent amounts of cell lysates (5 ug per lane) were separated by SDS-PAGE and immunoblotted with anti-ASL (Cat# [TA802245]). Positive lysates [LY422562] (100ug) and [LC422562] (20ug) can be purchased separately from OriGene.



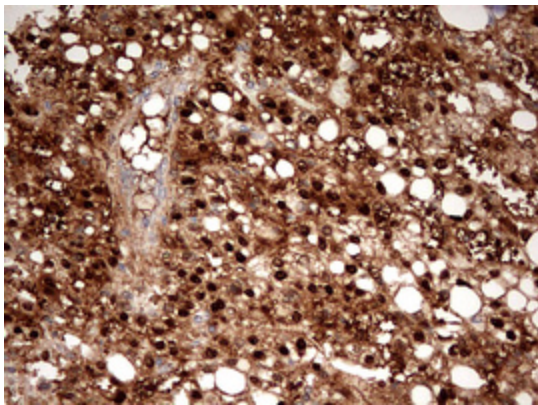
Western blot analysis of extracts (35ug) from different cell line by using anti-ASL monoclonal antibody (1:500).



Western blot analysis of HT29 cell lysate (35ug) by using anti-ASL monoclonal antibody. Dilution: 1:500



Immunohistochemical staining of paraffin-embedded Human liver tissue within the normal limits using anti-ASL mouse monoclonal antibody. ([TA802245]) Dilution: 1:150



Immunohistochemical staining of paraffin-embedded Carcinoma of Human liver tissue using anti-ASL mouse monoclonal antibody. ([TA802245]) Dilution: 1:150