

Product datasheet for **TA802240**

CD4 Mouse Monoclonal Antibody [Clone ID: OTI3C5]

Product data:

Product Type:	Primary Antibodies
Clone Name:	OTI3C5
Applications:	FC, WB
Recommended Dilution:	WB 1:2000
Reactivity:	Human
Host:	Mouse
Isotype:	IgG1
Clonality:	Monoclonal
Immunogen:	Full length human recombinant protein of human CD4 (NP_000607) produced in HEK293T cell.
Formulation:	PBS (pH 7.3) containing 1% BSA, 50% glycerol and 0.02% sodium azide.
Concentration:	1 mg/ml
Purification:	Purified from mouse ascites fluids or tissue culture supernatant by affinity chromatography (protein A/G)
Conjugation:	Unconjugated
Storage:	Store at -20°C as received.
Stability:	Stable for 12 months from date of receipt.
Predicted Protein Size:	48.3 kDa
Gene Name:	CD4 molecule
Database Link:	NP_000607 Entrez Gene 920 Human P01730



[View online »](#)

Background:

This gene encodes a membrane glycoprotein of T lymphocytes that interacts with major histocompatibility complex class II antigens and is also a receptor for the human immunodeficiency virus. This gene is expressed not only in T lymphocytes, but also in B cells, macrophages, and granulocytes. It is also expressed in specific regions of the brain. The protein functions to initiate or augment the early phase of T-cell activation, and may function as an important mediator of indirect neuronal damage in infectious and immune-mediated diseases of the central nervous system. Multiple alternatively spliced transcript variants encoding different isoforms have been identified in this gene. [provided by RefSeq, Aug 2010]

Synonyms:

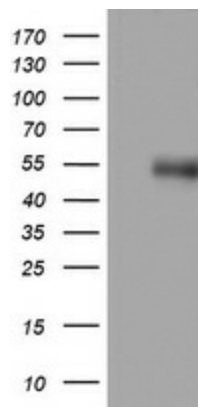
CD4mut; IMD79; OKT4D

Protein Families:

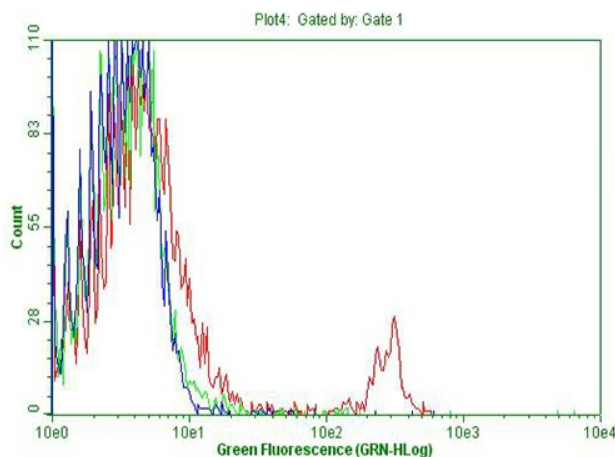
Adult stem cells, Druggable Genome, ES Cell Differentiation/IPS, Induced pluripotent stem cells, Transmembrane

Protein Pathways:

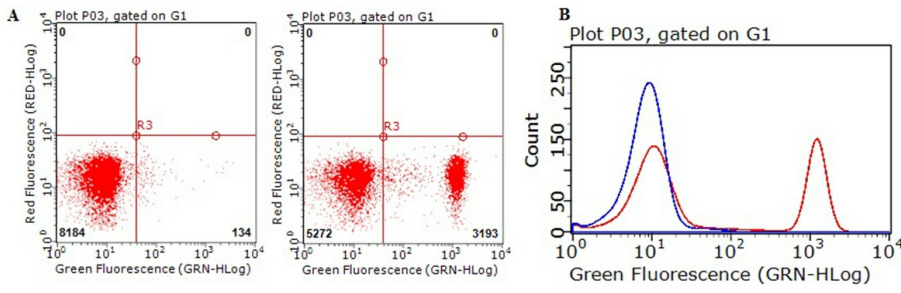
Antigen processing and presentation, Cell adhesion molecules (CAMs), Hematopoietic cell lineage, Primary immunodeficiency, T cell receptor signaling pathway

Product images:


HEK293T cells were transfected with the pCMV6-ENTRY control (Left lane) or pCMV6-ENTRY CD4 ([RC206453], Right lane) cDNA for 48 hrs and lysed. Equivalent amounts of cell lysates (5 ug per lane) were separated by SDS-PAGE and immunoblotted with anti-CD4. Positive lysates [LY400209] (100ug) and [LC400209] (20ug) can be purchased separately from OriGene.



Flow cytometric Analysis of living RBC-lysed human peripheral blood cells, using anti-CD4 antibody (TA802240, Red), compared to an IgG isotype control (green), and negative control (PBS, Blue) (1:100).



Flow cytometric Analysis of living human peripheral blood cells, using anti-CD4 antibody (TA802240, A.right, B.red), compared to an IgG isotype control (A.left, B.blue) (1:100).