

## Product datasheet for **TA802216AM**

### Mitofusin 1 (MFN1) Mouse Monoclonal Antibody (Biotin conjugated) [Clone ID: OTI3C5]

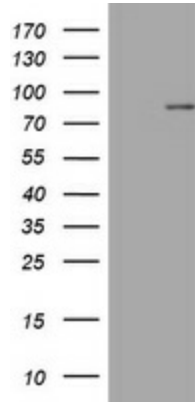
#### Product data:

Product Type:	Primary Antibodies
Clone Name:	OTI3C5
Applications:	WB
Recommended Dilution:	WB 1:2000
Reactivity:	Human, Mouse, Rat
Host:	Mouse
Isotype:	IgG1
Clonality:	Monoclonal
Immunogen:	Human recombinant protein fragment corresponding to amino acids 209-469 of human MFN1 (NP_284941) produced in E.coli.
Formulation:	PBS (pH 7.3) containing 1% BSA, 50% glycerol and 0.02% sodium azide.
Concentration:	0.5 mg/ml
Purification:	Purified from mouse ascites fluids or tissue culture supernatant by affinity chromatography (protein A/G)
Conjugation:	Biotin
Storage:	Store at -20°C as received.
Stability:	Stable for 12 months from date of receipt.
Predicted Protein Size:	84 kDa
Gene Name:	mitofusin 1
Database Link:	<a href="#">NP_284941</a> <a href="#">Entrez Gene 67414 Mouse</a> <a href="#">Entrez Gene 192647 Rat</a> <a href="#">Entrez Gene 55669 Human</a> <a href="#">Q8IWA4</a>
Background:	The protein encoded by this gene is a mediator of mitochondrial fusion. This protein and mitofusin 2 are homologs of the Drosophila protein fuzzy onion (Fzo). They are mitochondrial membrane proteins that interact with each other to facilitate mitochondrial targeting. [provided by RefSeq, Jul 2008]
Synonyms:	hfzo1; hfzo2



[View online »](#)

## Product images:



HEK293T cells were transfected with the pCMV6-ENTRY control (Left lane) or pCMV6-ENTRY MFN1 ([RC207184], Right lane) cDNA for 48 hrs and lysed. Equivalent amounts of cell lysates (5 ug per lane) were separated by SDS-PAGE and immunoblotted with anti-MFN1. Positive lysates [LY403252] (100ug) and [LC403252] (20ug) can be purchased separately from OriGene.