

Product datasheet for **TA802189**

BNIP1 Mouse Monoclonal Antibody [Clone ID: OTI3G1]

Product data:

Product Type:	Primary Antibodies
Clone Name:	OTI3G1
Applications:	WB
Recommended Dilution:	WB 1:2000
Reactivity:	Human, Mouse, Rat
Host:	Mouse
Isotype:	IgG1
Clonality:	Monoclonal
Immunogen:	Human recombinant protein fragment corresponding to amino acids 1-199 of human BNIP1 (NP_001196) produced in E.coli.
Formulation:	PBS (pH 7.3) containing 1% BSA, 50% glycerol and 0.02% sodium azide.
Concentration:	1 mg/ml
Purification:	Purified from mouse ascites fluids or tissue culture supernatant by affinity chromatography (protein A/G)
Conjugation:	Unconjugated
Storage:	Store at -20°C as received.
Stability:	Stable for 12 months from date of receipt.
Predicted Protein Size:	26 kDa
Gene Name:	BCL2/adenovirus E1B 19kDa interacting protein 1
Database Link:	NP_001196 Entrez Gene 140932 RatEntrez Gene 224630 MouseEntrez Gene 662 Human Q12981
Background:	This gene is a member of the BCL2/adenovirus E1B 19 kd-interacting protein (BNIP) family. It interacts with the E1B 19 kDa protein, which protects cells from virally-induced cell death. The encoded protein also interacts with E1B 19 kDa-like sequences of BCL2, another apoptotic protector. In addition, this protein is involved in vesicle transport into the endoplasmic reticulum. Alternative splicing of this gene results in four protein products with identical N- and C-termini. [provided by RefSeq, Mar 2011]



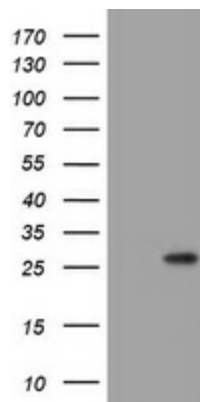
[View online »](#)

Synonyms: NIP1; SEC20; TRG-8

Protein Families: Druggable Genome, Transmembrane

Protein Pathways: SNARE interactions in vesicular transport

Product images:



HEK293T cells were transfected with the pCMV6-ENTRY control (Left lane) or pCMV6-ENTRY BNIP1 ([RC203147], Right lane) cDNA for 48 hrs and lysed. Equivalent amounts of cell lysates (5 ug per lane) were separated by SDS-PAGE and immunoblotted with anti-BNIP1. Positive lysates [LY400484] (100ug) and [LC400484] (20ug) can be purchased separately from OriGene.