

## Product datasheet for TA802185

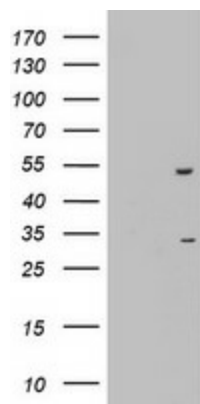
### OXSM Mouse Monoclonal Antibody [Clone ID: OTI4E10]

#### Product data:

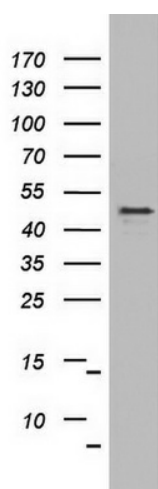
Product Type:	Primary Antibodies
Clone Name:	OTI4E10
Applications:	IHC, WB
Recommended Dilution:	WB 1:2000, IHC 1:150
Reactivity:	Human, Mouse, Rat
Host:	Mouse
Isotype:	IgG2b
Clonality:	Monoclonal
Immunogen:	Human recombinant protein fragment corresponding to amino acids 78-343 of human OXSM (NP_060367) produced in E.coli.
Formulation:	PBS (PH 7.3) containing 1% BSA, 50% glycerol and 0.02% sodium azide.
Concentration:	1 mg/ml
Purification:	Purified from mouse ascites fluids or tissue culture supernatant by affinity chromatography (protein A/G)
Storage:	Store at -20°C as received.
Stability:	Stable for 12 months from date of receipt.
Predicted Protein Size:	48.7 kDa
Gene Name:	3-oxoacyl-ACP synthase, mitochondrial
Database Link:	<a href="#">NP_060367 Entrez Gene 71147 Mouse</a> <a href="#">Entrez Gene 289934 Rat</a> <a href="#">Entrez Gene 54995 Human</a>
Background:	This gene encodes a beta-ketoacyl synthetase. The encoded enzyme is required for elongation of fatty acid chains in the mitochondria. Alternatively spliced transcript variants have been described. [provided by RefSeq, Feb 2009]
Synonyms:	FASN2D; KASI; KS
Protein Families:	Druggable Genome
Protein Pathways:	Fatty acid biosynthesis, Metabolic pathways



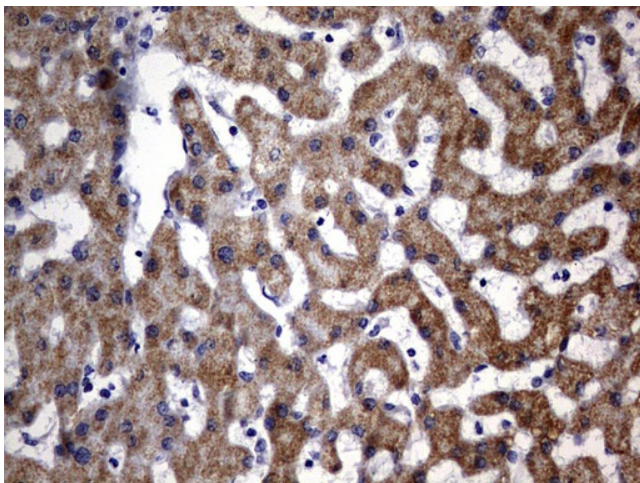
[View online »](#)

**Product images:**

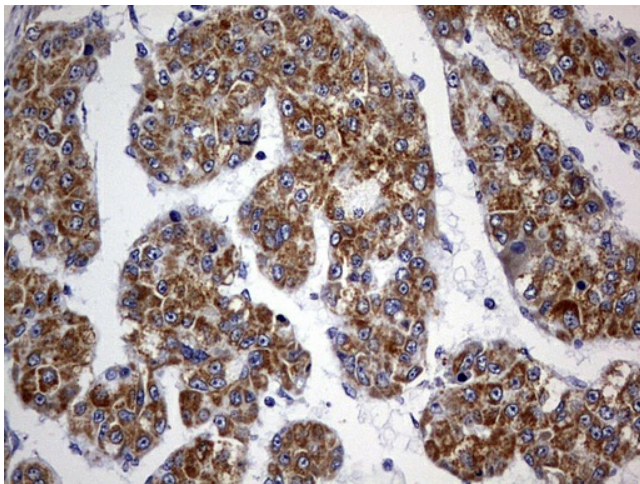
HEK293T cells were transfected with the pCMV6-ENTRY control (Left lane) or pCMV6-ENTRY OXSM ([RC201500], Right lane) cDNA for 48 hrs and lysed. Equivalent amounts of cell lysates (5 ug per lane) were separated by SDS-PAGE and immunoblotted with anti-OXSM. Positive lysates [LY413479] (100ug) and [LC413479] (20ug) can be purchased separately from OriGene.



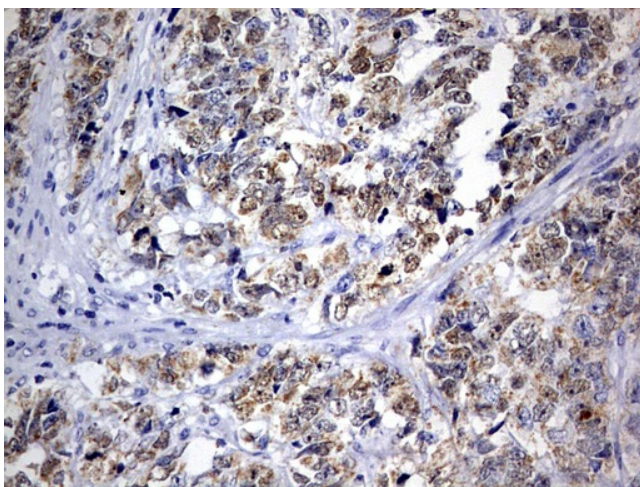
Western blot analysis of HT29 cell lysate (35ug) by using anti-OXSM monoclonal antibody. Dilution: 1:500



Immunohistochemical staining of paraffin-embedded Human liver tissue within the normal limits using anti-OXSM mouse monoclonal antibody. (Heat-induced epitope retrieval by 1 mM EDTA in 10mM Tris, pH9.0, 120°C for 3min, TA802185)



Immunohistochemical staining of paraffin-embedded Carcinoma of Human liver tissue using anti-OXSM mouse monoclonal antibody. (Heat-induced epitope retrieval by 1 mM EDTA in 10mM Tris, pH9.0, 120°C for 3min, TA802185)



Immunohistochemical staining of paraffin-embedded Adenocarcinoma of Human endometrium tissue using anti-OXSM mouse monoclonal antibody. (Heat-induced epitope retrieval by 1 mM EDTA in 10mM Tris, pH9.0, 120°C for 3min, TA802185)