

Product datasheet for **TA802183BM**

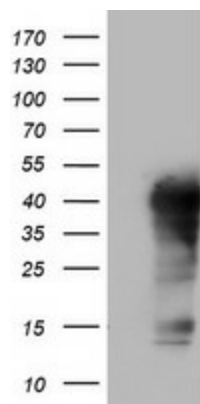
TET1 Mouse Monoclonal Antibody (HRP conjugated) [Clone ID: OTI8C3]

Product data:

Product Type:	Primary Antibodies
Clone Name:	OTI8C3
Applications:	WB
Recommended Dilution:	WB 1:2000
Reactivity:	Human
Host:	Mouse
Isotype:	IgG1
Clonality:	Monoclonal
Immunogen:	Human recombinant protein fragment corresponding to amino acids 1-305 of human TET1 (NP_085128) produced in E.coli.
Formulation:	PBS (pH 7.3) containing 1% BSA, 50% glycerol.
Concentration:	0.5 mg/ml
Purification:	Purified from mouse ascites fluids or tissue culture supernatant by affinity chromatography (protein A/G)
Conjugation:	HRP
Storage:	Store at -20°C as received.
Stability:	Stable for 12 months from date of receipt.
Gene Name:	tet methylcytosine dioxygenase 1
Database Link:	NP_085128 Entrez Gene 80312 Human Q8NFU7
Synonyms:	bA119F7.1; CXXC6; LCX



[View online »](#)

Product images:

HEK293T cells were transfected with the pCMV6-ENTRY control (Left lane) or pCMV6-ENTRY TET1 ([RC218608], Right lane) cDNA for 48 hrs and lysed. Equivalent amounts of cell lysates (5 ug per lane) were separated by SDS-PAGE and immunoblotted with anti-TET1.