

## Product datasheet for **TA802160AM**

### **NUMB Mouse Monoclonal Antibody (Biotin conjugated) [Clone ID: OTI4D3]**

#### **Product data:**

|                                |  |
|--------------------------------|--|
| <b>Product Type:</b>           | Primary Antibodies   |
| <b>Clone Name:</b>             | OTI4D3   |
| <b>Applications:</b>           | WB   |
| <b>Recommended Dilution:</b>   | WB 1:2000  |
| <b>Reactivity:</b>             | Human, Mouse, Rat  |
| <b>Host:</b>                   | Mouse  |
| <b>Isotype:</b>                | IgG1   |
| <b>Clonality:</b>              | Monoclonal   |
| <b>Immunogen:</b>              | Human recombinant protein fragment corresponding to amino acids 1-365 of human NUMB (NP_001005744) produced in E.coli.   |
| <b>Formulation:</b>            | PBS (pH 7.3) containing 1% BSA, 50% glycerol and 0.02% sodium azide.   |
| <b>Concentration:</b>          | 0.5 mg/ml  |
| <b>Purification:</b>           | Purified from mouse ascites fluids or tissue culture supernatant by affinity chromatography (protein A/G)  |
| <b>Conjugation:</b>            | Biotin   |
| <b>Storage:</b>                | Store at -20°C as received.  |
| <b>Stability:</b>              | Stable for 12 months from date of receipt.   |
| <b>Predicted Protein Size:</b> | 65.7 kDa   |
| <b>Gene Name:</b>              | NUMB, endocytic adaptor protein  |
| <b>Database Link:</b>          | <a href="#">NP_001005744</a><br><a href="#">Entrez Gene 18222 Mouse</a> <a href="#">Entrez Gene 29419 Rat</a> <a href="#">Entrez Gene 8650 Human</a><br><a href="#">P49757</a>   |
| <b>Background:</b>             | The protein encoded by this gene plays a role in the determination of cell fates during development. The encoded protein, whose degradation is induced in a proteasome-dependent manner by MDM2, is a membrane-bound protein that has been shown to associate with EPS15, LNX1, and NOTCH1. Four transcript variants encoding different isoforms have been found for this gene. [provided by RefSeq, Jul 2008] |

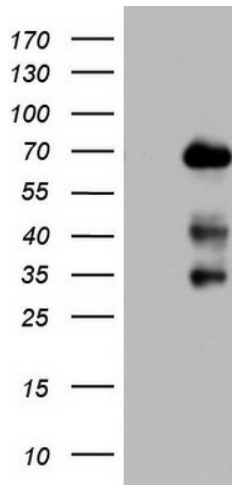


[View online »](#)

Synonyms: C14orf41; c14\_5527; S171

Protein Pathways: Notch signaling pathway

### Product images:



HEK293T cells were transfected with the pCMV6-ENTRY control (Left lane) or pCMV6-ENTRY NUMB ([RC221018], Right lane) cDNA for 48 hrs and lysed. Equivalent amounts of cell lysates (5 ug per lane) were separated by SDS-PAGE and immunoblotted with anti-NUMB. Positive lysates [LY423644] (100ug) and [LC423644] (20ug) can be purchased separately from OriGene.