

Product datasheet for **TA802157M**

NUMB Mouse Monoclonal Antibody [Clone ID: OTI4C6]

Product data:

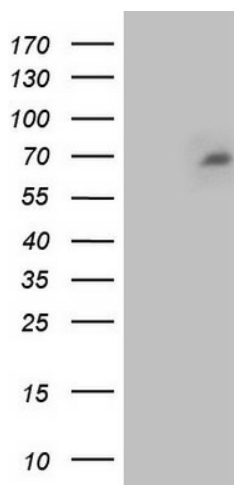
Product Type:	Primary Antibodies
Clone Name:	OTI4C6
Applications:	WB
Recommended Dilution:	WB 1:2000
Reactivity:	Human, Mouse, Rat
Host:	Mouse
Isotype:	IgG2a
Clonality:	Monoclonal
Immunogen:	Human recombinant protein fragment corresponding to amino acids 1-365 of human NUMB (NP_001005744) produced in E.coli.
Formulation:	PBS (pH 7.3) containing 1% BSA, 50% glycerol and 0.02% sodium azide.
Concentration:	1 mg/ml
Purification:	Purified from mouse ascites fluids or tissue culture supernatant by affinity chromatography (protein A/G)
Conjugation:	Unconjugated
Storage:	Store at -20°C as received.
Stability:	Stable for 12 months from date of receipt.
Predicted Protein Size:	65.7 kDa
Gene Name:	NUMB, endocytic adaptor protein
Database Link:	NP_001005744 Entrez Gene 18222 Mouse Entrez Gene 29419 Rat Entrez Gene 8650 Human P49757
Background:	The protein encoded by this gene plays a role in the determination of cell fates during development. The encoded protein, whose degradation is induced in a proteasome-dependent manner by MDM2, is a membrane-bound protein that has been shown to associate with EPS15, LNX1, and NOTCH1. Four transcript variants encoding different isoforms have been found for this gene. [provided by RefSeq, Jul 2008]


[View online »](#)

Synonyms: C14orf41; c14_5527; S171

Protein Pathways: Notch signaling pathway

Product images:



HEK293T cells were transfected with the pCMV6-ENTRY control (Left lane) or pCMV6-ENTRY NUMB ([RC221018], Right lane) cDNA for 48 hrs and lysed. Equivalent amounts of cell lysates (5 ug per lane) were separated by SDS-PAGE and immunoblotted with anti-NUMB. Positive lysates [LY423644] (100ug) and [LC423644] (20ug) can be purchased separately from OriGene.