

Product datasheet for **TA802148M**

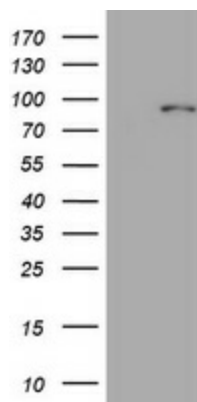
Mitofusin 1 (MFN1) Mouse Monoclonal Antibody [Clone ID: OTI4D11]

Product data:

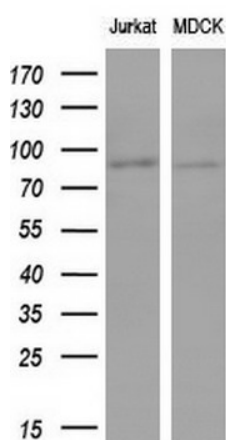
Product Type:	Primary Antibodies
Clone Name:	OTI4D11
Applications:	IHC, WB
Recommended Dilution:	WB 1:200, IHC 1:150
Reactivity:	Human, Mouse, Rat
Host:	Mouse
Isotype:	IgG1
Clonality:	Monoclonal
Immunogen:	Human recombinant protein fragment corresponding to amino acids 209-469 of human MFN1 (NP_284941) produced in E.coli.
Formulation:	PBS (pH 7.3) containing 1% BSA, 50% glycerol and 0.02% sodium azide.
Concentration:	1 mg/ml
Purification:	Purified from mouse ascites fluids or tissue culture supernatant by affinity chromatography (protein A/G)
Conjugation:	Unconjugated
Storage:	Store at -20°C as received.
Stability:	Stable for 12 months from date of receipt.
Predicted Protein Size:	84 kDa
Gene Name:	mitofusin 1
Database Link:	NP_284941 Entrez Gene 67414 Mouse Entrez Gene 192647 Rat Entrez Gene 55669 Human Q8IWA4
Background:	The protein encoded by this gene is a mediator of mitochondrial fusion. This protein and mitofusin 2 are homologs of the Drosophila protein fuzzy onion (Fzo). They are mitochondrial membrane proteins that interact with each other to facilitate mitochondrial targeting. [provided by RefSeq, Jul 2008]
Synonyms:	hfzo1; hfzo2


[View online »](#)

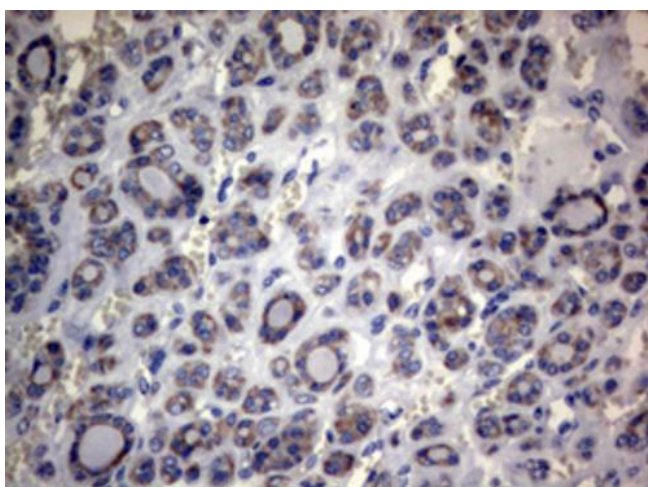
Product images:



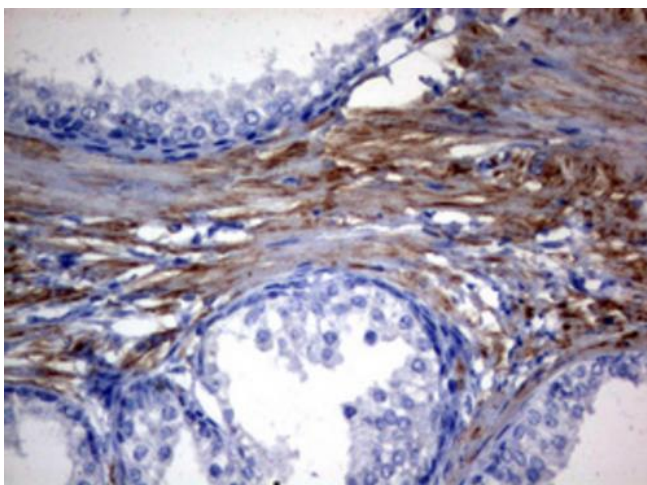
HEK293T cells were transfected with the pCMV6-ENTRY control (Cat# [PS100001], Left lane) or pCMV6-ENTRY MFN1 (Cat# [RC207184], Right lane) cDNA for 48 hrs and lysed. Equivalent amounts of cell lysates (5 ug per lane) were separated by SDS-PAGE and immunoblotted with anti-MFN1 (Cat# [TA802148]). Positive lysates [LY403252] (100ug) and [LC403252] (20ug) can be purchased separately from OriGene.



Western blot analysis of extracts (10ug) from 2 different cell lines by using anti-MFN1 monoclonal antibody (1:200).



Immunohistochemical staining of paraffin-embedded Carcinoma of Human thyroid tissue using anti-MFN1 mouse monoclonal antibody. Heat-induced epitope retrieval by EDTA solution buffer pH 8.0 at 120°C for 3 min.



Immunohistochemical staining of paraffin-embedded Human prostate tissue within the normal limits using anti-MFN1 mouse monoclonal antibody. Heat-induced epitope retrieval by EDTA solution buffer pH 8.0 at 120°C for 3 min.