

## Product datasheet for **TA802109AM**

### Smad Interacting Protein 1 (ZEB2) Mouse Monoclonal Antibody (Biotin conjugated) [Clone ID: OTI4D12]

#### Product data:

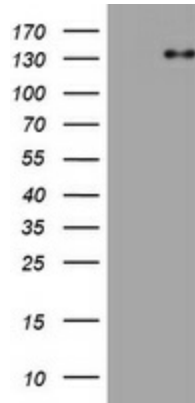
Product Type:	Primary Antibodies
Clone Name:	OTI4D12
Applications:	WB
Recommended Dilution:	WB 1:2000
Reactivity:	Human, Mouse, Rat
Host:	Mouse
Isotype:	IgG1
Clonality:	Monoclonal
Immunogen:	Human recombinant protein fragment corresponding to amino acids 1-350 of human ZEB2 (NP_055610) produced in E.coli.
Formulation:	PBS (pH 7.3) containing 1% BSA, 50% glycerol and 0.02% sodium azide.
Concentration:	0.5 mg/ml
Purification:	Purified from mouse ascites fluids or tissue culture supernatant by affinity chromatography (protein A/G)
Conjugation:	Biotin
Storage:	Store at -20°C as received.
Stability:	Stable for 12 months from date of receipt.
Gene Name:	zinc finger E-box binding homeobox 2
Database Link:	<a href="#">NP_055610</a> <a href="#">Entrez Gene 24136 Mouse</a> <a href="#">Entrez Gene 311071 Rat</a> <a href="#">Entrez Gene 9839 Human</a> <a href="#">O60315</a>
Background:	The protein encoded by this gene is a member of the Zfh1 family of 2-handed zinc finger/homeodomain proteins. It is located in the nucleus and functions as a DNA-binding transcriptional repressor that interacts with activated SMADs. Mutations in this gene are associated with Hirschsprung disease/Mowat-Wilson syndrome. Alternatively spliced transcript variants have been found for this gene. [provided by RefSeq, Jan 2010]
Synonyms:	HSPC082; SIP-1; SIP1; SMADIP1; ZFH1B



[View online »](#)

Protein Families: Druggable Genome, Transcription Factors

**Product images:**



HEK293T cells were transfected with the pCMV6-ENTRY control (Left lane) or pCMV6-ENTRY ZEB2 ([RC215227], Right lane) cDNA for 48 hrs and lysed. Equivalent amounts of cell lysates (5 ug per lane) were separated by SDS-PAGE and immunoblotted with anti-ZEB2.