

## Product datasheet for **TA802095**

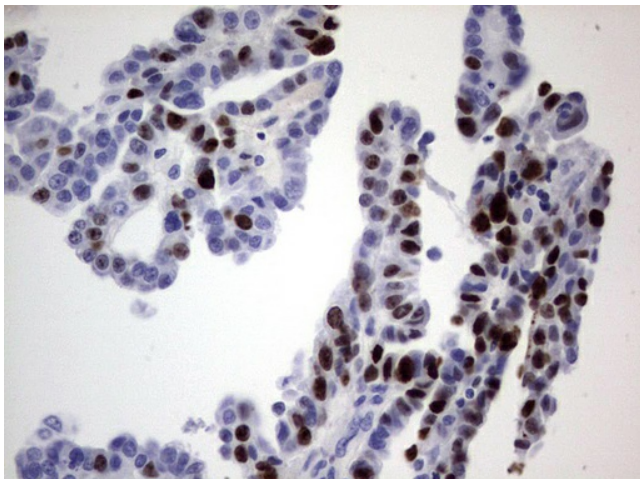
### **Ki67 (MKI67) Rat Monoclonal Antibody [Clone ID: OTI6C12]**

#### **Product data:**

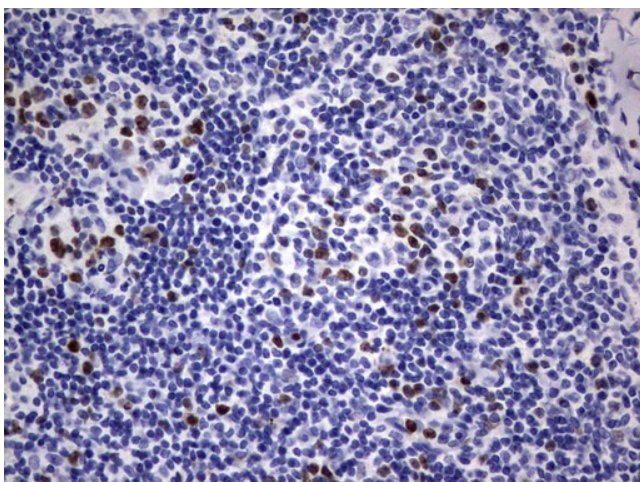
Product Type:	Primary Antibodies
Clone Name:	OTI6C12
Applications:	IHC
Recommended Dilution:	IHC 1:150
Reactivity:	Human
Host:	Rat
Isotype:	IgG2a
Clonality:	Monoclonal
Immunogen:	Human recombinant protein fragment corresponding to amino acids 1160-1493 of human MKI67 (NP_002408) produced in E.coli.
Formulation:	PBS (pH 7.3) containing 1% BSA, 50% glycerol and 0.02% sodium azide.
Concentration:	1 mg/ml
Purification:	Purified from mouse ascites fluids or tissue culture supernatant by affinity chromatography (protein A/G)
Conjugation:	Unconjugated
Storage:	Store at -20°C as received.
Stability:	Stable for 12 months from date of receipt.
Gene Name:	marker of proliferation Ki-67
Database Link:	<a href="#">NP_002408</a> <a href="#">Entrez Gene 4288 Human</a> <a href="#">P46013</a>
Synonyms:	KIA; MIB-; MIB-1; PPP1R105
Protein Families:	Druggable Genome, ES Cell Differentiation/IPS



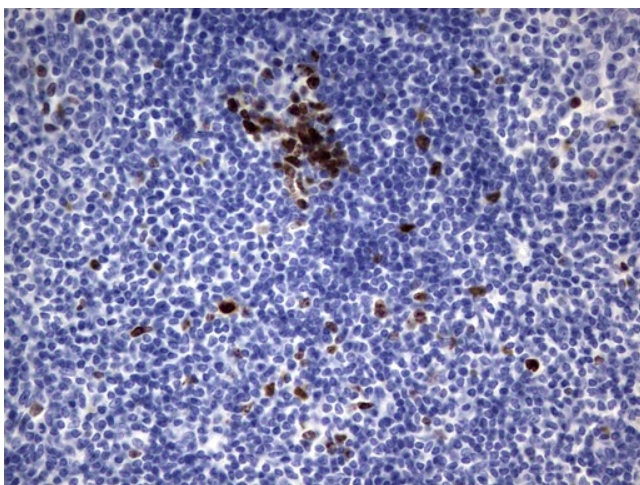
[View online »](#)

**Product images:**

Immunohistochemical staining of paraffin-embedded Adenocarcinoma of Human ovary tissue using anti-MKI67 rat monoclonal antibody. (TA802095; heat-induced epitope retrieval by 1mM EDTA in 10mM Tris, pH8.5, 120°C for 3min)



Immunohistochemical staining of paraffin-embedded Human lymph node tissue within the normal limits using anti-MKI67 rat monoclonal antibody. (TA802095; heat-induced epitope retrieval by 1mM EDTA in 10mM Tris, pH8.5, 120°C for 3min)



Immunohistochemical staining of paraffin-embedded Human tonsil within the normal limits using anti-MKI67 rat monoclonal antibody. (TA802095; heat-induced epitope retrieval by 1mM EDTA in 10mM Tris, pH8.5, 120°C for 3min)