

Product datasheet for **TA802093AM**

Hamartin (TSC1) Mouse Monoclonal Antibody (Biotin conjugated) [Clone ID: OTI5A7]

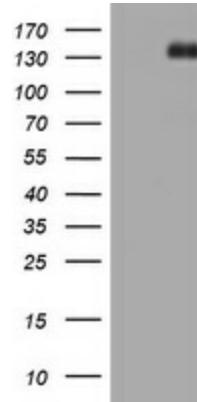
Product data:

Product Type:	Primary Antibodies
Clone Name:	OTI5A7
Applications:	WB
Recommended Dilution:	WB 1:2000
Reactivity:	Human, Mouse, Rat
Host:	Mouse
Isotype:	IgG2a
Clonality:	Monoclonal
Immunogen:	Human recombinant protein fragment corresponding to amino acids 836-1164 of human TSC1 (NP_000359) produced in E.coli.
Formulation:	PBS (pH 7.3) containing 1% BSA, 50% glycerol and 0.02% sodium azide.
Concentration:	0.5 mg/ml
Purification:	Purified from mouse ascites fluids or tissue culture supernatant by affinity chromatography (protein A/G)
Conjugation:	Biotin
Storage:	Store at -20°C as received.
Stability:	Stable for 12 months from date of receipt.
Predicted Protein Size:	129.6 kDa
Gene Name:	tuberous sclerosis 1
Database Link:	NP_000359 Entrez Gene 60445 Rat Entrez Gene 64930 Mouse Entrez Gene 7248 Human Q92574
Background:	This gene encodes a growth inhibitory protein thought to play a role in the stabilization of tuberin. Mutations in this gene have been associated with tuberous sclerosis. Alternative splicing results in multiple transcript variants. [provided by RefSeq, Jun]
Synonyms:	LAM; TSC
Protein Pathways:	Insulin signaling pathway, mTOR signaling pathway



[View online »](#)

Product images:



HEK293T cells were transfected with the pCMV6-ENTRY control (Left lane) or pCMV6-ENTRY TSC1 ([RC213332], Right lane) cDNA for 48 hrs and lysed. Equivalent amounts of cell lysates (5 ug per lane) were separated by SDS-PAGE and immunoblotted with anti-TSC1. Positive lysates [LY400132] (100ug) and [LC400132] (20ug) can be purchased separately from OriGene.