

## Product datasheet for **TA802077S**

### **Kallikrein 2 (KLK2) Mouse Monoclonal Antibody [Clone ID: OTI5D6]**

#### **Product data:**

Product Type:	Primary Antibodies
Clone Name:	OTI5D6
Applications:	IHC, WB
Recommended Dilution:	WB 1:2000, IHC 1:150
Reactivity:	Human
Host:	Mouse
Isotype:	IgG2b
Clonality:	Monoclonal
Immunogen:	Human recombinant protein fragment corresponding to amino acids 25-261 of human KLK2 (NP_005542) produced in SF9 cell.
Formulation:	PBS (pH 7.3) containing 1% BSA, 50% glycerol and 0.02% sodium azide.
Concentration:	1 mg/ml
Purification:	Purified from mouse ascites fluids or tissue culture supernatant by affinity chromatography (protein A/G)
Conjugation:	Unconjugated
Storage:	Store at -20°C as received.
Stability:	Stable for 12 months from date of receipt.
Predicted Protein Size:	28.5 kDa
Gene Name:	kallikrein related peptidase 2
Database Link:	<a href="#">NP_005542</a> <a href="#">Entrez Gene 3817 Human</a> <a href="#">P20151</a>



[View online »](#)

**Background:**

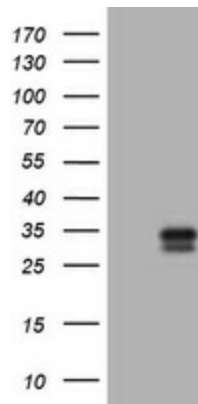
This gene encodes a member of the grandular kallikrein protein family. Kallikreins are a subgroup of serine proteases that are clustered on chromosome 19. Members of this family are involved in a diverse array of biological functions. The protein encoded by this gene is a highly active trypsin-like serine protease that selectively cleaves at arginine residues. This protein is primarily expressed in prostatic tissue and is responsible for cleaving pro-prostate-specific antigen into its enzymatically active form. This gene is highly expressed in prostate tumor cells and may be a prognostic maker for prostate cancer risk. Alternate splicing results in both coding and non-coding transcript variants. [provided by RefSeq, Jan 2012]

**Synonyms:**

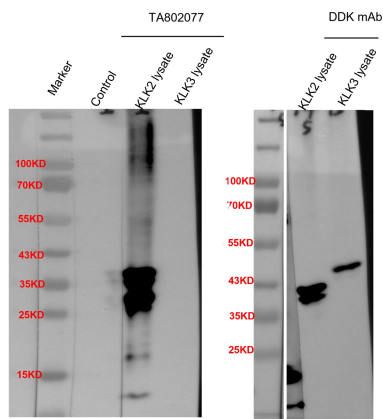
hGK-1; hK2; KLK2A2

**Protein Families:**

Druggable Genome, Protease

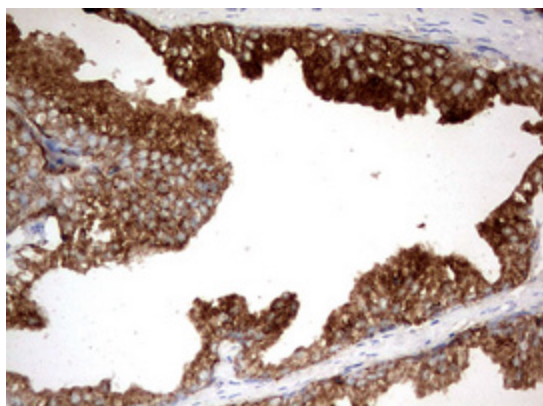
**Product images:**


HEK293T cells were transfected with the pCMV6-ENTRY control (Cat# [PS100001], Left lane) or pCMV6-ENTRY KLK2 (Cat# [RC202667], Right lane) cDNA for 48 hrs and lysed. Equivalent amounts of cell lysates (5 ug per lane) were separated by SDS-PAGE and immunoblotted with anti-KLK2 (Cat# [TA802077]). Positive lysates [LY417229] (100ug) and [LC417229] (20ug) can be purchased separately from OriGene.



KLK2 lysate: RC202667  
KLK3 lysate: RC202740

Western blot analyses for the cross-reactivity between KLK2 and KLK3 overexpression lysate. The results indicate that KLK3 overexpressed lysate is not getting detected by the anti-KLK2 antibody ([TA802077])



Immunohistochemical staining of paraffin-embedded Human prostate tissue within the normal limits using anti-KLK2 mouse monoclonal antibody. (Heat-induced epitope retrieval by 10mM citric buffer, pH6.0, 120°C for 3min, [TA802077])