

Product datasheet for **TA802077BM**

Kallikrein 2 (KLK2) Mouse Monoclonal Antibody (HRP conjugated) [Clone ID: OTI5D6]

Product data:

| | |
|-------------------------|--|
| Product Type: | Primary Antibodies |
| Clone Name: | OTI5D6 |
| Applications: | IHC, WB |
| Recommended Dilution: | WB 1:2000, IHC 1:150 |
| Reactivity: | Human |
| Host: | Mouse |
| Isotype: | IgG2b |
| Clonality: | Monoclonal |
| Immunogen: | Human recombinant protein fragment corresponding to amino acids 25-261 of human KLK2 (NP_005542) produced in SF9 cell. |
| Formulation: | PBS (pH 7.3) containing 1% BSA, 50% glycerol. |
| Concentration: | 0.5 mg/ml |
| Purification: | Purified from mouse ascites fluids or tissue culture supernatant by affinity chromatography (protein A/G) |
| Conjugation: | HRP |
| Storage: | Store at -20°C as received. |
| Stability: | Stable for 12 months from date of receipt. |
| Predicted Protein Size: | 28.5 kDa |
| Gene Name: | kallikrein related peptidase 2 |
| Database Link: | NP_005542 Entrez Gene 3817 Human P20151 |



[View online »](#)

Background:

This gene encodes a member of the grandular kallikrein protein family. Kallikreins are a subgroup of serine proteases that are clustered on chromosome 19. Members of this family are involved in a diverse array of biological functions. The protein encoded by this gene is a highly active trypsin-like serine protease that selectively cleaves at arginine residues. This protein is primarily expressed in prostatic tissue and is responsible for cleaving pro-prostate-specific antigen into its enzymatically active form. This gene is highly expressed in prostate tumor cells and may be a prognostic maker for prostate cancer risk. Alternate splicing results in both coding and non-coding transcript variants. [provided by RefSeq, Jan 2012]

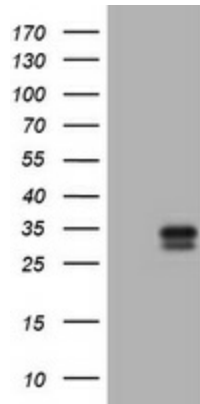
Synonyms:

hGK-1; hK2; KLK2A2

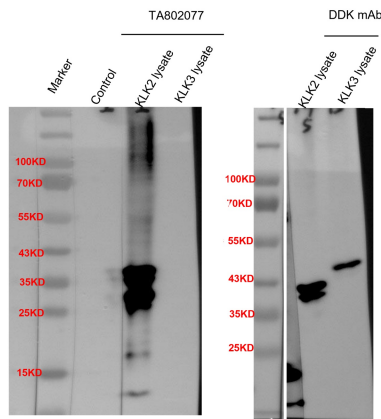
Protein Families:

Druggable Genome, Protease

Product images:

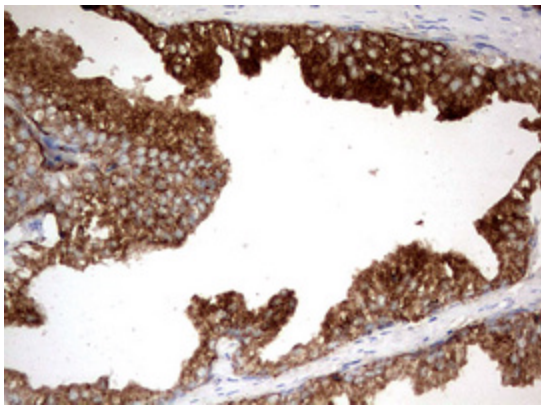


HEK293T cells were transfected with the pCMV6-ENTRY control (Cat# [PS100001], Left lane) or pCMV6-ENTRY KLK2 (Cat# [RC202667], Right lane) cDNA for 48 hrs and lysed. Equivalent amounts of cell lysates (5 ug per lane) were separated by SDS-PAGE and immunoblotted with anti-KLK2 (Cat# [TA802077]). Positive lysates [LY417229] (100ug) and [LC417229] (20ug) can be purchased separately from OriGene.



KLK2 lysate: RC202667
KLK3 lysate: RC202740

Western blot analyses for the cross-reactivity between KLK2 and KLK3 overexpression lysate. The results indicate that KLK3 overexpressed lysate is not getting detected by the anti-KLK2 antibody ([TA802077])



Immunohistochemical staining of paraffin-embedded Human prostate tissue within the normal limits using anti-KLK2 mouse monoclonal antibody. (Heat-induced epitope retrieval by 10mM citric buffer, pH6.0, 120°C for 3min, [TA802077])