

Product datasheet for **TA802042**

EGFR Mouse Monoclonal Antibody [Clone ID: OTI3D7]

Product data:

Product Type:	Primary Antibodies
Clone Name:	OTI3D7
Applications:	WB
Recommended Dilution:	WB 1:2000
Reactivity:	Human, Mouse, Rat
Host:	Mouse
Isotype:	IgG1
Clonality:	Monoclonal
Immunogen:	Human recombinant protein fragment corresponding to amino acids 900-1210 of human EGFR (NP_005219) produced in E.coli.
Formulation:	PBS (pH 7.3) containing 1% BSA, 50% glycerol and 0.02% sodium azide.
Concentration:	1 mg/ml
Purification:	Purified from mouse ascites fluids or tissue culture supernatant by affinity chromatography (protein A/G)
Conjugation:	Unconjugated
Storage:	Store at -20°C as received.
Stability:	Stable for 12 months from date of receipt.
Gene Name:	epidermal growth factor receptor
Database Link:	NP_005219 Entrez Gene 13649 Mouse Entrez Gene 24329 Rat Entrez Gene 1956 Human P00533
Background:	The protein encoded by this gene is a transmembrane glycoprotein that is a member of the protein kinase superfamily. This protein is a receptor for members of the epidermal growth factor family. EGFR is a cell surface protein that binds to epidermal growth factor. Binding of the protein to a ligand induces receptor dimerization and tyrosine autophosphorylation and leads to cell proliferation. Mutations in this gene are associated with lung cancer. Multiple alternatively spliced transcript variants that encode different protein isoforms have been found for this gene. [provided by RefSeq, Jul 2010]



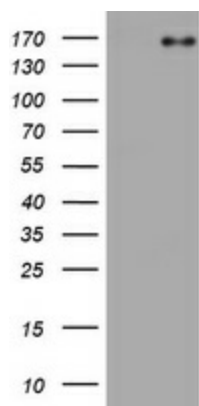
[View online »](#)

Synonyms: ERBB; ERBB1; ERBP; HER1; mENA; NISBD2; PIG61

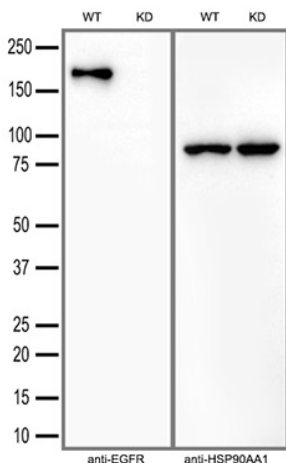
Protein Families: Adult stem cells, Cancer stem cells, Druggable Genome, ES Cell Differentiation/IPS, Protein Kinase, Secreted Protein, Stem cell relevant signaling - JAK/STAT signaling pathway, Transmembrane

Protein Pathways: Adherens junction, Bladder cancer, Calcium signaling pathway, Colorectal cancer, Cytokine-cytokine receptor interaction, Dorso-ventral axis formation, Endocytosis, Endometrial cancer, Epithelial cell signaling in Helicobacter pylori infection, ErbB signaling pathway, Focal adhesion, Gap junction, Glioma, GnRH signaling pathway, MAPK signaling pathway, Melanoma, Non-small cell lung cancer, Pancreatic cancer, Pathways in cancer, Prostate cancer, Regulation of actin cytoskeleton

Product images:



HEK293T cells were transfected with the pCMV6-ENTRY control (Left lane) or pCMV6-ENTRY EGFR ([RC217384], Right lane) cDNA for 48 hrs and lysed. Equivalent amounts of cell lysates (5 ug per lane) were separated by SDS-PAGE and immunoblotted with anti-EGFR. Positive lysates [LY417434] (100ug) and [LC417434] (20ug) can be purchased separately from OriGene.



Equivalent amounts of cell lysates (30 ug per lane) of wild-type HepG2 cells(WT) and EGFR-Knockdown HepG2 cells(KD) were separated by SDS-PAGE and immunoblotted with anti-EGFR monoclonal antibody TA802042(1:5000).Then the blotted membrane was stripped and reprobed with anti-HSP90AA1 antibody as a loading control.