

## Product datasheet for **TA801976M**

### **PAX4 Mouse Monoclonal Antibody [Clone ID: OTI2F3]**

#### **Product data:**

Product Type:	Primary Antibodies
Clone Name:	OTI2F3
Applications:	WB
Recommended Dilution:	WB 1:2000
Reactivity:	Human
Host:	Mouse
Isotype:	IgG2a
Clonality:	Monoclonal
Immunogen:	Human recombinant protein fragment corresponding to amino acids 1-228 of human PAX4 (NP_006184) produced in E.coli.
Formulation:	PBS (pH 7.3) containing 1% BSA, 50% glycerol and 0.02% sodium azide.
Concentration:	1 mg/ml
Purification:	Purified from mouse ascites fluids or tissue culture supernatant by affinity chromatography (protein A/G)
Conjugation:	Unconjugated
Storage:	Store at -20°C as received.
Stability:	Stable for 12 months from date of receipt.
Predicted Protein Size:	36.9 kDa
Gene Name:	paired box 4
Database Link:	<a href="#">NP_006184</a> <a href="#">Entrez Gene 5078 Human</a> <a href="#">O43316</a>
Background:	<p>This gene is a member of the paired box (PAX) family of transcription factors. Members of this gene family typically contain a paired box domain, an octapeptide, and a paired-type homeodomain. These genes play critical roles during fetal development and cancer growth. The paired box 4 gene is involved in pancreatic islet development and mouse studies have demonstrated a role for this gene in differentiation of insulin-producing beta cells. [provided by RefSeq, Jul 2008]</p>

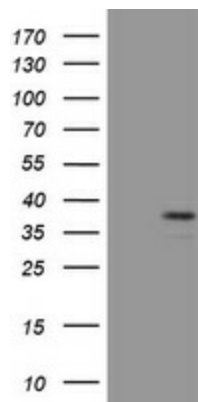

[View online »](#)

**Synonyms:** KPD; MODY9

**Protein Families:** Embryonic stem cells, ES Cell Differentiation/IPS, Transcription Factors

**Protein Pathways:** Maturity onset diabetes of the young

### Product images:



HEK293T cells were transfected with the pCMV6-ENTRY control (Cat# [PS100001], Left lane) or pCMV6-ENTRY PAX4 (Cat# [RC210370], Right lane) cDNA for 48 hrs and lysed. Equivalent amounts of cell lysates (5 ug per lane) were separated by SDS-PAGE and immunoblotted with anti-PAX4 (Cat# [TA801976]).