

## Product datasheet for **TA801969S**

### **PAX5 Mouse Monoclonal Antibody [Clone ID: OTI4F9]**

#### **Product data:**

Product Type:	Primary Antibodies
Clone Name:	OTI4F9
Applications:	IHC, WB
Recommended Dilution:	WB 1:2000, IHC 1:150
Reactivity:	Human, Mouse, Rat
Host:	Mouse
Isotype:	IgG2a
Clonality:	Monoclonal
Immunogen:	Full length human recombinant protein of human PAX5 (NP_057953) produced in E.coli.
Formulation:	PBS (pH 7.3) containing 1% BSA, 50% glycerol and 0.02% sodium azide.
Concentration:	1 mg/ml
Purification:	Purified from mouse ascites fluids or tissue culture supernatant by affinity chromatography (protein A/G)
Conjugation:	Unconjugated
Storage:	Store at -20°C as received.
Stability:	Stable for 12 months from date of receipt.
Predicted Protein Size:	42 kDa
Gene Name:	paired box 5
Database Link:	<a href="#">NP_057953</a> <a href="#">Entrez Gene 18507 Mouse</a> <a href="#">Entrez Gene 500453 Rat</a> <a href="#">Entrez Gene 5079 Human</a> <a href="#">Q02548</a>



[View online »](#)

**Background:**

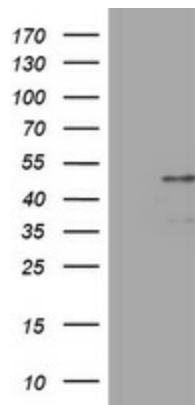
This gene encodes a member of the paired box (PAX) family of transcription factors. The central feature of this gene family is a novel, highly conserved DNA-binding motif, known as the paired box. PAX proteins are important regulators in early development, and alterations in the expression of their genes are thought to contribute to neoplastic transformation. This gene encodes the B-cell lineage specific activator protein that is expressed at early, but not late stages of B-cell differentiation. Its expression has also been detected in developing CNS and testis and so the encoded protein may also play a role in neural development and spermatogenesis. This gene is located at 9p13, which is involved in t(9;14)(p13;q32) translocations recurring in small lymphocytic lymphomas of the plasmacytoid subtype, and in derived large-cell lymphomas. This translocation brings the potent E-mu enhancer of the IgH gene into close proximity of the PAX5 promoter, suggesting that the deregulation of transcription of this gene contributes to the pathogenesis of these lymphomas. Alternatively spliced transcript variants encoding different isoforms have been described but their biological validity has not been determined. [provided by RefSeq, Jul 2008]

**Synonyms:**

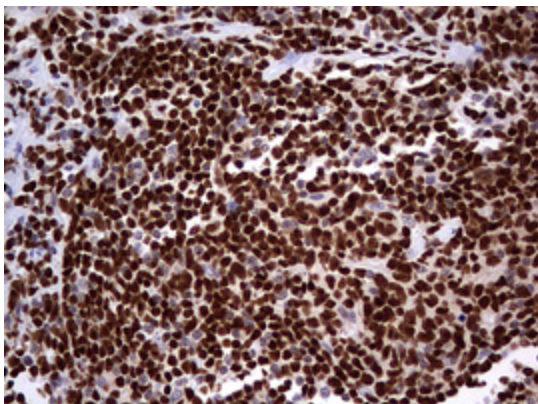
ALL3; BSAP

**Protein Families:**

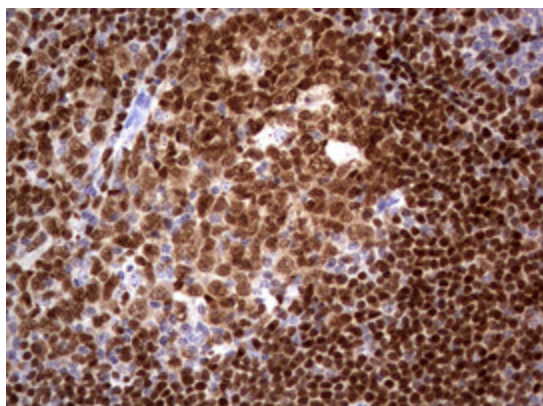
Transcription Factors

**Product images:**

HEK293T cells were transfected with the pCMV6-ENTRY control (Left lane) or pCMV6-ENTRY PAX5 ([RC222785], Right lane) cDNA for 48 hrs and lysed. Equivalent amounts of cell lysates (5 ug per lane) were separated by SDS-PAGE and immunoblotted with anti-PAX5. Positive lysates [LY413830] (100ug) and [LC413830] (20ug) can be purchased separately from OriGene.



Immunohistochemical staining of paraffin-embedded Human Lymphoma tissue using anti-PAX5 mouse monoclonal antibody. (Heat-induced epitope retrieval by 10mM citric buffer, pH6.0, 120°C for 3min, [TA801969])



Immunohistochemical staining of paraffin-embedded Human tonsil within the normal limits using anti-PAX5 mouse monoclonal antibody. (Heat-induced epitope retrieval by 10mM citric buffer, pH6.0, 120°C for 3min, [TA801969])