

Product datasheet for **TA801951BM**

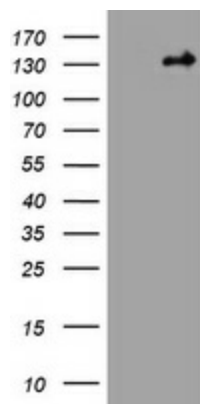
Hamartin (TSC1) Mouse Monoclonal Antibody (HRP conjugated) [Clone ID: OTI5A8]

Product data:

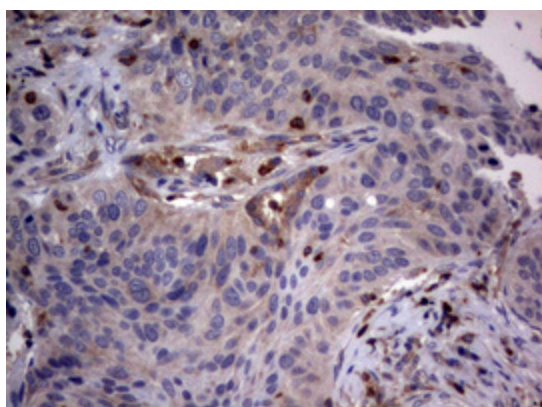
Product Type:	Primary Antibodies
Clone Name:	OTI5A8
Applications:	IHC, WB
Recommended Dilution:	WB 1:2000, IHC 1:150
Reactivity:	Human, Mouse, Rat
Host:	Mouse
Isotype:	IgG2b
Clonality:	Monoclonal
Immunogen:	Human recombinant protein fragment corresponding to amino acids 836-1164 of human TSC1 (NP_000359) produced in E.coli.
Formulation:	PBS (pH 7.3) containing 1% BSA, 50% glycerol.
Concentration:	0.5 mg/ml
Purification:	Purified from mouse ascites fluids or tissue culture supernatant by affinity chromatography (protein A/G)
Conjugation:	HRP
Storage:	Store at -20°C as received.
Stability:	Stable for 12 months from date of receipt.
Predicted Protein Size:	129.6 kDa
Gene Name:	tuberous sclerosis 1
Database Link:	NP_000359 Entrez Gene 60445 Rat Entrez Gene 64930 Mouse Entrez Gene 7248 Human Q92574
Background:	This gene encodes a growth inhibitory protein thought to play a role in the stabilization of tuberin. Mutations in this gene have been associated with tuberous sclerosis. Alternative splicing results in multiple transcript variants. [provided by RefSeq, Jun
Synonyms:	LAM; TSC
Protein Pathways:	Insulin signaling pathway, mTOR signaling pathway



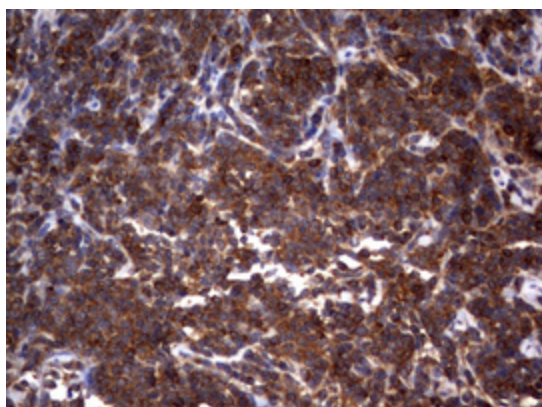
[View online »](#)

Product images:

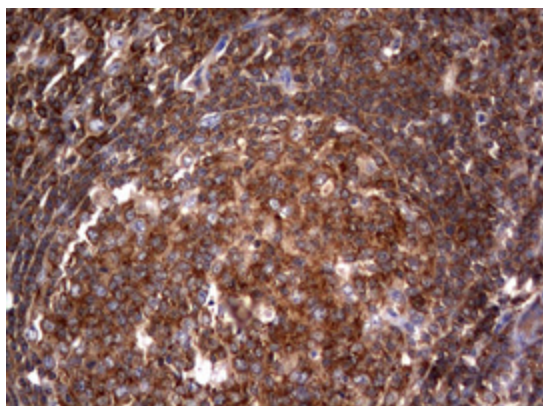
HEK293T cells were transfected with the pCMV6-ENTRY control (Left lane) or pCMV6-ENTRY TSC1 ([RC213332], Right lane) cDNA for 48 hrs and lysed. Equivalent amounts of cell lysates (5 ug per lane) were separated by SDS-PAGE and immunoblotted with anti-TSC1. Positive lysates [LY400132] (100ug) and [LC400132] (20ug) can be purchased separately from OriGene.



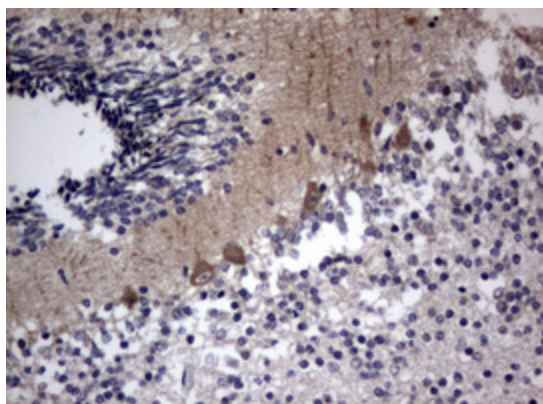
Immunohistochemical staining of paraffin-embedded Carcinoma of Human lung tissue using anti-TSC1 mouse monoclonal antibody. (Heat-induced epitope retrieval by 10mM citric buffer, pH6.0, 120°C for 3min, [TA801951])



Immunohistochemical staining of paraffin-embedded Human lymphoma tissue using anti-TSC1 mouse monoclonal antibody. (Heat-induced epitope retrieval by 10mM citric buffer, pH6.0, 120°C for 3min, [TA801951])



Immunohistochemical staining of paraffin-embedded Human tonsil within the normal limits using anti-TSC1 mouse monoclonal antibody. (Heat-induced epitope retrieval by 10mM citric buffer, pH6.0, 120°C for 3min, [TA801951])



Immunohistochemical staining of paraffin-embedded Human embryonic cerebellum using anti-TSC1 mouse monoclonal antibody. (Heat-induced epitope retrieval by 10mM citric buffer, pH6.0, 120°C for 3min, [TA801951])