

Product datasheet for TA801920

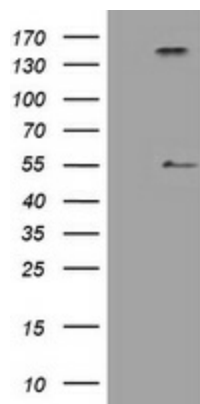
Inhibin alpha (INHA) Mouse Monoclonal Antibody [Clone ID: OTI12F11]

Product data:

Product Type:	Primary Antibodies
Clone Name:	OTI12F11
Applications:	WB
Recommended Dilution:	WB 1:2000
Reactivity:	Human
Host:	Mouse
Isotype:	IgG1
Clonality:	Monoclonal
Immunogen:	Human recombinant protein fragment corresponding to amino acids 62-232 of human INHA (NP_002182) produced in E.coli.
Formulation:	PBS (PH 7.3) containing 1% BSA, 50% glycerol and 0.02% sodium azide.
Concentration:	1 mg/ml
Purification:	Purified from mouse ascites fluids or tissue culture supernatant by affinity chromatography (protein A/G)
Storage:	Store at -20°C as received.
Stability:	Stable for 12 months from date of receipt.
Predicted Protein Size:	14.7 kDa
Gene Name:	inhibin alpha subunit
Database Link:	NP_002182 Entrez Gene 3623 Human
Background:	This gene encodes the alpha subunit of inhibins A and B protein complexes. These complexes negatively regulate follicle stimulating hormone secretion from the pituitary gland. Inhibins have also been implicated in regulating numerous cellular processes including cell proliferation, apoptosis, immune response and hormone secretion. [provided by RefSeq, Dec 2010]
Synonyms:	A-inhibin subunit; alpha; inhibin; inhibin alpha subunit
Protein Families:	Druggable Genome, Secreted Protein



[View online »](#)

Product images:

HEK293T cells were transfected with the pCMV6-ENTRY control (Left lane) or pCMV6-ENTRY INHA ([RC202819], Right lane) cDNA for 48 hrs and lysed. Equivalent amounts of cell lysates (5 ug per lane) were separated by SDS-PAGE and immunoblotted with anti-INHA. Positive lysates [LY419480] (100ug) and [LC419480] (20ug) can be purchased separately from OriGene.