

Product datasheet for **TA801891**

PIK3CD Mouse Monoclonal Antibody [Clone ID: OTI2H3]

Product data:

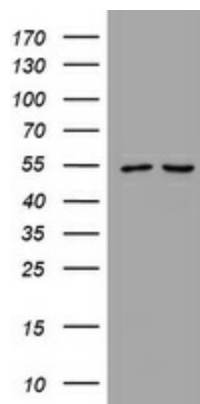
Product Type:	Primary Antibodies
Clone Name:	OTI2H3
Applications:	IHC, WB
Recommended Dilution:	WB 1:500, IHC 1:150
Reactivity:	Human, Mouse, Rat
Host:	Mouse
Isotype:	IgG2a
Clonality:	Monoclonal
Immunogen:	Human recombinant protein fragment corresponding to amino acids 286-610 of human PIK3CD (NP_005017) produced in E.coli.
Formulation:	PBS (PH 7.3) containing 1% BSA, 50% glycerol and 0.02% sodium azide.
Concentration:	1 mg/ml
Purification:	Purified from mouse ascites fluids or tissue culture supernatant by affinity chromatography (protein A/G)
Storage:	Store at -20°C as received.
Stability:	Stable for 12 months from date of receipt.
Predicted Protein Size:	119.3 kDa
Gene Name:	phosphatidylinositol-4,5-bisphosphate 3-kinase catalytic subunit delta
Database Link:	NP_005017 Entrez Gene 18707 MouseEntrez Gene 366508 RatEntrez Gene 5293 Human
Background:	Phosphoinositide 3-kinases (PI3Ks) phosphorylate inositol lipids and are involved in the immune response. The protein encoded by this gene is a class I PI3K found primarily in leukocytes. Like other class I PI3Ks (p110-alpha p110-beta, and p110-gamma), the encoded protein binds p85 adapter proteins and GTP-bound RAS. However, unlike the other class I PI3Ks, this protein phosphorylates itself, not p85 protein. [provided by RefSeq, Jul
Synonyms:	APDS; IMD14; p110D; P110DELTA; PI3K
Protein Families:	Druggable Genome



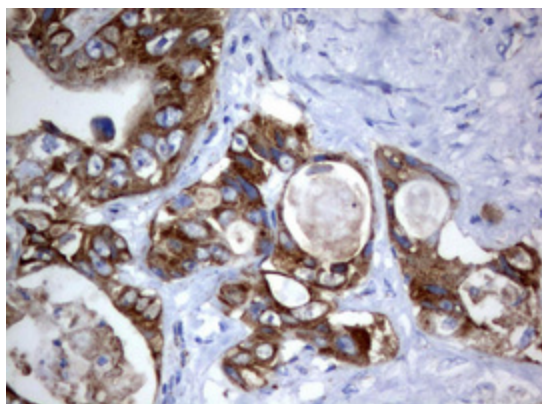
[View online »](#)

Protein Pathways:

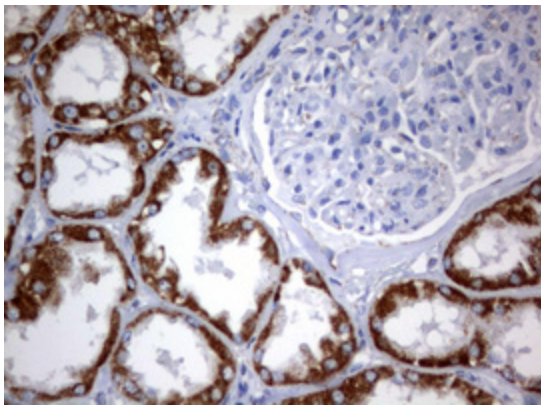
Acute myeloid leukemia, Apoptosis, B cell receptor signaling pathway, Chemokine signaling pathway, Chronic myeloid leukemia, Colorectal cancer, Endometrial cancer, ErbB signaling pathway, Fc epsilon RI signaling pathway, Fc gamma R-mediated phagocytosis, Focal adhesion, Glioma, Inositol phosphate metabolism, Insulin signaling pathway, Jak-STAT signaling pathway, Leukocyte transendothelial migration, Melanoma, mTOR signaling pathway, Natural killer cell mediated cytotoxicity, Neurotrophin signaling pathway, Non-small cell lung cancer, Pancreatic cancer, Pathways in cancer, Phosphatidylinositol signaling system, Progesterone-mediated oocyte maturation, Prostate cancer, Regulation of actin cytoskeleton, Renal cell carcinoma, Small cell lung cancer, T cell receptor signaling pathway, Toll-like receptor signaling pathway, Type II diabetes mellitus, VEGF signaling pathway

Product images:

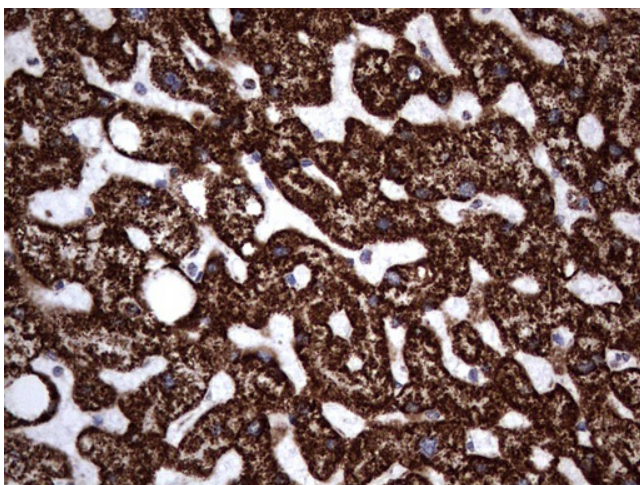
E.coli lysate (left lane) and E.coli lysate expressing Human recombinant protein fragment (right lane) corresponding to amino acids 286-610 of human PIK3CD (NP_005017).



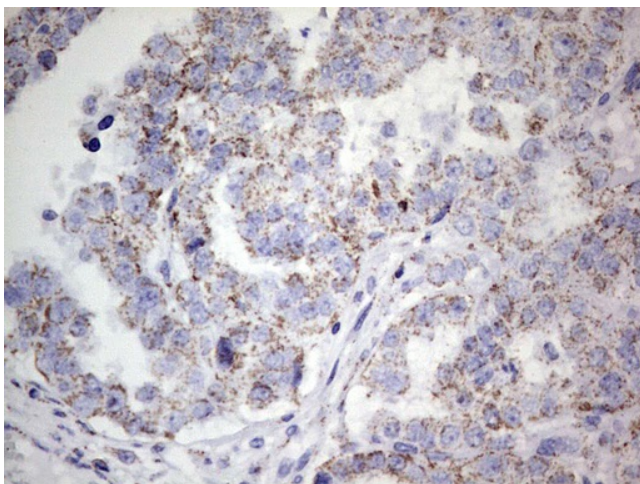
Immunohistochemical staining of paraffin-embedded Adenocarcinoma of Human colon tissue using anti-PIK3CD mouse monoclonal antibody. (Heat-induced epitope retrieval by 1 mM EDTA in 10mM Tris, pH8.5, 120°C for 3min, TA801891)



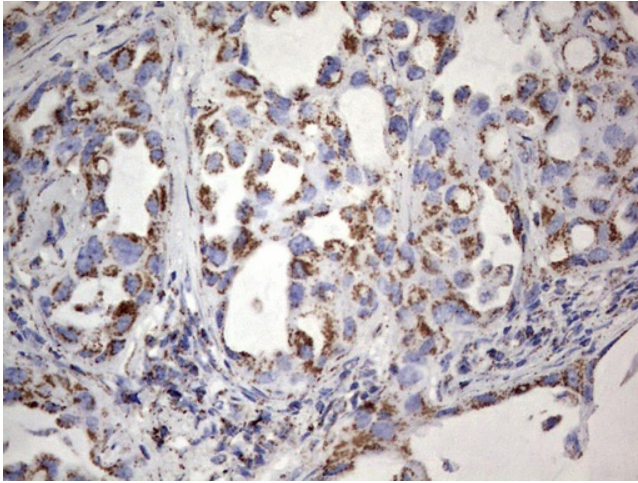
Immunohistochemical staining of paraffin-embedded Human Kidney tissue within the normal limits using anti-PIK3CD mouse monoclonal antibody. (Heat-induced epitope retrieval by 1 mM EDTA in 10mM Tris, pH8.5, 120°C for 3min, TA801891)



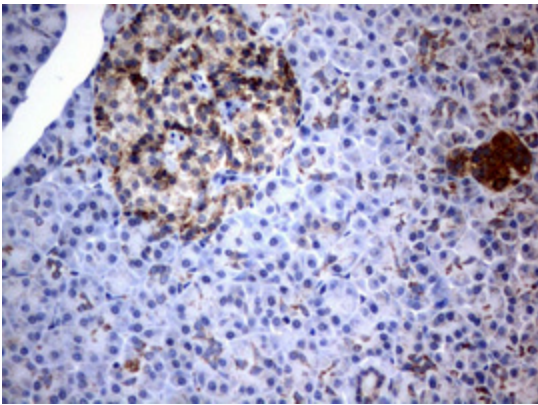
Immunohistochemical staining of paraffin-embedded Human liver tissue within the normal limits using anti-PIK3CD mouse monoclonal antibody. (Heat-induced epitope retrieval by 1 mM EDTA in 10mM Tris, pH8.5, 120°C for 3min, TA801891)



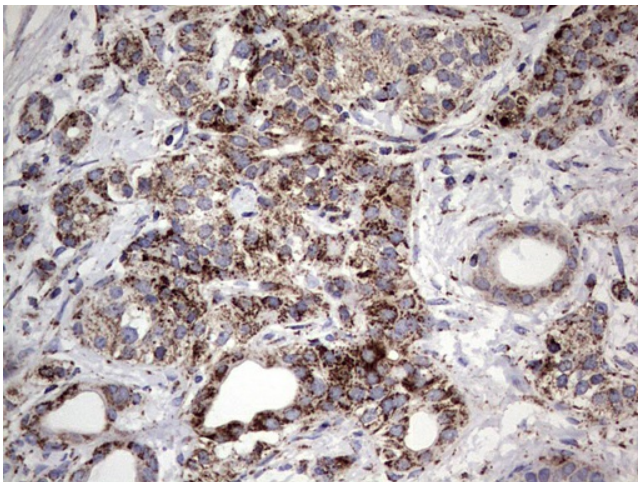
Immunohistochemical staining of paraffin-embedded Carcinoma of Human liver tissue using anti-PIK3CD mouse monoclonal antibody. (Heat-induced epitope retrieval by 1 mM EDTA in 10mM Tris, pH8.5, 120°C for 3min, TA801891)



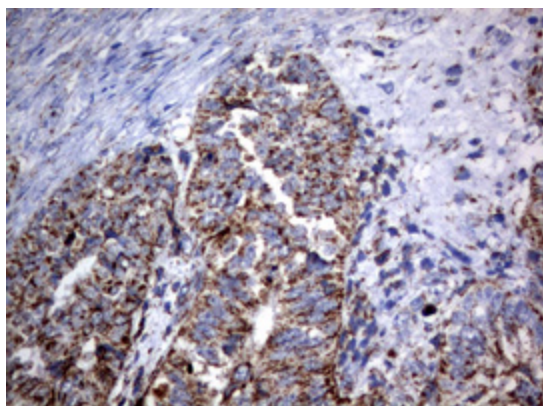
Immunohistochemical staining of paraffin-embedded Carcinoma of Human lung tissue using anti-PIK3CD mouse monoclonal antibody. (Heat-induced epitope retrieval by 1 mM EDTA in 10mM Tris, pH8.5, 120°C for 3min, TA801891)



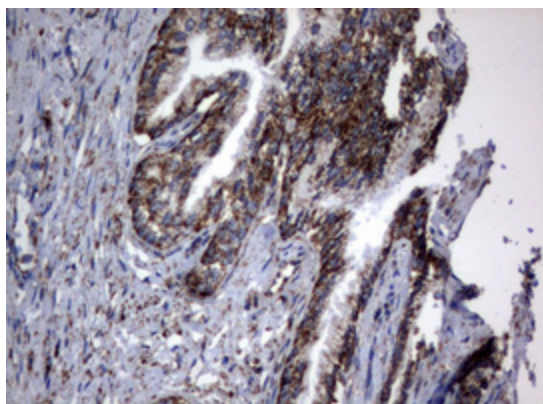
Immunohistochemical staining of paraffin-embedded Human pancreas tissue within the normal limits using anti-PIK3CD mouse monoclonal antibody. (Heat-induced epitope retrieval by 1 mM EDTA in 10mM Tris, pH8.5, 120°C for 3min, TA801891)



Immunohistochemical staining of paraffin-embedded Carcinoma of Human pancreas tissue using anti-PIK3CD mouse monoclonal antibody. (Heat-induced epitope retrieval by 1 mM EDTA in 10mM Tris, pH8.5, 120°C for 3min, TA801891)



Immunohistochemical staining of paraffin-embedded Adenocarcinoma of Human endometrium tissue using anti-PIK3CD mouse monoclonal antibody. (Heat-induced epitope retrieval by 1 mM EDTA in 10mM Tris, pH8.5, 120°C for 3min, TA801891)



Immunohistochemical staining of paraffin-embedded Carcinoma of Human prostate tissue using anti-PIK3CD mouse monoclonal antibody. (Heat-induced epitope retrieval by 1 mM EDTA in 10mM Tris, pH8.5, 120°C for 3min, TA801891)