

## Product datasheet for **TA801865M**

### WNT3 Mouse Monoclonal Antibody [Clone ID: OTI2D4]

#### Product data:

|                       |   |
|-----------------------|---|
| Product Type:         | Primary Antibodies  |
| Clone Name:           | OTI2D4  |
| Applications:         | WB  |
| Recommended Dilution: | WB 1:500  |
| Reactivity:           | Human, Mouse, Rat   |
| Host:                 | Mouse   |
| Isotype:              | IgG1  |
| Clonality:            | Monoclonal  |
| Immunogen:            | Human recombinant protein fragment corresponding to amino acids 128-355 of human WNT3 (NP_110380) produced in E.coli.   |
| Formulation:          | PBS (pH 7.3) containing 1% BSA, 50% glycerol and 0.02% sodium azide.  |
| Concentration:        | 1 mg/ml   |
| Purification:         | Purified from mouse ascites fluids or tissue culture supernatant by affinity chromatography (protein A/G)   |
| Conjugation:          | Unconjugated  |
| Storage:              | Store at -20°C as received.   |
| Stability:            | Stable for 12 months from date of receipt.  |
| Gene Name:            | Wnt family member 3   |
| Database Link:        | <a href="#">NP_110380</a><br><a href="#">Entrez Gene 22415 Mouse</a> <a href="#">Entrez Gene 24882 Rat</a> <a href="#">Entrez Gene 7473 Human</a><br><a href="#">P56703</a> |



[View online »](#)

**Background:**

The WNT gene family consists of structurally related genes which encode secreted signaling proteins. These proteins have been implicated in oncogenesis and in several developmental processes, including regulation of cell fate and patterning during embryogenesis. This gene is a member of the WNT gene family. It encodes a protein which shows 98% amino acid identity to mouse Wnt3 protein, and 84% to human WNT3A protein, another WNT gene product. The mouse studies show the requirement of Wnt3 in primary axis formation in the mouse. Studies of the gene expression suggest that this gene may play a key role in some cases of human breast, rectal, lung, and gastric cancer through activation of the WNT-beta-catenin-TCF signaling pathway. This gene is clustered with WNT15, another family member, in the chromosome 17q21 region. [provided by RefSeq, Jul 2008]

**Synonyms:**

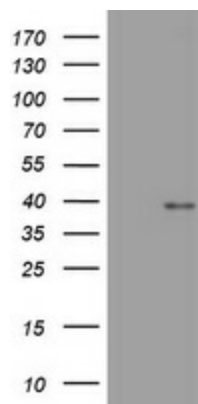
INT4; TETAMS

**Protein Families:**

Druggable Genome, Secreted Protein, Transmembrane

**Protein Pathways:**

Basal cell carcinoma, Hedgehog signaling pathway, Melanogenesis, Pathways in cancer, Wnt signaling pathway

**Product images:**


HEK293T cells were transfected with the pCMV6-ENTRY control (Left lane) or pCMV6-ENTRY WNT3 ([RC211115], Right lane) cDNA for 48 hrs and lysed. Equivalent amounts of cell lysates (5 ug per lane) were separated by SDS-PAGE and immunoblotted with anti-WNT3. Positive lysates [LY403082] (100ug) and [LC403082] (20ug) can be purchased separately from OriGene.