

## Product datasheet for **TA801830BM**

### CD23 (FCER2) Mouse Monoclonal Antibody (HRP conjugated) [Clone ID: OTI9B6]

#### Product data:

Product Type:	Primary Antibodies
Clone Name:	OTI9B6
Applications:	FC, WB
Recommended Dilution:	WB 1:2000
Reactivity:	Human
Host:	Mouse
Isotype:	IgG2b
Clonality:	Monoclonal
Immunogen:	Human recombinant protein fragment corresponding to amino acids 48-321 of human FCER2 (NP_001993) produced in SF9 cell.
Formulation:	PBS (pH 7.3) containing 1% BSA, 50% glycerol.
Concentration:	0.5 mg/ml
Purification:	Purified from mouse ascites fluids or tissue culture supernatant by affinity chromatography (protein A/G)
Conjugation:	HRP
Storage:	Store at -20°C as received.
Stability:	Stable for 12 months from date of receipt.
Predicted Protein Size:	36.3 kDa
Gene Name:	Fc fragment of IgE receptor II
Database Link:	<a href="#">NP_001993</a> <a href="#">Entrez Gene 2208 Human</a> <a href="#">P06734</a>
Background:	The protein encoded by this gene is a B-cell specific antigen, and a low-affinity receptor for IgE. It has essential roles in B cell growth and differentiation, and the regulation of IgE production. This protein also exists as a soluble secreted form, then functioning as a potent mitogenic growth factor. Alternatively spliced transcript variants encoding different isoforms have been described for this gene. [provided by RefSeq, Jul



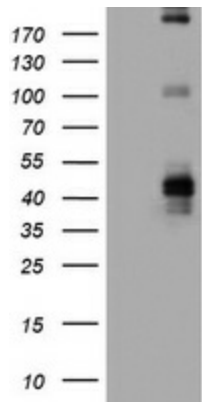
[View online »](#)

**Synonyms:** BLAST-2; CD23; CD23A; CLEC4J; FCE2; IGEBF

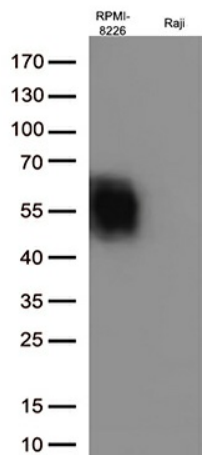
**Protein Families:** Secreted Protein, Transmembrane

**Protein Pathways:** Hematopoietic cell lineage

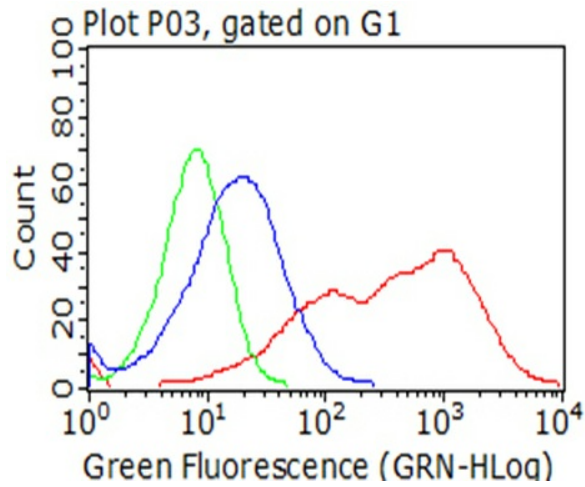
**Product images:**



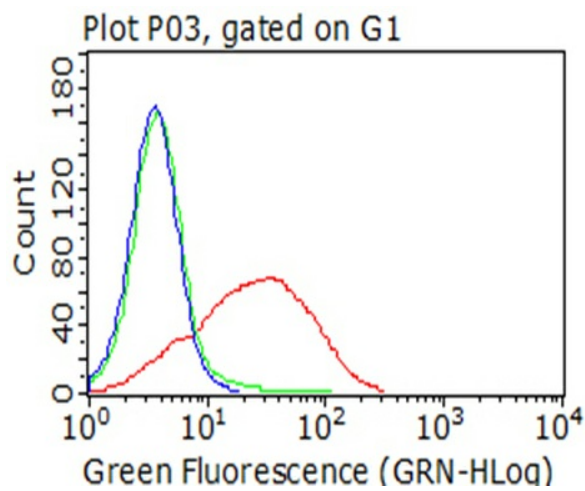
HEK293T cells were transfected with the pCMV6-ENTRY control (Left lane) or pCMV6-ENTRY FCER2 ([RC204335], Right lane) cDNA for 48 hrs and lysed. Equivalent amounts of cell lysates (5 ug per lane) were separated by SDS-PAGE and immunoblotted with anti-FCER2 (1:2000).



Western blot analysis of extracts (35ug) from 2 cell lines lysates by using anti-FCER2 monoclonal antibody (1:500).



Flow cytometric analysis of living 293T cells transfected with FCER2 overexpression plasmid ([RC204335], Red)/empty vector ([PS100001], Blue) using anti-FCER2 antibody ([TA801830]). Cells incubated with a non-specific antibody (Green) were used as isotype control (1:100).



Flow cytometric analysis of living RPMI-8226 cells, using anti-FCER2 antibody ([TA801830], Red), compared to an isotype control (green), and a PBS control (blue) (1:100).