

## Product datasheet for **TA801828**

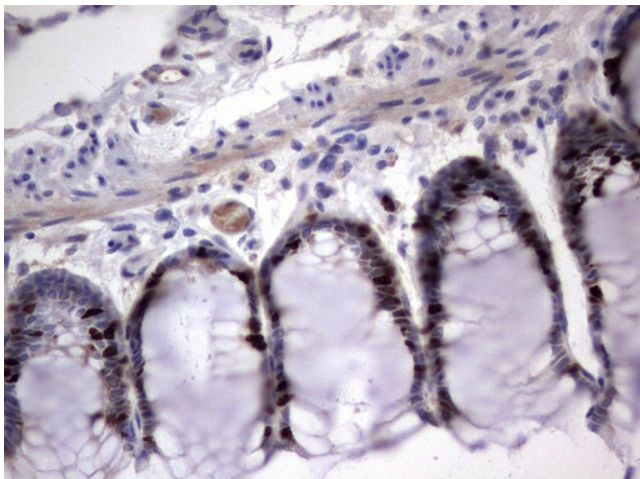
### **Ki67 (MKI67) Rat Monoclonal Antibody [Clone ID: OTI1D9]**

#### **Product data:**

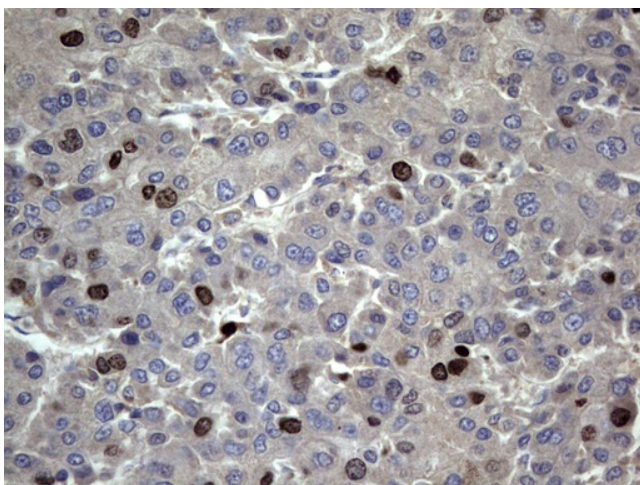
|                       |  |
|-----------------------|--|
| Product Type:         | Primary Antibodies   |
| Clone Name:           | OTI1D9   |
| Applications:         | IHC  |
| Recommended Dilution: | IHC 1:150  |
| Reactivity:           | Human  |
| Host:                 | Rat  |
| Isotype:              | IgG2a  |
| Clonality:            | Monoclonal   |
| Immunogen:            | Human recombinant protein fragment corresponding to amino acids 1160-1493 of human MKI67 (NP_002408) produced in E.coli. |
| Formulation:          | PBS (pH 7.3) containing 1% BSA, 50% glycerol and 0.02% sodium azide.   |
| Concentration:        | 1 mg/ml  |
| Purification:         | Purified from mouse ascites fluids or tissue culture supernatant by affinity chromatography (protein A/G)                |
| Conjugation:          | Unconjugated   |
| Storage:              | Store at -20°C as received.  |
| Stability:            | Stable for 12 months from date of receipt.   |
| Gene Name:            | marker of proliferation Ki-67  |
| Database Link:        | <a href="#">NP_002408</a><br><a href="#">Entrez Gene 4288 Human</a><br><a href="#">P46013</a>                            |
| Synonyms:             | KIA; MIB-; MIB-1; PPP1R105   |
| Protein Families:     | Druggable Genome, ES Cell Differentiation/IPS  |



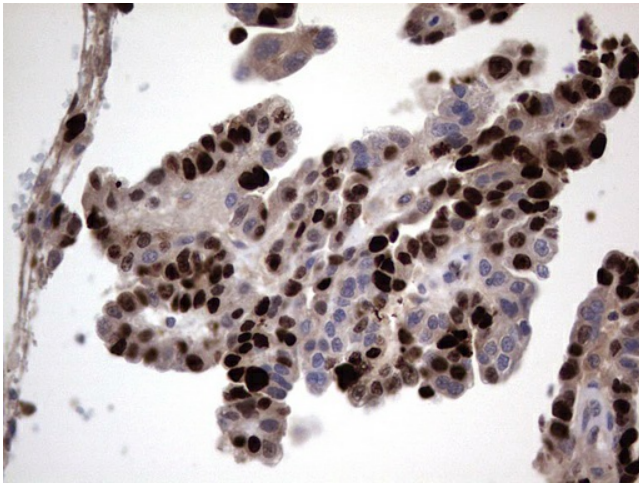
[View online »](#)

**Product images:**

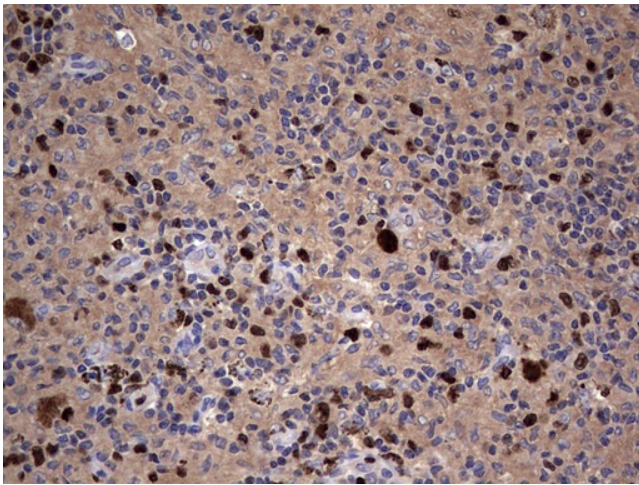
Immunohistochemical staining of paraffin-embedded Human colon tissue within the normal limits using anti-MKI67 rat monoclonal antibody. (TA801828; heat-induced epitope retrieval by 1mM EDTA in 10mM Tris, pH8.5, 120°C for 3min)



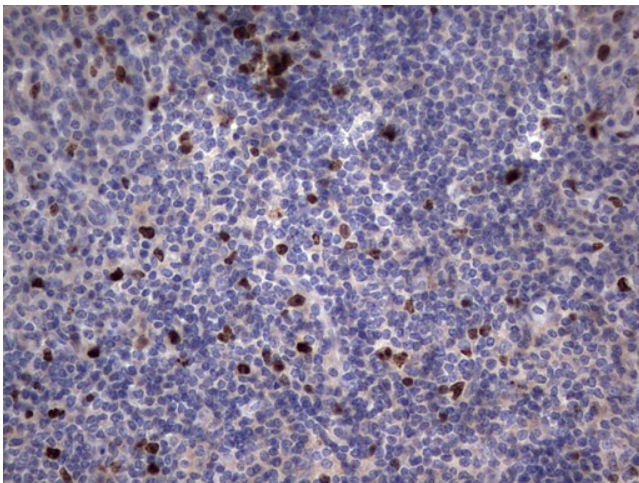
Immunohistochemical staining of paraffin-embedded Carcinoma of Human liver tissue using anti-MKI67 rat monoclonal antibody. (TA801828; heat-induced epitope retrieval by 1mM EDTA in 10mM Tris, pH8.5, 120°C for 3min)



Immunohistochemical staining of paraffin-embedded Adenocarcinoma of Human ovary tissue using anti-MKI67 rat monoclonal antibody. (TA801828; heat-induced epitope retrieval by 1mM EDTA in 10mM Tris, pH8.5, 120°C for 3min)



Immunohistochemical staining of paraffin-embedded Human lymph node tissue within the normal limits using anti-MKI67 rat monoclonal antibody. (TA801828; heat-induced epitope retrieval by 1mM EDTA in 10mM Tris, pH8.5, 120°C for 3min)



Immunohistochemical staining of paraffin-embedded Human tonsil within the normal limits using anti-MKI67 rat monoclonal antibody. (TA801828; heat-induced epitope retrieval by 1mM EDTA in 10mM Tris, pH8.5, 120°C for 3min)