

Product datasheet for **TA801775AM**

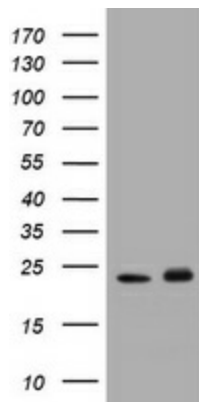
GST3 (GSTP1) Mouse Monoclonal Antibody (Biotin conjugated) [Clone ID: OTI4B6]

Product data:

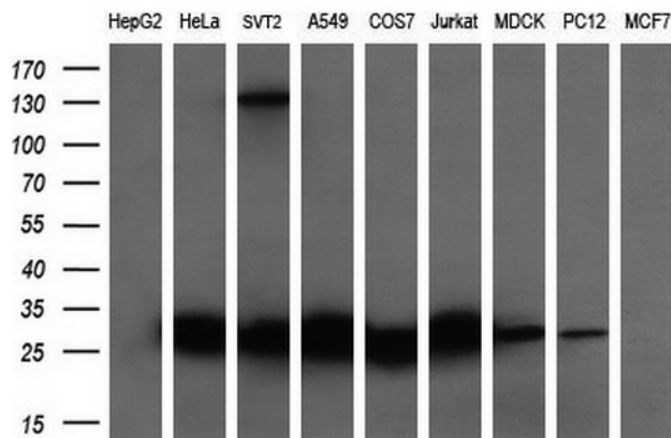
Product Type:	Primary Antibodies
Clone Name:	OTI4B6
Applications:	IHC, WB
Recommended Dilution:	WB 1:2000, IHC 1:150
Reactivity:	Human, Mouse, Rat
Host:	Mouse
Isotype:	IgG2b
Clonality:	Monoclonal
Immunogen:	Full length human recombinant protein of human GSTP1 (NP_000843) produced in E.coli.
Formulation:	PBS (pH 7.3) containing 1% BSA, 50% glycerol and 0.02% sodium azide.
Concentration:	0.5 mg/ml
Purification:	Purified from mouse ascites fluids or tissue culture supernatant by affinity chromatography (protein A/G)
Conjugation:	Biotin
Storage:	Store at -20°C as received.
Stability:	Stable for 12 months from date of receipt.
Gene Name:	glutathione S-transferase pi 1
Database Link:	NP_000843 Entrez Gene 14870 Mouse Entrez Gene 24426 Rat Entrez Gene 2950 Human P09211
Synonyms:	DFN7; FAEES3; GST3; GSTP; HEL-S-22; PI
Protein Families:	Druggable Genome
Protein Pathways:	Drug metabolism - cytochrome P450, Glutathione metabolism, Metabolism of xenobiotics by cytochrome P450, Pathways in cancer, Prostate cancer



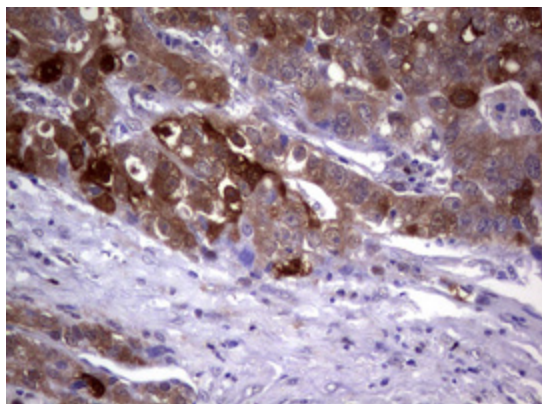
[View online »](#)

Product images:


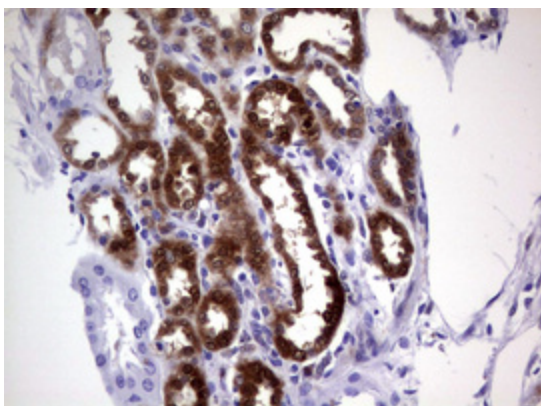
HEK293T cells were transfected with the pCMV6-ENTRY control (Cat# [PS100001], Left lane) or pCMV6-ENTRY GSTP1 (Cat# [RC203086], Right lane) cDNA for 48 hrs and lysed. Equivalent amounts of cell lysates (5 ug per lane) were separated by SDS-PAGE and immunoblotted with anti-GSTP1 (Cat# [TA801775]). Positive lysates [LY400300] (100ug) and [LC400300] (20ug) can be purchased separately from OriGene.



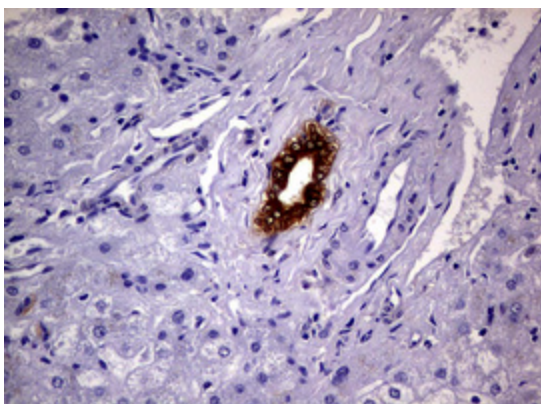
Western blot analysis of extracts (35ug) from 9 different cell lines by using anti-GSTP1 monoclonal antibody (HepG2: human; HeLa: human; SVT2: mouse; A549: human; COS7: monkey; Jurkat: human; MDCK: canine; PC12: rat; MCF7: human) (1:200).



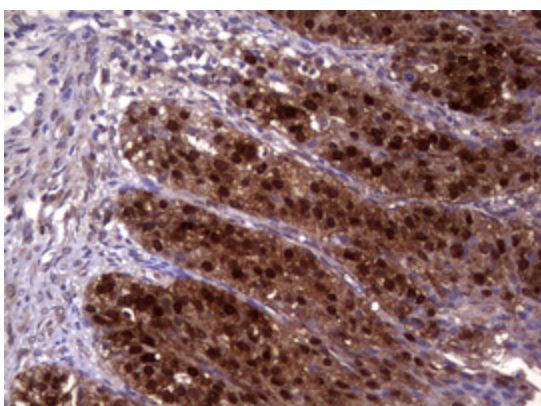
Immunohistochemical staining of paraffin-embedded Adenocarcinoma of Human colon tissue using anti-GSTP1 mouse monoclonal antibody. (Heat-induced epitope retrieval by 10mM citric buffer, pH6.0, 120°C for 3min, [TA801775])



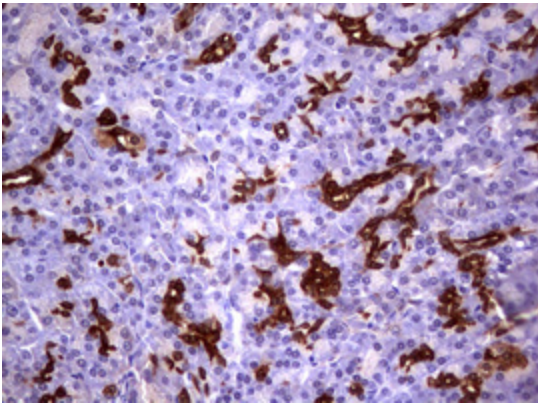
Immunohistochemical staining of paraffin-embedded Human Kidney tissue within the normal limits using anti-GSTP1 mouse monoclonal antibody. (Heat-induced epitope retrieval by 10mM citric buffer, pH6.0, 120°C for 3min, [TA801775])



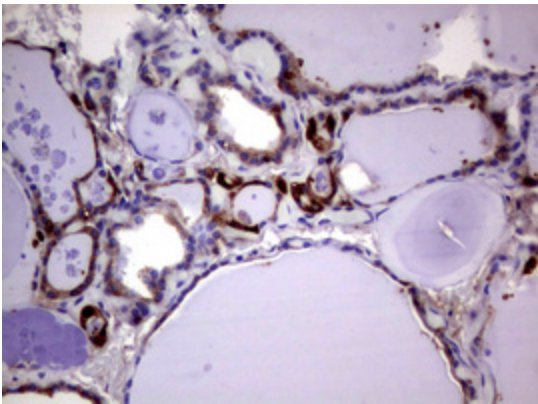
Immunohistochemical staining of paraffin-embedded Human liver tissue within the normal limits using anti-GSTP1 mouse monoclonal antibody. (Heat-induced epitope retrieval by 10mM citric buffer, pH6.0, 120°C for 3min, [TA801775])



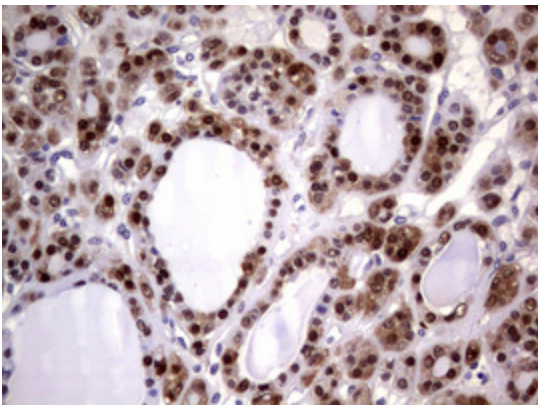
Immunohistochemical staining of paraffin-embedded Adenocarcinoma of Human ovary tissue using anti-GSTP1 mouse monoclonal antibody. (Heat-induced epitope retrieval by 10mM citric buffer, pH6.0, 120°C for 3min, [TA801775])



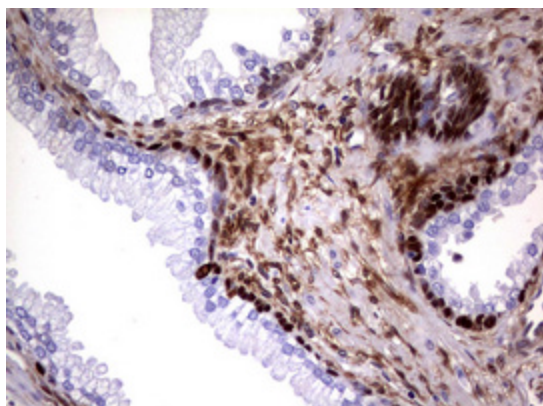
Immunohistochemical staining of paraffin-embedded Human pancreas tissue within the normal limits using anti-GSTP1 mouse monoclonal antibody. (Heat-induced epitope retrieval by 10mM citric buffer, pH6.0, 120°C for 3min, [TA801775])



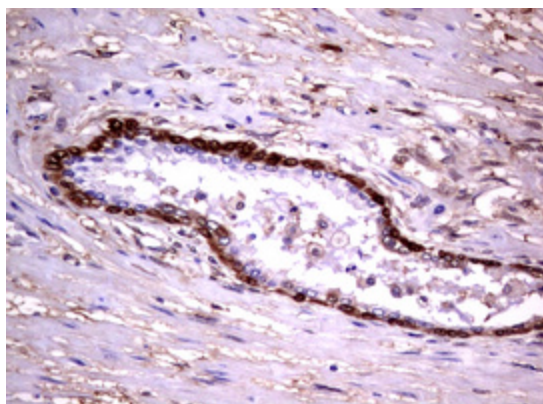
Immunohistochemical staining of paraffin-embedded Human thyroid tissue within the normal limits using anti-GSTP1 mouse monoclonal antibody. (Heat-induced epitope retrieval by 10mM citric buffer, pH6.0, 120°C for 3min, [TA801775])



Immunohistochemical staining of paraffin-embedded Carcinoma of Human thyroid tissue using anti-GSTP1 mouse monoclonal antibody. (Heat-induced epitope retrieval by 10mM citric buffer, pH6.0, 120°C for 3min, [TA801775])



Immunohistochemical staining of paraffin-embedded Human prostate tissue within the normal limits using anti-GSTP1 mouse monoclonal antibody. (Heat-induced epitope retrieval by 10mM citric buffer, pH6.0, 120°C for 3min, [TA801775])



Immunohistochemical staining of paraffin-embedded Carcinoma of Human prostate tissue using anti-GSTP1 mouse monoclonal antibody. (Heat-induced epitope retrieval by 10mM citric buffer, pH6.0, 120°C for 3min, [TA801775])