

## Product datasheet for **TA801749AM**

### **HIF 2 alpha (EPAS1) Mouse Monoclonal Antibody (Biotin conjugated) [Clone ID: OTI2A6]**

#### **Product data:**

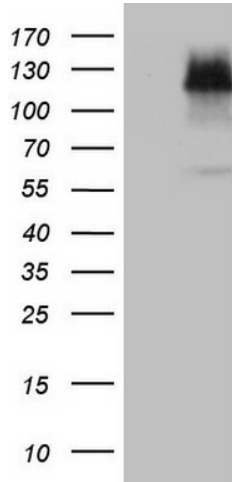
<b>Product Type:</b>	Primary Antibodies
<b>Clone Name:</b>	OTI2A6
<b>Applications:</b>	IHC, WB
<b>Recommended Dilution:</b>	WB 1:2000, IHC 1:150
<b>Reactivity:</b>	Human, Mouse, Rat
<b>Host:</b>	Mouse
<b>Isotype:</b>	IgG1
<b>Clonality:</b>	Monoclonal
<b>Immunogen:</b>	Human recombinant protein fragment corresponding to amino acids 584-870 of human EPAS1 (NP_001421) produced in E.coli.
<b>Formulation:</b>	PBS (pH 7.3) containing 1% BSA, 50% glycerol and 0.02% sodium azide.
<b>Concentration:</b>	0.5 mg/ml
<b>Purification:</b>	Purified from mouse ascites fluids or tissue culture supernatant by affinity chromatography (protein A/G)
<b>Conjugation:</b>	Biotin
<b>Storage:</b>	Store at -20°C as received.
<b>Stability:</b>	Stable for 12 months from date of receipt.
<b>Predicted Protein Size:</b>	96.3 kDa
<b>Gene Name:</b>	endothelial PAS domain protein 1
<b>Database Link:</b>	<a href="#">NP_001421</a> <a href="#">Entrez Gene 13819 Mouse</a> <a href="#">Entrez Gene 29452 Rat</a> <a href="#">Entrez Gene 2034 Human</a> <a href="#">Q99814</a>
<b>Background:</b>	This gene encodes a transcription factor involved in the induction of genes regulated by oxygen, which is induced as oxygen levels fall. The encoded protein contains a basic-helix-loop-helix domain protein dimerization domain as well as a domain found in proteins in signal transduction pathways which respond to oxygen levels. Mutations in this gene are associated with erythrocytosis familial type 4. [provided by RefSeq, Nov 2009]



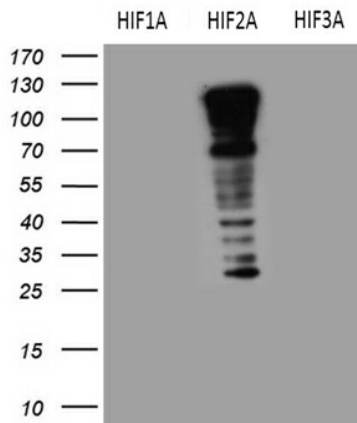
[View online »](#)

**Synonyms:** bHLHe73; ECTY4; HIF2A; HLF; MOP2; PASD2  
**Protein Families:** Druggable Genome, Transcription Factors  
**Protein Pathways:** Pathways in cancer, Renal cell carcinoma

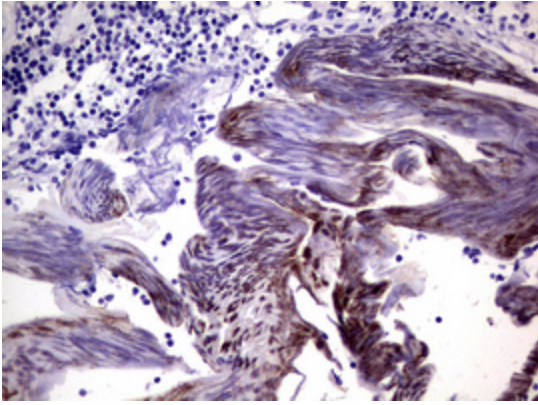
**Product images:**



HEK293T cells were transfected with the pCMV6-ENTRY control (Left lane) or pCMV6-ENTRY EPAS1 ([RC208604], Right lane) cDNA for 48 hrs and lysed. Equivalent amounts of cell lysates (5 ug per lane) were separated by SDS-PAGE and immunoblotted with anti-EPAS1 (1:2000). Positive lysates [LY400555] (100ug) and [LC400555] (20ug) can be purchased separately from OriGene.



HEK293T cells were transfected with the pCMV6-HIF1A ([RC202461]), pCMV6-EPAS1 ([RC208604]) and pCMV6-HIF3A ([RC210255]) (1:2000).



Immunohistochemical staining of paraffin-embedded Human lymph node tissue within the normal limits using anti-EPAS1 mouse monoclonal antibody. ([TA801749])