

Product datasheet for **TA801749**

HIF 2 alpha (EPAS1) Mouse Monoclonal Antibody [Clone ID: OTI2A6]

Product data:

Product Type:	Primary Antibodies
Clone Name:	OTI2A6
Applications:	IHC, WB
Recommended Dilution:	WB 1:2000, IHC 1:150
Reactivity:	Human, Mouse, Rat
Host:	Mouse
Isotype:	IgG1
Clonality:	Monoclonal
Immunogen:	Human recombinant protein fragment corresponding to amino acids 584-870 of human EPAS1 (NP_001421) produced in E.coli.
Formulation:	PBS (pH 7.3) containing 1% BSA, 50% glycerol and 0.02% sodium azide.
Concentration:	1 mg/ml
Purification:	Purified from mouse ascites fluids or tissue culture supernatant by affinity chromatography (protein A/G)
Conjugation:	Unconjugated
Storage:	Store at -20°C as received.
Stability:	Stable for 12 months from date of receipt.
Predicted Protein Size:	96.3 kDa
Gene Name:	endothelial PAS domain protein 1
Database Link:	NP_001421 Entrez Gene 13819 Mouse Entrez Gene 29452 Rat Entrez Gene 2034 Human Q99814
Background:	This gene encodes a transcription factor involved in the induction of genes regulated by oxygen, which is induced as oxygen levels fall. The encoded protein contains a basic-helix-loop-helix domain protein dimerization domain as well as a domain found in proteins in signal transduction pathways which respond to oxygen levels. Mutations in this gene are associated with erythrocytosis familial type 4. [provided by RefSeq, Nov 2009]



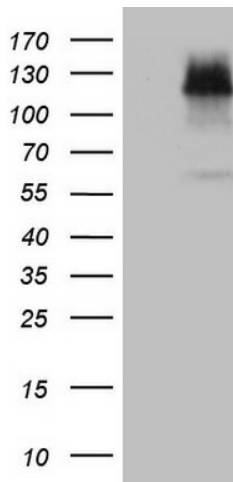
[View online »](#)

Synonyms: bHLHe73; ECTY4; HIF2A; HLF; MOP2; PASD2

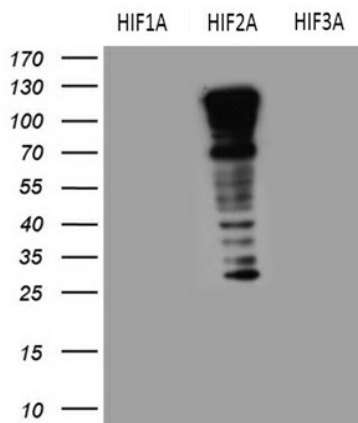
Protein Families: Druggable Genome, Transcription Factors

Protein Pathways: Pathways in cancer, Renal cell carcinoma

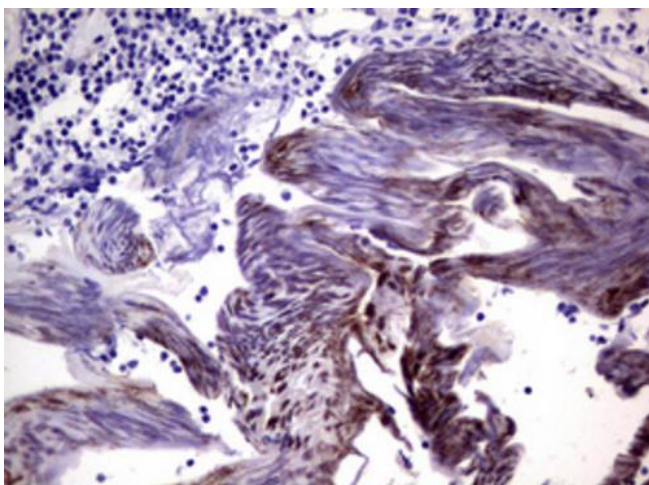
Product images:



HEK293T cells were transfected with the pCMV6-ENTRY control (Left lane) or pCMV6-ENTRY EPAS1 ([RC208604], Right lane) cDNA for 48 hrs and lysed. Equivalent amounts of cell lysates (5 ug per lane) were separated by SDS-PAGE and immunoblotted with anti-EPAS1 (1:2000). Positive lysates [LY400555] (100ug) and [LC400555] (20ug) can be purchased separately from OriGene.



HEK293T cells were transfected with the pCMV6-HIF1A ([RC202461]), pCMV6-EPAS1 ([RC208604]) and pCMV6-HIF3A ([RC210255]) (1:2000).



Immunohistochemical staining of paraffin-embedded Human lymph node tissue within the normal limits using anti-EPAS1 mouse monoclonal antibody. (TA801749). Heat-induced epitope retrieval by EDTA solution buffer pH 8.0 at 120°C for 3 min.