

Product datasheet for **TA801746**

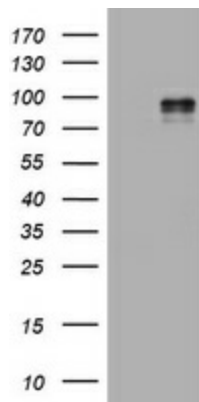
HIF 2 alpha (EPAS1) Mouse Monoclonal Antibody [Clone ID: OTI2G5]

Product data:

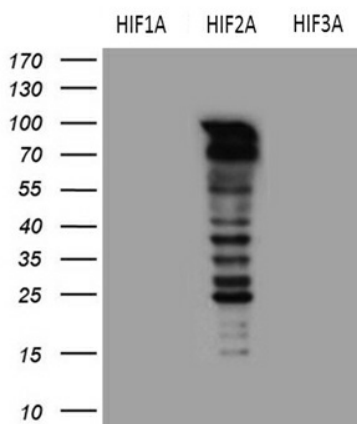
| | |
|-------------------------|---|
| Product Type: | Primary Antibodies |
| Clone Name: | OTI2G5 |
| Applications: | WB |
| Recommended Dilution: | WB 1:2000 |
| Reactivity: | Human, Mouse, Rat |
| Host: | Mouse |
| Isotype: | IgG1 |
| Clonality: | Monoclonal |
| Immunogen: | Human recombinant protein fragment corresponding to amino acids 584-870 of human EPAS1 (NP_001421) produced in E.coli. |
| Formulation: | PBS (PH 7.3) containing 1% BSA, 50% glycerol and 0.02% sodium azide. |
| Concentration: | 1 mg/ml |
| Purification: | Purified from mouse ascites fluids or tissue culture supernatant by affinity chromatography (protein A/G) |
| Conjugation: | Unconjugated |
| Storage: | Store at -20°C as received. |
| Stability: | Stable for 12 months from date of receipt. |
| Predicted Protein Size: | 96.3 kDa |
| Gene Name: | endothelial PAS domain protein 1 |
| Database Link: | NP_001421 Entrez Gene 13819 Mouse Entrez Gene 29452 Rat Entrez Gene 2034 Human Q99814 |
| Synonyms: | bHLHe73; ECYT4; HIF2A; HLF; MOP2; PASD2 |
| Protein Families: | Druggable Genome, Transcription Factors |
| Protein Pathways: | Pathways in cancer, Renal cell carcinoma |



[View online »](#)

Product images:


HEK293T cells were transfected with the pCMV6-ENTRY control (Cat# [PS100001], Left lane) or pCMV6-ENTRY EPAS1 (Cat# [RC208604], Right lane) cDNA for 48 hrs and lysed. Equivalent amounts of cell lysates (5 ug per lane) were separated by SDS-PAGE and immunoblotted with anti-EPAS1 (Cat# TA801746). Positive lysates [LY400555] (100ug) and [LC400555] (20ug) can be purchased separately from OriGene.



HEK293T cells were transfected with the pCMV6-HIF1A (Cat# [RC202461]), pCMV6-EPAS1 (Cat# [RC208604]) and pCMV6-HIF3A (Cat# [RC210255]) (1:2000).