

## Product datasheet for **TA801741**

### CD30 (TNFRSF8) Mouse Monoclonal Antibody [Clone ID: OTI4B3]

#### Product data:

Product Type:	Primary Antibodies
Clone Name:	OTI4B3
Applications:	FC, WB
Recommended Dilution:	WB 1:2000, FLOW 1:100
Reactivity:	Human
Host:	Mouse
Isotype:	IgG1
Clonality:	Monoclonal
Immunogen:	Human recombinant protein fragment corresponding to amino acids 19-379 of human TNFRSF8 (NP_001234) produced in E.coli.
Formulation:	PBS (pH 7.3) containing 1% BSA, 50% glycerol and 0.02% sodium azide.
Concentration:	1 mg/ml
Purification:	Purified from mouse ascites fluids or tissue culture supernatant by affinity chromatography (protein A/G)
Conjugation:	Unconjugated
Storage:	Store at -20°C as received.
Stability:	Stable for 12 months from date of receipt.
Predicted Protein Size:	61.9 kDa
Gene Name:	tumor necrosis factor receptor superfamily member 8
Database Link:	<a href="#">NP_001234</a> <a href="#">Entrez Gene 943 Human</a> <a href="#">P28908</a>



[View online »](#)

**Background:**

The protein encoded by this gene is a member of the TNF-receptor superfamily. This receptor is expressed by activated, but not by resting, T and B cells. TRAF2 and TRAF5 can interact with this receptor, and mediate the signal transduction that leads to the activation of NF-kappaB. This receptor is a positive regulator of apoptosis, and also has been shown to limit the proliferative potential of autoreactive CD8 effector T cells and protect the body against autoimmunity. Two alternatively spliced transcript variants of this gene encoding distinct isoforms have been reported. [provided by RefSeq, Jul 2008]

**Synonyms:**

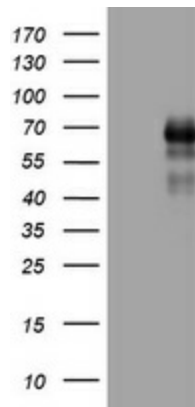
CD30; D1S166E; Ki-1

**Protein Families:**

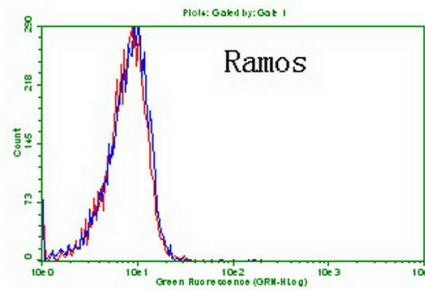
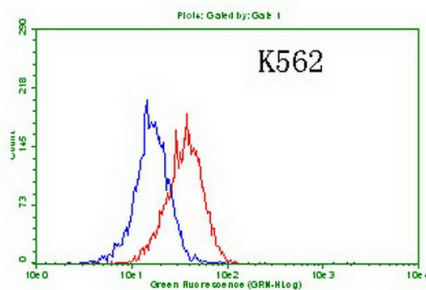
Druggable Genome, ES Cell Differentiation/IPS, Stem cell - Pluripotency, Transmembrane

**Protein Pathways:**

Cytokine-cytokine receptor interaction

**Product images:**


HEK293T cells were transfected with the pCMV6-ENTRY control (Left lane) or pCMV6-ENTRY TNFRSF8 ([RC219819], Right lane) cDNA for 48 hrs and lysed. Equivalent amounts of cell lysates (5 ug per lane) were separated by SDS-PAGE and immunoblotted with anti-TNFRSF8. Positive lysates [LY420050] (100ug) and [LC420050] (20ug) can be purchased separately from OriGene.



Flow cytometric Analysis of K562 and Ramos cells, using anti-TNFRSF8 antibody (TA801741), (Red), compared to a nonspecific negative control antibody (TA50011), (Blue) (1:100).