

## Product datasheet for **TA801667BM**

### Neuraminidase (NEU1) Mouse Monoclonal Antibody (HRP conjugated) [Clone ID: OTI3H2]

#### Product data:

Product Type:	Primary Antibodies
Clone Name:	OTI3H2
Applications:	WB
Recommended Dilution:	WB 1:2000
Reactivity:	Human
Host:	Mouse
Isotype:	IgG1
Clonality:	Monoclonal
Immunogen:	Human recombinant protein fragment corresponding to amino acids 48-315 of human NEU1 (NP_000425) produced in E.coli.
Formulation:	PBS (pH 7.3) containing 1% BSA, 50% glycerol.
Concentration:	0.5 mg/ml
Purification:	Purified from mouse ascites fluids or tissue culture supernatant by affinity chromatography (protein A/G)
Conjugation:	HRP
Storage:	Store at -20°C as received.
Stability:	Stable for 12 months from date of receipt.
Predicted Protein Size:	40.2 kDa
Gene Name:	neuraminidase 1 (lysosomal sialidase)
Database Link:	<a href="#">NP_000425</a> <a href="#">Entrez Gene 4758 Human</a> <a href="#">Q99519</a>



[View online »](#)

**Background:**

The protein encoded by this gene is a lysosomal enzyme that cleaves terminal sialic acid residues from substrates such as glycoproteins and glycolipids. In the lysosome, this enzyme is part of a heterotrimeric complex together with beta-galactosidase and cathepsin A (the latter is also referred to as 'protective protein'). Mutations in this gene can lead to sialidosis, a lysosomal storage disease that can be type 1 (cherry red spot-myoclonus syndrome or normosomatic type), which is late-onset, or type 2 (the dysmorphic type), which occurs at an earlier age with increased severity. [provided by RefSeq, Jul 2008]

**Synonyms:**

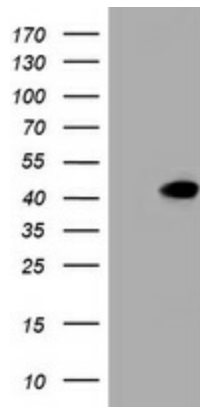
NANH; NEU; SIAL1

**Protein Families:**

Druggable Genome, Transmembrane

**Protein Pathways:**

Lysosome, Other glycan degradation, Sphingolipid metabolism

**Product images:**

HEK293T cells were transfected with the pCMV6-ENTRY control (Left lane) or pCMV6-ENTRY NEU1 ([RC200386], Right lane) cDNA for 48 hrs and lysed. Equivalent amounts of cell lysates (5 ug per lane) were separated by SDS-PAGE and immunoblotted with anti-NEU1. Positive lysates [LY424720] (100ug) and [LC424720] (20ug) can be purchased separately from OriGene.