

Product datasheet for **TA801655AM**

Cyclin D1 (CCND1) Mouse Monoclonal Antibody (Biotin conjugated) [Clone ID: OTI1G2]

Product data:

Product Type:	Primary Antibodies
Clone Name:	OTI1G2
Applications:	WB
Recommended Dilution:	WB 1:2000
Reactivity:	Human, Mouse, Rat
Host:	Mouse
Isotype:	IgG1
Clonality:	Monoclonal
Immunogen:	Full length human recombinant protein of human CCND1 (NP_444284) produced in E.coli.
Formulation:	PBS (pH 7.3) containing 1% BSA, 50% glycerol and 0.02% sodium azide.
Concentration:	0.5 mg/ml
Purification:	Purified from mouse ascites fluids or tissue culture supernatant by affinity chromatography (protein A/G)
Conjugation:	Biotin
Storage:	Store at -20°C as received.
Stability:	Stable for 12 months from date of receipt.
Gene Name:	cyclin D1
Database Link:	NP_444284 Entrez Gene 12443 Mouse Entrez Gene 58919 Rat Entrez Gene 595 Human P24385
Synonyms:	BCL1; D11S287E; PRAD1; U21B31
Protein Families:	Druggable Genome, Stem cell - Pluripotency, Stem cell relevant signaling - DSL/Notch pathway, Stem cell relevant signaling - JAK/STAT signaling pathway, Stem cell relevant signaling - Wnt Signaling pathway

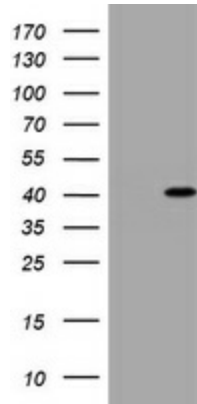


[View online »](#)

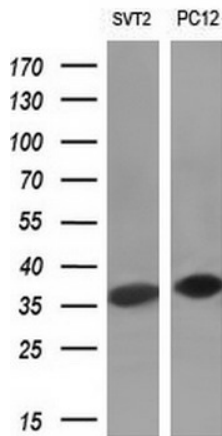
Protein Pathways:

Acute myeloid leukemia, Bladder cancer, Cell cycle, Chronic myeloid leukemia, Colorectal cancer, Endometrial cancer, Focal adhesion, Glioma, Jak-STAT signaling pathway, Melanoma, Non-small cell lung cancer, p53 signaling pathway, Pancreatic cancer, Pathways in cancer, Prostate cancer, Small cell lung cancer, Thyroid cancer, Viral myocarditis, Wnt signaling pathway

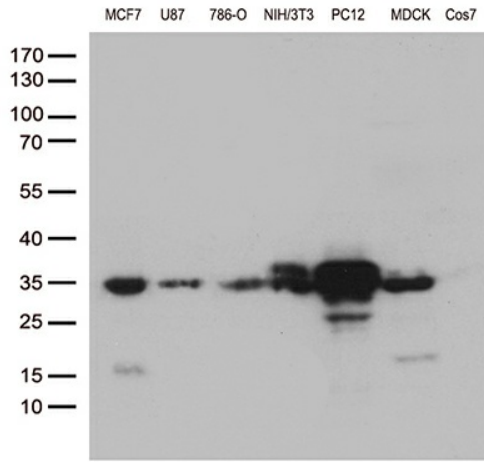
Product images:



HEK293T cells were transfected with the pCMV6-ENTRY control (Cat# [PS100001], Left lane) or pCMV6-ENTRY CCND1 (Cat# [RC204957], Right lane) cDNA for 48 hrs and lysed. Equivalent amounts of cell lysates (5 ug per lane) were separated by SDS-PAGE and immunoblotted with anti-CCND1 (Cat# [TA801655]). Positive lysates [LY403284] (100ug) and [LC403284] (20ug) can be purchased separately from OriGene.



Western blot analysis of extracts (10ug) from 2 different cell lines by using anti-CCND1 monoclonal antibody (1:200).



Western blot analysis of extracts (35ug) from 4 different cell lines by using anti-CCND1 monoclonal antibody. 1:500